

Bonnydale | Black Simmentals

27TH

ANNUAL BULL SALE

MONDAY 13th MARCH 2023, 1pm (WST)

OFFERING 85 BLACK SIMMENTAL & SIMANGUS BULLS



Bonnydale Roosevelt T98



*Stud cattle breeding
is not a destination,
it's a journey.*

WILLIE ALTENBURG



TWENTY-SEVENTH ON-PROPERTY BULL SALE

ACCOUNT: INTROVIGNE GRAZING CO
"BONNYDALE BLACK SIMMENTALS"
197 DeZotti Road, Bridgetown WA 6255

CONDUCTING AGENT



INTERFACED WITH



ENQUIRIES:

Mike & Julie Introvigne P 08 9764 4012 M 0428 644 012 E mjintro@bigpond.com

Rob & Diane Introvigne P 08 9764 4082 M 0427 644 082 E rdintro@bigpond.com



STAR BREEDER PROGRAM
GIVING CONFIDENCE TO BREEDERS AND BUYERS



Tim Spicer,
Elders Stud Stock Manager WA
0427 812 194



Nathan King,
Elders Stud Stock Auctioneer
0488 582 455



Deane Allen,
Elders Bunbury
0427 421 306



Michael Carroll,
Elders South West Cattle Manager
0427 975 620



Pearce Watling,
Elders Bridgetown
0437 844 528

Lot videos available on Auctionsplus and bonnydalesimmentals.com

bonnydalesimmentals.com



THE NEXT GENERATION HAS ARRIVED.



CYDECTIN[®] PLATINUM

DUAL ACTIVE LV POUR-ON FOR CATTLE

WITH DMI-Sorb™ TECHNOLOGY

- HIGHLY EFFECTIVE AGAINST SINGLE AND DUAL RESISTANT WORMS¹
- PERSISTENT ACTIVITY FOR REDUCED PASTURE CONTAMINATION FOR 21-35 DAYS¹
- 7 DAY MEAT WHP AND 20 DAY ESI OFFER OPTIMAL MARKET OPPORTUNITY
- DMI-Sorb™ TECHNOLOGY ENHANCES PENETRATION OF ACTIVES



Shaping the future of animal health

Virbac

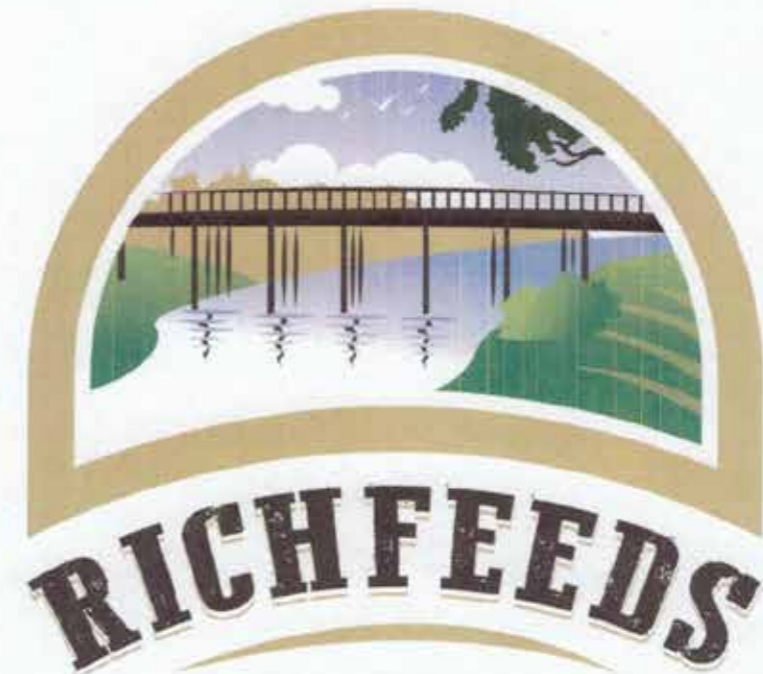
¹ Refer to registered label

RICHFEEDS AND RURAL SUPPLIERS

Your local agents in Bridgetown and surrounding areas for all your rural needs. Family owned and operated for over 25 years.

P: (08) 97 611520 E: richfeedsrural@westnet.com.au

- *Drench/Vaccine
- *Electric fencing
- *Water fittings
- *Water Tanks (Inc. FREE delivery)
- *Ag-Chem
- *Livestock Supplements
- *Stockfeed
- *Optima Lime
- *Pumps
- *CSBP Fertiliser
- *Southern Wire
- *Fire Fighting





GENUINE LEADERS IN SPECIALIST PROPERTY

National real estate agency and advisory firm, LAWD offers a service suite including specialist transaction, advisory and valuations for agriculture, water and land development.

The LAWD team has unparalleled property experience and market knowledge that can only be acquired with time.

As a tier-one firm offering a full suite of real estate services we can connect clients with the expertise they need to accelerate their success.

Contact us at lawd.com.au or call +61 8 6383 5399

NO SALE CREDIT POLICY

Bonnydale Black Simmentals continues its policy of not utilising sale credits, therefore prospective buyers at Bonnydale's Annual On-Property Bull Sale can bid with confidence and rest assured no one bidding at the sale has a credit inducement providing them with an unfair bidding advantage.

SALE DAY SAFETY DISCLAIMER

Please be advised when entering the pens people must be aware of the potential risk involved and enter at their own risk.

Children under the age of 16 are not permitted to enter the pens on sale day. Visitors must use common sense when entering the pens and be mindful of all the bulls in the pen and other visitors inspecting bulls.

While all care has been taken when selecting bulls for sale to ensure quiet temperament under normal handling circumstances they have not been accustomed to large numbers of people in their vicinity.

Bonnydale and Elders staff will be available on sale day to assist you when entering the pens or to move the bulls closer should you prefer to inspect the bulls from outside the pens.

LUNCH AND REFRESHMENTS

Inspections begin at 10.30am, complimentary morning tea is available.

A complimentary roast beef lunch and refreshments will be available from 12 noon prior to the sale start at 1.00pm WST.

Complimentary refreshments will follow the sales completion, we hope you will join us.

AGENTS REBATE

A 3% rebate will be paid to any outside agent who introduces new clients to the stud in writing to both the vendor and Elders 24 hours prior to the sale.

The agent must accompany and assist their client on sale day.

FREE DELIVERY AUSTRALIA WIDE

The vendors will provide free delivery, to all mainland states, for bulls purchased at auction.

In WA the vendors will deliver bulls as soon as possible after the sale to the purchaser's property.

Interstate deliveries will be undertaken by Quicksilver Transport to the buyer's property where possible or the nearest saleyard depending on the transport route.

BONNYDALE'S HERD PROTOCOLS

All bulls semen tested by Nutrien Breeding Services.

All bulls will have been ultrasound scanned by Max Bowman prior to sale.

All bulls carry the Zoetis Immune Ready protocol and tested negative for BVDV.

All bulls vaccinated with 7in1, Pestiguard, Vibrovax, Longrange (Botulism), Bovillus and Rhinoguard.

All bulls drenched with Cydectin Platinum on 8th February 2023.

Bulls destined for Queensland will be vaccinated free of charge for 3 Day Sickness and Tick Fever where required.

BULL GUARANTEE

All bulls are guaranteed for temperament, structural soundness and fertility for a period of two years, the exception being if the problem is caused by injury or disease.

Customers are asked to contact Bonnydale as soon as an issue arises. If the bull needs to be replaced Bonnydale will select an appropriate replacement commensurate to the breeding and value of the bull to be replaced.

INSURANCE

Ownership of the bull transfers at the fall of the hammer. The vendors will take all care and no responsibility until the bulls are delivered.

We recommend insuring your purchase on sale day at the conclusion of the auction. An Elders Insurance representative will be in attendance.

The Future Is Now

Bonnydale Black Simmentals 27th Annual On-Property Bull Sale will offer 85 elite Black Simmental and Simangus sires on Monday March 13.

The Introvigne family now operate two separate businesses, the cattle operation will continue as Introvigne Grazing Company, which includes Bonnydale Black Simmentals, with a dedicated, professional team focused on the continued development of the genetic base and customer focus. Tandara Farms now operates the cropping business with its own dedicated team. This will ensure the generational legacy continues for both future generations and Bonnydale customers alike.

We believe that the true measure of success is how well our genetics work in the commercial cow/calf operations, feedlots, off grass and on the hook. Therein lie the profitability drivers that ultimately keep our customers in business for the long haul. That is why satisfied customers keep returning to purchase the outstanding genetics offered that continually deliver so it's no wonder Bonnydale bulls are in high demand Australia wide.

Bonnydale utilises International Genetic Solutions (IGS) through the American Simmental Association and was one of the early adopters of this world leading performance database in Australia. Every registered animal, including all bulls, have been DNA parent verified and carry comprehensive Genomic Enhanced EPD's. This is achieved by using the ASA Calf Crop Genomics program where every calf is DNA tested. After many years of deliberation Simmental Australia has joined IGS which vindicates the Introvigne family's foresight.

Our breeding objectives have been developed to deliver an efficient cow herd that can wean heavy, market suited weaners year-in and year-out. An alliance with Willie Altenburg's ASR Ranch in Colorado, USA, has underpinned the development of an elite cow herd via the annual supply of elite embryos. Due to his retirement, Willie sold the herd in its entirety to Triangle J Simmentals where the alliance continues under the stewardship of principles Darby and Annette Line. Triangle J Ranch has 1200 registered females and is noted for providing the Simmental breed with exceptional AI sires both in the USA and Australia. Willie has agreed to continue providing Bonnydale with his expertise sourcing new genetics and consulting with Triangle J Simmentals to deliver new elite embryos for Bonnydale.

This balanced common-sense focus combined with science is delivering exceptional results for our customers. Proof of Bonnydale's genetic advantage can be found in the downstream performance, at the feedlot and off grass where Bonnydale genetics, particularly Simangus calves are excelling. These calves are delivering PCAS grassfed yearlings and have become PCAS preferred for Woolworths' WA grassfed beef program, suppliers. The performance of Bonnydale genetics in feedlots is well known, be it reduced days on feed, feed conversion, performance and carcass compliance or reduced animal health costs, these all provide for a more profitable feeding scenario.

Bonnydale's reputation is underpinned by the principles of the "Triangle B" brand, recognised for integrity, innovation and investment. These three principles guide every facet of the Bonnydale stud program and are exemplified by the first sons to be offered this year from some exciting new Bonnydale homebred sires. These sires include Dividend R43, Revenue, Rhino, Rawhide and Rock N Roll and have provided an exceptional line of exciting bulls in the offering. Add to this proven USA sires Broad Range, Proclamation and Roosevelt and homebred sire Quaker with new ET sire BCLR Cashflow providing several exciting sons.

In the Simangus offering, several sons of Angus sire Texas Powerplay will turn heads with their style and performance, all of which are out of heifers. The likes of proven Bonnydale sires SA Hector, SA Matauri, SA Legend and Patriot and new sire SA Klooney combine to provide for an exciting Simangus line-up.

Bonnydale Roosevelt T98 (lot 3) leads an outstanding team with his presence, performance and overall balance. Sired by the powerful, USA sire, TJ Roosevelt and out of Bonnydale Galaxy M47 who has a pedigree stacked with maternal excellence.

Bonnydale Dividend T70 (lot 4) by Bonnydale Dividend R43, exemplifies the outstanding traits carried through from grandsire CLRS Dividend 405D, balanced all round performance with top end growth.

Bonnydale Revenue T239 (lot 5) is another grandson of CLRS Dividend 405D. A powerful young Bonnydale Revenue son with top end growth and carcass and with built in maternal excellence from his dam Bonnydale Carlene Q87.



2019 - INTROVIGNE FAMILY
Back; Tyson, Julie, Nathan, Stella, Rowen, Cora & Diane.
Front; Mike, Rita & Rob.

Bonnydale Rhino T237 (lot 6) is the first of the Bonnydale Rhino sons to be offered. Another example of powerful growth and carcass with maternal strength from his dam Bonnydale Goldie P57.

Bonnydale Rock N Roll T232 (lot 8) carries a prepotent sire pedigree (Augustus) and an equally strong maternal lineage. Balanced performance and carcass with docility and softness makes for a great prospect.

Bonnydale SA Legend T455 (lot 17) leads probably the best Simangus team we have presented. T455 always stands out for his power, thickness and extreme softness. His pedigree boasts the best Angus pedigrees of Coonamble Elevator, Clunie Range Legend and the maternal powerhouse of the Little Dessi cow family, what more could you ask for.

Free delivery Australia wide is offered on every bull sold at auction. Our unprecedented aftersales service program ensures customers are never left stranded. This is achieved by not utilising sale day credits to remedy problems thus ensuring everyone bidding at the sale is on the same level with no inducements. All bulls are guaranteed for temperament, structural soundness and fertility for a period of two years, the exception being if the problem is caused by injury or disease.



CLRS Dividend 405D, sire of Bonnydale Revenue & Bonnydale Dividend R43.

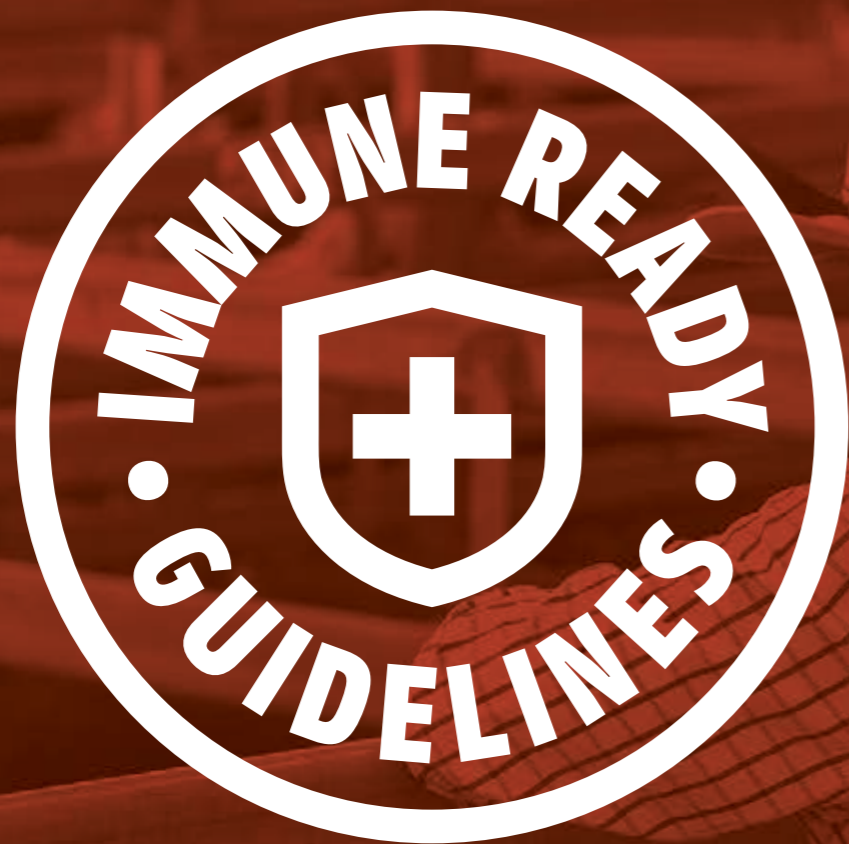


Emma Patterson & Jake Berghofer, partners and managers of Bonnydale QLD continue to grow the Queensland herd and develop the brand in that state.

Customers are asked to contact Bonnydale as soon as an issue arises. If the bull needs to be replaced Bonnydale will select an appropriate replacement commensurate to the breeding and value of the bull to be replaced.

Inspection from 10.00am followed by lunch at 12 noon precedes the sale at 1.00pm WST.

Further enquiries are available by contacting Rob Introvigne **0427 644 082** or Elders agent Pearce Watling **0437 844 528** or visit www.bonnydalesimmentals.com.



LOOK FOR THE SIGN BUY WITH CONFIDENCE

All bulls in this sale have been vaccinated for clostridial diseases, leptospirosis, pestivirus, vibriosis and infectious bovine rhinotracheitis (IBR). They have also been tested for pestivirus and are not persistently infected.

Other regionally important vaccines may have also been administered to enhance protection.

A National Cattle Health Declaration will be provided.



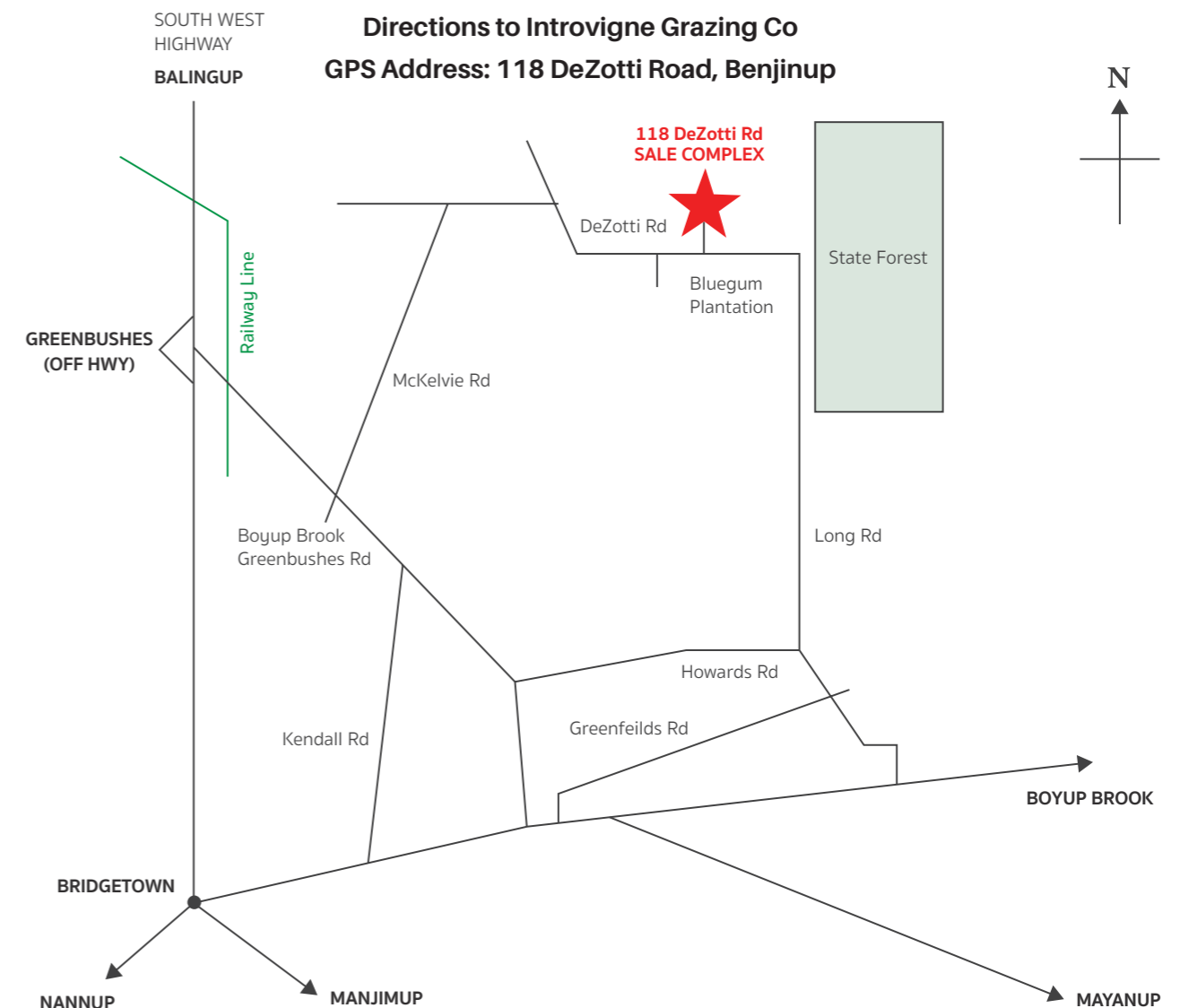
Learn more about
Immune Ready Guidelines

Bonnydale Black Simmentals

PROVEN, POWERFUL,
PREDICTABLE GENETICS
BACKED BY SCIENCE & DATA

WHY BONNYDALE SHOULD BE YOUR SOURCE OF SUPERIOR SIRES:

- Largest Black Simmental seedstock business in Australia
- 1300 Stud and Commercial breeders (WA)
- Professional seedstock operation
- DNA Parent Verified herd (every stud animal)
- Genomic Enhanced EPD's
- Meticulous & comprehensive performance records
- Comprehensive two year bull guarantee
- Maternal excellence
- Carcase superiority
- Feedlot preferred
- PCAS preferred
- Customer focused unsurpassed after sales service
- Bull sale free from credit inducements
- Environmentally sustainable beef operation



Accommodation - For sale visitors requiring accommodation please contact:
Bridgetown Motel on 08 9761 1641, 38 Hampton Street, Bridgetown WA 6255



AGRICULTURAL SUPPLIES



KOJONUP

BOYUP BROOK



For all your farming needs!

Agronomy Services, Seed, Chemical, Fertilizer, Fencing, Animal Health, Tillage Hire.

Agents for:



Lot 2 Thornbury Close **KOJONUP**
Ph 98311022 info@kojonupag.com.au



36 Forrest St **BOYUP BROOK**
Ph 97651015 info@boyupbrookag.com.au



CSBP Fertilisers is a proud sponsor of the Bonnydale Bull Sale.



We'd like to wish the Introvignes and prospective buyers all the best for this year's sale.

csbp-fertilisers.com.au

Bonnydale Black Simmentals

2023 REFERENCE SIRES



Bonnydale Rawhide



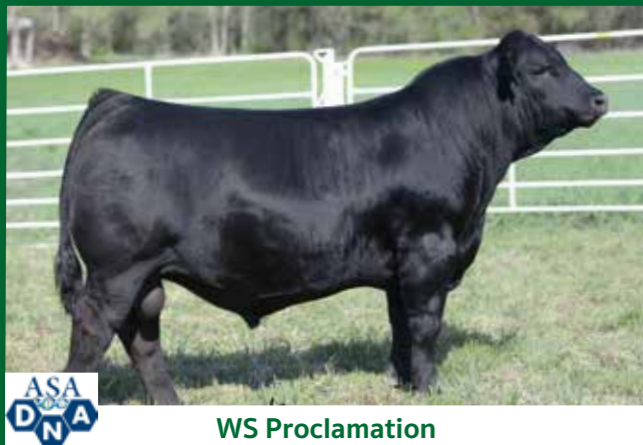
Bonnydale Revenue



Bonnydale SA Legend



CLRS Dividend



WS Proclamation



TJ Roosevelt



Bonnydale Rhino



Bonnydale Rock N Roll



Gibbs 7382E Broad Range



Bonnydale SA Matauri



Texas Powerplay



Bonnydale Quaker



Gibbs Element



THE INTROVIGNE FAMILY WISH TO
THANK OUR LOYAL BAND OF SPONSORS.



AMERICAN SIMMENTAL ASSOCIATION

QUICK REFERENCE TO ASA EPDS AND \$ INDEXES

Expected Progeny Differences (EPDs):

EPDs are the most accurate and effective tool available for comparing genetic levels. In using EPDs, the difference between two sires' EPDs represents the unit difference expected in the performance of their progeny. For example, if sires A and B have EPDs of +10 and -5, a 15-unit difference would be expected in their progeny (moving from -5 to +10 yields 15 units).

Key to using EPDs is knowing what units they are expressed in. For example, if the above case referred to weaning weight EPDs, A would be expected to sire 15-pounds more weaning weight than B. If calving ease were the trait, A would be expected to sire 15-percent more unassisted births in first-calf heifers; in other words, if B sired 30 assists in a group of 100 heifers, we'd expect A to require 15 assists.

A percentile-ranking chart is required to determine where a bull's EPDs rank him relative to other bulls in the breed. For percentile rankings or more detailed information about EPDs and \$ indexes visit www.simmental.org.

Listed below are the units ASA EPDs are expressed in:

All-Purpose Index (API): Dollars per cow exposed under an all-purpose-sire scenario. (See below for more details.)

Back Fat (BF): Inches of backfat.

Birth Weight (BW): Pounds of birth weight.

Calving Ease (CE): Percent of unassisted births when used on heifers.

Carcass Weight (CW): Pounds of carcass weight.

Maternal Calving Ease (MCE): Percent of unassisted births in first-calving daughters.

Milk (MLK): Pounds of weaning weight due to milk.

Marbling (MRB): Marbling score.

Maternal Weaning Weight (MWW): Pounds of weaning weight due to milk and growth.

Ribeye Area (REA): Square inches of ribeye.

Warner-Bratzler Shear Force (WBSF): Pounds of force required to shear a steak.

Stayability (STAY): Percent of daughters remaining in the cowherd at 6 years of age.

Terminal Index (TI): Dollars per cow exposed under a terminal-sire scenario. (See below for more details.)

Weaning Weight (WW): Pounds of weaning weight.

Yearling Weight (YW): Pounds of yearling weight.

Yield Grade (YG): Yield grade score, the lower the better.

\$ Indexes: Though EPDs allow for the comparison of genetic levels for many economically important traits, they only provide a piece of the economic puzzle. That's where \$ indexes come in. Through well-conceived, rigorous mathematical computation, \$ indexes blend EPDs and economics to estimate an animal's overall impact on your bottom line. The same technology that led to the dramatic progress in swine, poultry and dairy genetics over the last several decades was used to develop the following \$ indexes:

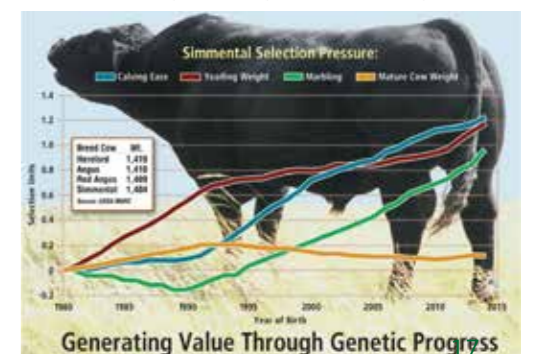
All-Purpose Index (API): Evaluates sires for use on the entire cow herd (bred to both Angus first-calf heifers and mature cows) with the portion of their daughters required to maintain herd size retained and the remaining heifers and steers put on feed and sold grade and yield.

Terminal Index (TI): Evaluates sire for use on mature Angus cows with all offspring put on feed and sold grade and yield.

Using API and TI: First, determine which index to use; if you're keeping replacements use API, if not, TI.

Then, just as with EPDs, zero in on the unit difference between bulls. (As described above, index units are in dollars per cow exposed.) The difference can be used to determine how much a bull is worth compared to another. Or, put another way, how much you can pay for one bull compared to another. For example, when buying an all-purpose-type sire, you can quickly figure a bull scoring +100 for API is worth an extra \$6,000 over a +50 bull if both are exposed to 30 cows over 4 years (\$50 diff. x 30 hd. x 4 yr. = \$6,000). A percentile-ranking chart is required to determine where a bull's index value ranks him relative to other bulls in the breed. For percentile rankings or more detailed information about EPDs and \$ indexes visit www.simmental.org.

The genetic trends displayed right have a direct impact on the Bonnydale herd because we have chosen to exclusively utilise superior USA Black Simmental genetics.



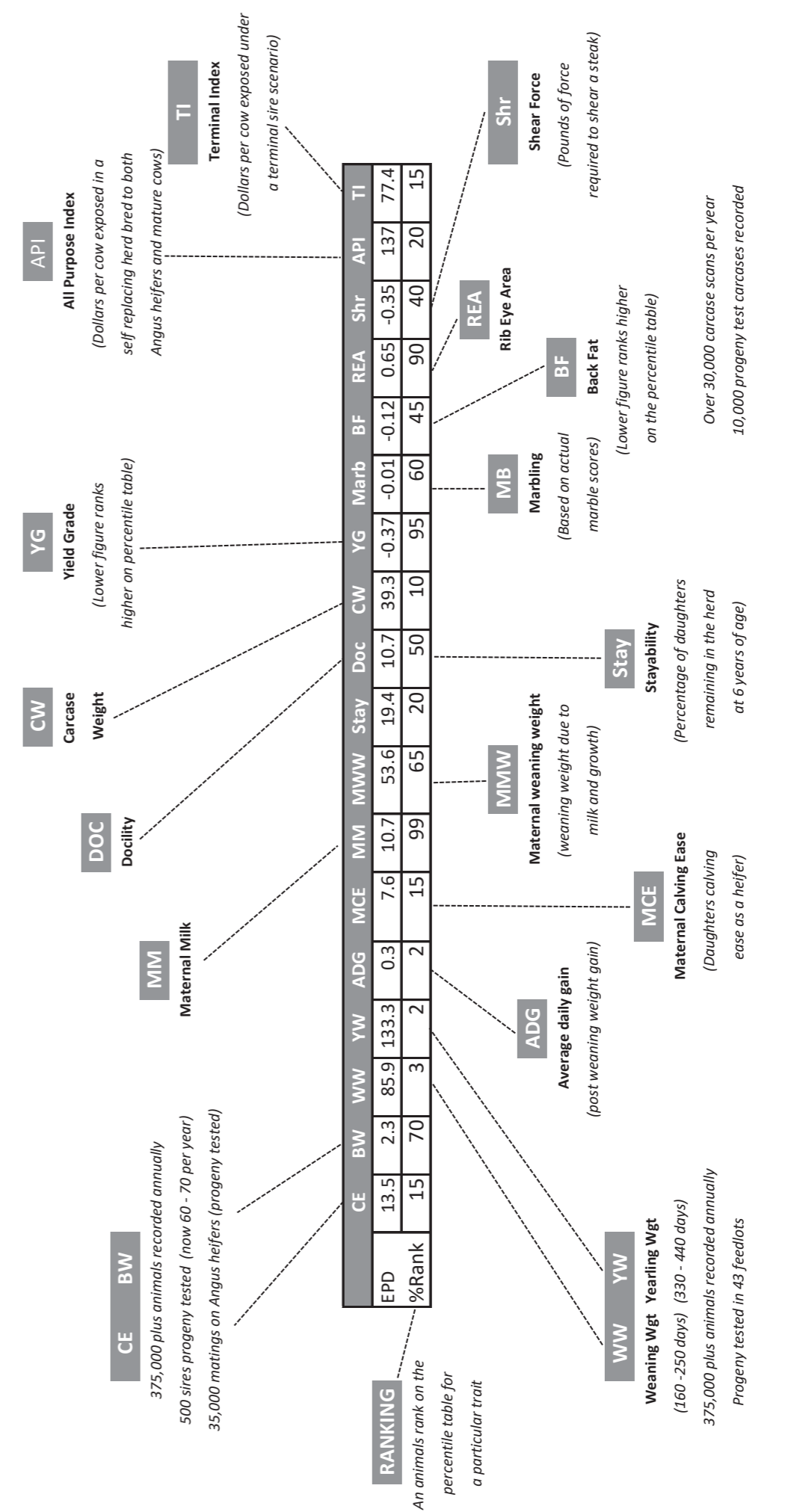
2023 PUREBRED SIMMENTAL PERCENTILE TABLE

%	API	TI	CE	BW	WW	PWG	YW	MCE	MLK	MWW	STY	DOC	CWT	YG	MRB	BF	REA	SF
1	181.94	103.03	18.30	-3.70	103.80	0.37	161.20	10.80	35.30	81.00	22.80	18.30	56.20	-0.58	0.68	-0.13	1.33	-0.47
2	175.76	100.21	17.30	-2.90	100.60	0.36	155.40	10.20	33.60	78.90	22.10	17.50	52.60	-0.56	0.61	-0.12	1.27	-0.46
3	171.63	98.24	16.70	-2.50	98.40	0.35	152.20	9.80	32.60	77.60	21.60	17.00	50.30	-0.55	0.56	-0.12	1.24	-0.44
4	168.45	96.87	16.30	-2.20	96.90	0.34	149.70	9.50	32.00	76.60	21.20	16.60	48.60	-0.54	0.53	-0.12	1.21	-0.44
5	166.08	95.72	16.00	-1.90	95.70	0.33	147.70	9.30	31.40	75.80	20.90	16.30	47.40	-0.53	0.50	-0.11	1.19	-0.43
10	157.73	91.61	14.70	-1.10	91.70	0.31	140.50	8.40	29.60	72.90	20.00	15.20	43.20	-0.50	0.40	-0.11	1.11	-0.41
15	152.32	88.94	13.90	-0.50	89.10	0.30	135.90	7.90	28.40	71.00	19.40	14.50	40.20	-0.49	0.34	-0.10	1.06	-0.40
20	147.91	86.83	13.30	-0.10	87.00	0.29	132.20	7.50	27.50	69.50	18.90	13.90	38.00	-0.47	0.29	-0.10	1.03	-0.39
25	143.98	85.15	12.80	0.20	85.20	0.28	128.90	7.10	26.70	68.20	18.40	13.40	36.20	-0.46	0.26	-0.10	0.99	-0.38
30	140.94	83.64	12.40	0.60	83.60	0.27	126.10	6.80	26.00	67.00	17.90	13.00	34.50	-0.45	0.23	-0.09	0.97	-0.37
35	137.85	82.19	12.00	0.80	82.10	0.26	123.40	6.50	25.30	65.80	17.50	12.60	32.90	-0.44	0.20	-0.09	0.94	-0.36
40	135.19	80.88	11.70	1.10	80.70	0.25	121.00	6.20	24.70	64.70	17.00	12.30	31.50	-0.43	0.18	-0.09	0.92	-0.35
45	132.60	79.64	11.30	1.30	79.40	0.25	118.70	5.90	24.10	63.70	16.60	11.90	30.20	-0.42	0.15	-0.09	0.90	-0.35
50	130.12	78.49	11.00	1.50	78.20	0.24	116.40	5.70	23.50	62.60	16.10	11.60	28.90	-0.41	0.13	-0.08	0.88	-0.34
55	127.76	77.31	10.60	1.80	77.00	0.23	114.30	5.40	22.90	61.60	15.70	11.20	27.60	-0.40	0.11	-0.08	0.86	-0.33
60	125.40	76.14	10.30	2.00	75.80	0.23	112.10	5.20	22.30	60.60	15.20	10.90	26.40	-0.39	0.09	-0.08	0.84	-0.32
65	123.07	75.02	9.90	2.20	74.60	0.22	109.90	4.90	21.70	59.50	14.60	10.50	25.20	-0.38	0.07	-0.08	0.82	-0.32
70	120.58	73.89	9.50	2.40	73.30	0.21	107.70	4.60	21.10	58.50	14.10	10.10	23.90	-0.37	0.05	-0.07	0.79	-0.31
75	118.04	72.71	9.10	2.70	72.00	0.20	105.30	4.30	20.50	57.50	13.60	9.60	22.60	-0.36	0.03	-0.07	0.77	-0.30
80	115.52	71.44	8.60	3.00	70.50	0.20	102.80	4.00	19.80	56.40	12.90	9.10	21.20	-0.34	0.01	-0.07	0.75	-0.29
85	112.59	70.00	8.00	3.30	68.80	0.19	99.80	3.60	19.00	55.20	12.20	8.50	19.50	-0.33	-0.01	-0.06	0.72	-0.28
90	109.32	68.23	7.20	3.70	66.70	0.18	96.30	3.10	18.00	53.70	11.40	7.60	17.50	-0.31	-0.05	-0.06	0.68	-0.26
95	104.41	65.72	5.90	4.40	63.50	0.16	91.40	2.20	16.60	51.70	10.30	6.10	14.40	-0.27	-0.09	-0.05	0.62	-0.24
Avg	130.12	78.49	11.00	1.50	78.20	0.24	116.40	5.70	23.50	62.60	16.10	11.60	28.90	-0.41	0.13	-0.08	0.88	-0.34

2023 SIMANGUS PERCENTILE TABLE

%	API	TI	CE	BW	WW	PWG	YW	MCE	MLK	MWW	STY	DOC	CWT	YG	MRB	BF	REA	SF
1	185.45	101.83	20.30	-5.40	102.30	0.40	163.60	12.10	33.40	78.80	22.60	19.50	62.80	-0.50	0.99	-0.11	1.21	-0.49
2	178.31	99.25	19.20	-4.60	99.30	0.38	157.60	11.50	32.00	76.70	21.70	18.50	58.50	-0.47	0.89	-0.10	1.14	-0.47
3	174.04	97.53	18.60	-4.20	97.30	0.37	154.20	11.10	31.10	75.40	21.20	17.80	56.00	-0.45	0.83	-0.10	1.09	-0.46
4	170.77	96.31	18.10	-3.80	95.70	0.36	151.60	10.70	30.60	74.50	20.70	17.40	54.00	-0.44	0.78	-0.09	1.06	-0.45
5	167.96	95.22	17.70	-3.50	94.50	0.35	149.50	10.50	30.00	73.60	20.40	17.10	52.60	-0.42	0.75	-0.09	1.04	-0.44
10	159.45	91.69	16.40	-2.60	90.50	0.33	142.50	9.60	28.50	70.90	19.30	15.90	47.60	-0.38	0.64	-0.08	0.95	-0.42
15	154.00	89.27	15.60	-2.00	87.70	0.32	137.70	9.00	27.40	69.00	18.50	15.20	44.40	-0.35	0.57	-0.07	0.89	-0.40
20	149.78	87.39	14.90	-1.50	85.60	0.31	133.90	8.60	26.60	67.50	17.90	14.60	42.00	-0.33	0.52	-0.07	0.85	-0.39
25	146.24	85.72	14.40	-1.10	83.70	0.30	130.60	8.20	25.90	66.30	17.40	14.10	39.90	-0.31	0.48	-0.06	0.81	-0.38
30	142.78	84.25	13.90	-0.80	82.00	0.29	127.70	7.80	25.20	65.10	16.90	13.60	38.10	-0.29	0.44	-0.06	0.78	-0.37
35	139.66	82.80	13.50	-0.50	80.40	0.28	125.10	7.50	24.60	64.10	16.40	13.30	36.40	-0.28	0.41	-0.05	0.75	-0.37
40	136.54	81.47	13.10	-0.20	79.00	0.27	122.60	7.20	24.10	63.10	16.00	12.90	34.80	-0.26	0.38	-0.05	0.72	-0.36
45	133.60	80.15	12.70	0.10	77.70	0.27	120.10	7.00	23.50	62.20	15.50	12.50	33.30	-0.24	0.35	-0.05	0.70	-0.35
50	130.83	78.89	12.40	0.30	76.30	0.26	117.70	6.70	23.00	61.20	15.10	12.20	31.80	-0.23	0.32	-0.04	0.67	-0.34
55	127.92	77.55	12.00	0.60	75.00	0.25	115.30	6.40	22.50	60.30	14.60	11.80	30.30	-0.21	0.29	-0.04	0.64	-0.34
60	124.99	76.14	11.60	0.80	73.60	0.25	112.90	6.10	22.00	59.30	14.10	11.50	28.90	-0.20	0.27	-0.04	0.62	-0.33
65	122.13	74.76	11.30	1.00	72.30	0.24	110.60	5.90	21.50	58.30	13.60	11.20	27.50	-0.18	0.25	-0.03	0.59	-0.32
70	119.18	73.35	10.90	1.30	70.90	0.23	108.20	5.60	20.90	57.40	13.00	10.80	26.10	-0.16	0.22	-0.03	0.56	-0.31
75	116.09	71.93	10.40	1.60	69.50	0.22	105.70	5.20	20.30	56.40	12.40	10.30	24.50	-0.14	0.19	-0.02	0.53	-0.30
80	112.76	70.42	9.90	1.90	67.90	0.21	102.90	4.80	19.60	55.20	11.60	9.80	22.70	-0.12	0.16	-0.02	0.50	-0.29
85	109.11	68.79	9.30	2.20	66.00	0.20	99.50	4.40	18.80	53.90	10.80	9.20	20.50	-0.10	0.13	-0.01	0.45	-0.28
90	104.41	66.73	8.50	2.70	63.40	0.19	95.20	3.80	17.80	52.20	9.80	8.30	18.00	-0.07	0.09	-0.01	0.40	-0.26
95	97.56	63.59	7.30	3.40	59.50	0.17	88.60	2.90	16.20	49.60	8.30	6.80	14.20	-0.02	0.03	0.00	0.32	-0.24
Avg	130.83	78.89	12.40	0.30	76.30	0.26	117.70	6.70	23.00	61.20	15.10	12.20	31.80	-0.23	0.32	-0.04	0.67	-0.34

QUICK GUIDE TO American Simmental Association EPD's



There are two percentile tables to consider, a Purebred table and a Hybrid table. Utilise the Purebred table for Purebred bulls and the Hybrid table for SimAngus bulls. All bull's EPD's are directly comparable, the percentile ranking is used to compare Purebred to Purebred and SimAngus to SimAngus.

How to Register and Bid on AuctionsPlus

- 1 Go to www.auctionsplus.com.au to register at least 48 hours before the sale.
- 2 Select “Sign Up” in the top right hand corner.
- 3 Fill out your name, mobile number, email address and create a password.
- 4 Go to your emails and confirm the account.
- 5 Return to AuctionsPlus and log in.
- 6 Select “Dashboard” and then select “Request Approval to Buy”.
- 7 Fill in buyer details and once completed go back to Dashboard.
- 8 Complete buyer induction module (approx. 30 minutes).
- 9 AuctionsPlus will email you to let you know that your account has been approved.
- 10 Log in on sale day and connect to auction.
- 11 Bid using the two-step process – unlock the bid button and bid at that price.
- 12 If you are successful, the selling agent will contact you post sale to organise delivery and payment.

For more information please contact us on:
Phone: (02) 9262 4222
Email: info@auctionsplus.com.au

Selection of Bulls Suitable For Heifers

When selecting bulls for heifers we encourage the use of Genomic Enhanced EPD’s for Calving Ease (CE) and Birthweight. We recommend selecting a bull with a birthweight EPD in the 30th percentile or better and CE better than breed average.

- STEP 1** Select Birthweight in 30th percentile or better.
- STEP 2** Select accuracy of 0.40 or higher.
- STEP 3** If unsure of your selection please ask either Rob or Mike to assist you.

The following indicates a bull that fits the criteria for use on heifers

	EPD	CE	Brth	Wean	Year
	15.8	-1.4	77.8	117.2	
ACC	0.43	0.49	0.44	0.44	
%	15	20	45	50	

Example Sires:



Gibbs 7382E Broad Range

	CE	Brth	Wean	Year
EPD	15.3	-1.7	91.6	153
Acc	0.7	0.86	0.82	0.81
%	10	10	10	3



WS Proclamation E202

	CE	Brth	Wean	Year
EPD	12.6	0.4	99.7	146.6
Acc	0.79	0.93	0.91	0.89
%	30	25	2	5

TAKING DELIVERY OF YOUR NEW BULL

Delivery of bulls will begin a few days after sale day.
 You will be contacted at least one day prior to delivery.

Please ensure you have at least one animal in the receival yard this will ensure you new purchase has company upon arrival. These bulls have been with their mates for a long time and have not been separated on their own before.



1 BONNYDALE BROAD RANGE T16 Animal qualified through DNA to both Sire and Dam

AUS#: MBBPT016 ASA#: (4069909) Tattoo: T016
 BD: 7/01/2022 Colour: Homo Black HPS: Homo Polled
 NLIS No: 982 123779748684

Black Simmental

CCR WIDE RANGE 9005A
 Sire: GIBBS 7382E BROAD RANGE
 SSF BLK LOUISE Y534

WS PROCLAMATION E202
 Dam: BONNYDALE JOSIE R124
 BONNYDALE JOSIE N155

BW	\$ Index Values	
kg	\$API	\$TI
	159	95

	CE	BW	WW	YW	ADG	MCE	MILK	MWW	STAY	DOC	CW	YG	MB	BF	REA	Shr
EPDs	15	-1.9	93.7	148.7	.34	7.9	24.8	71.6	17.8	8	50.3	-.29	.25	-.038	1.14	-.41
%	20	20	10	10	10	30	35	10	25	95	10	35	70	65	3	15
ACC	.28	.35	.31	.30	.30	.23	.20	.25	.15	.29	.23	.19	.20	.20	.22	.03

Traits Observed: BW, CE, WW, Doc

Purchaser: Price:

2 BONNYDALE ELEMENT T149 Animal qualified through DNA to both Sire and Dam

AUS#: MBBPT149 ASA#: (4069516) Tattoo: T149
 BD: 24/01/2022 Colour: Homo Black HPS: Homo Polled
 NLIS No: 982 123779748534

Black Simmental

GW-WBF SUBSTANCE 820Y
 Sire: GIBBS 3009A ELEMENT
 GIBBS 9128W MABELLE N341

CCR COWBOY CUT 5048Z
 Dam: ASR MS DESI D6238
 ASR LITTLE DESSI Z213

BW	\$ Index Values	
kg	\$API	\$TI
	152	94

	CE	BW	WW	YW	ADG	MCE	MILK	MWW	STAY	DOC	CW	YG	MB	BF	REA	Shr
EPDs	10.6	2.9	92.6	147.8	.35	5.7	26.4	72.7	15.6	16.6	51.7	-.39	.47	-.099	.99	-.36
%	60	80	10	5	4	55	30	15	60	5	3	65	10	30	30	40
ACC	.42	.46	.48	.47	.47	.27	.24	.31	.36	.46	.44	.35	.41	.38	.40	.06

Traits Observed: CE, BW, WW, Doc, Genomics

Purchaser: Price:

3 BONNYDALE ROOSEVELT T98 Animal qualified through DNA to both Sire and Dam

AUS#: MBBPT098 ASA#: (4069625) Tattoo: T098
 BD: 17/01/2022 Colour: Homo Black HPS: Polled
 NLIS No: 982 123784795270

Black Simmental

CCR COWBOY CUT 5048Z
 Sire: TJ ROOSEVELT 366E
 TJ 99A

BONNYDALE RANCH HAND K101
 Dam: BONNYDALE GALAXY M47
 BONNYDALE GALAXY K122

BW	\$ Index Values	
kg	\$API	\$TI
	129	81

	CE	BW	WW	YW	ADG	MCE	MILK	MWW	STAY	DOC	CW	YG	MB	BF	REA	Shr
EPDs	9.8	2.8	87.2	129.6	.26	6	29.4	72.9	17.2	14.1	31.6	-.52	.06	-.114	1.01	-.41
%	70	80	20	25	40	45	15	15	40	20	40	10	70	5	25	15
ACC	.46	.51	.48	.47	.47	.28	.22	.31	.34	.45	.42	.34	.38	.36	.40	.05

Traits Observed: CE, BW, WW, Doc, Genomics

Purchaser: Price:

4 BONNYDALE DIVIDEND T70 Animal qualified through DNA to both Sire and Dam

AUS#: MBBPT070 ASA#: (4069957) Tattoo: T070
 BD: 15/01/2022 Colour: Homo Black HPS: Polled
 NLIS No: 982 123784795359

Black Simmental

CLRS DIVIDEND 405D
 Sire: BONNYDALE DIVIDEND R43
 ASR LITTLE DESI D6273

BONNYDALE KNOXVILLE
 Dam: BONNYDALE GOLDIE K106
 BONNYDALE GOLDIE G205

BW	\$ Index Values	
kg	\$API	\$TI
	136	85

	CE	BW	WW	YW	ADG	MCE	MILK	MWW	STAY	DOC	CW	YG	MB	BF	REA	Shr
EPDs	15	1.6	91.9	137.5	.28	6.8	25.3	71.2	15.4	15.7	41.4	-.42	.06	-.104	.91	-.45
%	10	55	10	15	30	35	40	15	60	10	15	50	70	15	45	3
ACC	.41	.46	.43	.41	.41	.20	.15	.24	.30	.41	.37	.29	.33	.29	.35	.03

Traits Observed: CE, BW, WW, Doc, Genomics

Purchaser: Price:

5 BONNYDALE REVENUE T239 Animal qualified through DNA to both Sire and Dam

AUS#: MBBPT239 ASA#: (4069915) Tattoo: T239
 BD: 1/02/2022 Colour: Homo Black HPS: Homo Polled
 NLIS No: 982 123771306226

Black Simmental

CLRS DIVIDEND 405D
 Sire: BONNYDALE REVENUE
 ASR LITTLE DESI D6273

BONNYDALE AUGUSTUS L84
 Dam: BONNYDALE CARLENE Q087
 BONNYDALE CARLENE K201

BW	\$ Index Values	
kg	\$API	\$TI
	114	81

	CE	BW	WW	YW	ADG	MCE	MILK	MWW	STAY	DOC	CW	YG	MB	BF	REA	Shr
EPDs	9.4	2.5	98.6	152.2	.33	3.4	25.5	74.8	16	18.1	53.4	-.50	-.07	-.117	1.20	-.43
%	85	90	3	4	15	95	30	4	45	3	5	2	99	1	2	10
ACC	.42	.47	.43	.41	.41	.21	.14	.24	.29	.41	.36	.29	.33	.31	.35	.03

Traits Observed: CE, BW, WW, Doc, Genomics

Purchaser: Price:

6 BONNYDALE RHINO T237 Animal qualified through DNA to both Sire and Dam

AUS#: MBBPT237 ASA#: (4069842) Tattoo: T237
 BD: 1/02/2022 Colour: Homo Black HPS: Polled
 NLIS No: 982 123779748587

Black Simmental

TNT TANKER U263
 Sire: BONNYDALE RHINO
 BONNYDALE BLACK MIRANDA L127

RCR AUGUSTUS R54
 Dam: BONNYDALE GOLDIE P57
 BONNYDALE GOLDIE K221

BW	\$ Index Values	
kg	\$API	\$TI
	105	69

	CE	BW	WW	YW	ADG	MCE	MILK	MWW	STAY	DOC	CW	YG	MB	BF	REA	Shr
EPDs	2.7	5.5	86.8	138.5	.32	-0.5	18.2	61.5	19.5	14.2	45.8	-.50	-.04	-.121	1.09	-.34
%	99	99	20	15	20	99	90	50	10	25	15	2	99	1	4	60
ACC	.42	.47	.43	.42	.42	.22	.14	.24	.31	.40	.37	.30	.34	.31	.36	.02

Traits Observed: CE, BW, WW, Doc, Genomics

Purchaser: Price:

7 BONNYDALE ROOSEVELT T203 Animal qualified through DNA to both Sire and Dam

AUS#: MBBPT203 ASA#: (4069823) Tattoo: T203
 BD: 27/01/2022 Colour: Homo Black HPS: Homo Polled
 NLIS No: 982 123779748633

Black Simmental

Sire: TJ ROOSEVELT 366E
 TJ 99A

Dam: BONNYDALE JOSIE N159
 BONNYDALE JOSSIE G204

BW	\$ Index Values	
kg	\$API	\$TI
	131	88

	CE	BW	WW	YW	ADG	MCE	MILK	MWW	STAY	DOC	CW	YG	MB	BF	REA	Shr
EPDs	5	5.1	100.8	150.9	.31	0.9	19.3	69.7	17	15.6	38.7	-.45	.20	-.090	1.09	-.41
%	99	99	2	4	15	99	85	20	45	10	20	35	40	50	15	15
ACC	.42	.46	.48	.47	.47	.27	.21	.29	.33	.46	.41	.34	.39	.36	.41	.05

Traits Observed: CE, BW, WW, Doc, Genomics

Purchaser: Price:

8 BONNYDALE ROCK N ROLL T232 Animal qualified through DNA to both Sire and Dam

AUS#: MBBPT232 ASA#: (4069715) Tattoo: T232
 BD: 30/01/2022 Colour: Homo Black HPS: Polled
 NLIS No: 982 123779748543

Black Simmental

Sire: BONNYDALE AUGUSTUS L84
 BONNYDALE ROCK N ROLL
 BONNYDALE GEORGIA J166

Dam: BONNYDALE CAMILLE P69
 ASR MS CAMILLE W967

BW	\$ Index Values	
kg	\$API	\$TI
	127	81

	CE	BW	WW	YW	ADG	MCE	MILK	MWW	STAY	DOC	CW	YG	MB	BF	REA	Shr
EPDs	12	1.5	91.3	142.1	.32	5.9	23.5	69.2	18.1	18.1	40	-.40	.06	-.087	.96	-.36
%	60	75	10	15	20	70	50	15	20	3	25	10	95	10	10	45
ACC	.43	.48	.44	.43	.43	.22	.16	.25	.30	.42	.38	.30	.34	.32	.36	.02

Traits Observed: CE, BW, WW, Doc, Genomics

Purchaser: Price:

9 BONNYDALE JUSTICE T196 Animal qualified through DNA to both Sire and Dam

AUS#: MBBPT196 ASA#: (4069513) Tattoo: T196
 BD: 26/01/2022 Colour: Homo Black HPS: Polled
 NLIS No: 982 123784795285

Black Simmental

Sire: BONNYDALE JUSTICE P105
 ASR MS CAMILLE W967

Dam: BONNYDALE LOAD TRACK
 BONNYDALE GOLDIE N140
 BONNYDALE GOLDIE K106

BW	\$ Index Values	
kg	\$API	\$TI
	129	75

	CE	BW	WW	YW	ADG	MCE	MILK	MWW	STAY	DOC	CW	YG	MB	BF	REA	Shr
EPDs	13.8	2.1	83.8	127	.27	8.4	25.5	67.3	20.3	13.2	22.1	-.41	.06	-.097	.70	-.33
%	35	85	25	35	50	25	30	25	10	40	85	10	95	4	50	65
ACC	.41	.47	.43	.41	.41	.21	.16	.26	.29	.41	.36	.29	.33	.32	.34	.03

Traits Observed: CE, BW, WW, Doc, Genomics

Purchaser: Price:



NEW TECHNOLOGY. NEW INTERIOR. NEW EXPERIENCE

JCB has been building the unique Fastrac since 1991. It is the fastest production tractor in the world and unique in offering full front and rear suspension for unparalleled ride, comfort, traction & productivity.

The range of Fastrac 4000 & 8000 series tractors has been recently upgraded with the latest cab technology introducing a whole new operator experience, introducing the iCON control system. Built around three key areas, you can configure the controls to suit you, the system takes care of the integrated connections and you set up the cab exactly how you want it, simply drag and drop to set up your configurable buttons, while switching acceleration between pedal, rocker or joystick seamlessly.

iCONFIGURE -

Assign functions to main & auxiliary joysticks cross 50 control profiles.

iCONNECT -

Precision technology at your fingertips, plug-and-play implements with a range of fully-integrated ISOBUS options.

iCONTROL -

Redefining your driving experience with smart transmission control, seamlessly switch between pedal, stick and roller and pre-set cruise speeds at the touch of a button.



Contact the team at Bunbury Machinery for more information.



Real Machinery - Real Service - Real People

Cnr Picton Road & Forrest Avenue, Bunbury WA 6230

Ben Johnston - 0429 684 778
 Darren Pulford - 0417 929 487
 Reg Betham - 0408 931 030



10 BONNYDALE REVENUE T171 Animal qualified through DNA to both Sire and Dam

AUS#: MBBPT171 ASA#: (4069527) Tattoo: T171
 BD: 23/01/2022 Colour: Homo Black HPS: Homo Polled
 NLIS No: 982 123784795314

Black Simmental

Sire: CLRS DIVIDEND 405D
 BONNYDALE REVENUE
 ASR LITTLE DESI D6273

Dam: BONNYDALE KRUISER
 BONNYDALE JOSIE N127
 BONNYDALE JOSSIE J108

BW	\$ Index Values	
kg	\$API	\$TI
	140	84

	CE	BW	WW	YW	ADG	MCE	MILK	MWW	STAY	DOC	CW	YG	MB	BF	REA	Shr
EPDs	13.9	0	83.5	124.9	.26	8.3	25.6	67.3	17.1	20.6	35.7	-.41	.12	-.094	.88	-.44
%	20	25	35	35	40	15	35	30	40	1	30	55	55	30	55	5
ACC	.42	.47	.43	.41	.41	.20	.13	.23	.29	.41	.36	.30	.34	.30	.36	.03

Traits Observed: CE, BW, WW, Doc, Genomics

Purchaser: Price:

11 BONNYDALE DIVIDEND T80 Animal qualified through DNA to both Sire and Dam

AUS#: MBBPT080 ASA#: (4069963) Tattoo: T080
 BD: 15/01/2022 Colour: Black HPS: Polled
 NLIS No: 982 123784795227

Black Simmental

Sire: CLRS DIVIDEND 405D
 BONNYDALE DIVIDEND R43
 ASR LITTLE DESI D6273

Dam: MR NLC ICON X0104
 BONNYDALE LIL DESSI K114
 BONNYDALE LIL DESSI D202

BW	\$ Index Values	
kg	\$API	\$TI
	124	79

	CE	BW	WW	YW	ADG	MCE	MILK	MWW	STAY	DOC	CW	YG	MB	BF	REA	Shr
EPDs	13.6	0.6	85.3	124.3	.24	7.4	24.1	66.7	14.8	18.2	34.3	-.40	-.07	-.082	.92	-.41
%	20	35	25	35	55	25	50	35	65	2	35	60	95	50	45	15
ACC	.41	.47	.44	.42	.42	.21	.15	.24	.31	.41	.37	.30	.33	.31	.37	.03

Traits Observed: CE, BW, WW, Doc, Genomics

Purchaser: Price:

12 BONNYDALE PROCLAMATION T115 Animal qualified through DNA to both Sire and Dam

AUS#: MBBPT115 ASA#: (4069638) Tattoo: T115
 BD: 19/01/2022 Colour: Homo Black HPS: Polled
 NLIS No: 982 123784795192

Black Simmental

Sire: CCR COWBOY CUT 5048Z
 WS PROCLAMATION E202
 WS MISS SUGAR C4

Dam: RCR AUGUSTUS R54
 BONNYDALE GRANGE M31
 BONNYDALE GRANGE H266

BW	\$ Index Values	
kg	\$API	\$TI
	145	82

	CE	BW	WW	YW	ADG	MCE	MILK	MWW	STAY	DOC	CW	YG	MB	BF	REA	Shr
EPDs	10.6	3.2	86.5	127.1	.25	4.9	21.9	65.1	22.3	15.4	40.1	-.33	.19	-.084	.76	-.36
%	60	85	25	30	50	70	65	40	2	10	20	90	40	50	80	40
ACC	.46	.50	.48	.47	.47	.29	.23	.32	.36	.45	.42	.34	.39	.35	.41	.06

Traits Observed: CE, BW, WW, Doc, Genomics

Purchaser: Price:

13 BONNYDALE BROAD RANGE T122 Animal qualified through DNA to both Sire and Dam

AUS#: MBBPT122 ASA#: (4069537) Tattoo: T122
 BD: 20/01/2022 Colour: Homo Black HPS: Homo Polled
 NLIS No: 982 123779748542

Black Simmental

Sire: CCR WIDE RANGE 9005A
 GIBBS 7382E BROAD RANGE
 SSF BLK LOUISE Y534

Dam: CCR COWBOY CUT 5048Z
 ASR MS DESI D6238
 ASR LITTLE DESSI Z213

BW	\$ Index Values	
kg	\$API	\$TI
	156	83

	CE	BW	WW	YW	ADG	MCE	MILK	MWW	STAY	DOC	CW	YG	MB	BF	REA	Shr
EPDs	17.4	-1.5	75.2	116.1	.26	9.6	21.5	59	20	8.3	26.3	-.43	.21	-.059	1.11	-.42
%	2	10	65	55	40	4	70	70	15	90	65	45	35	95	15	10
ACC	.44	.47	.49	.48	.48	.27	.22	.30	.33	.47	.42	.34	.40	.36	.41	.04

Traits Observed: CE, BW, WW, Doc, Genomics

Purchaser: Price:

14 BONNYDALE CASH FLOW T148 Animal qualified through DNA to both Sire and Dam

AUS#: MBBPT148 ASA#: (4070039) Tattoo: T148
 BD: 22/01/2022 Colour: Homo Black HPS: Homo Polled
 NLIS No: 982 123779748570

Black Simmental

Sire: CCR WIDE RANGE 9005A
 BCLR CASH FLOW C820
 BCLR MISS MONICA U820

Dam: CCR COWBOY CUT 5048Z
 ASR MS JOSIE C5168
 ASR JOSIE W965

BW	\$ Index Values	
kg	\$API	\$TI
	153	91

	CE	BW	WW	YW	ADG	MCE	MILK	MWW	STAY	DOC	CW	YG	MB	BF	REA	Shr
EPDs	12.5	1.3	95.2	144.1	.31	7.2	12.7	60.3	19.6	17.3	44.4	-.55	.23	-.093	1.43	-.40
%	30	50	10	10	15	25	99	65	15	3	10	4	35	30	1	20
ACC	.43	.47	.48	.47	.47	.28	.24	.32	.35	.46	.42	.35	.40	.36	.42	.09

Traits Observed: CE, BW, WW, Doc, Genomics

Purchaser: Price:

15 BONNYDALE PROCLAMATION T47 Animal qualified through DNA to both Sire and Dam

AUS#: MBBPT047 ASA#: (4069880) Tattoo: T047
 BD: 12/01/2022 Colour: Black HPS: Polled
 NLIS No: 982 123784795229

Black Simmental

Sire: CCR COWBOY CUT 5048Z
 WS PROCLAMATION E202
 WS MISS SUGAR C4

Dam: BONNYDALE BLACK HAWK H274
 BONNYDALE GYPSY L87
 BONNYDALE GYPSY H241

BW	\$ Index Values	
kg	\$API	\$TI
	149	93

	CE	BW	WW	YW	ADG	MCE	MILK	MWW	STAY	DOC	CW	YG	MB	BF	REA	Shr
EPDs	11.9	0.7	94.2	143.5	.31	6.8	33.2	80.3	17.2	17.5	52.6	-.40	.26	-.091	1.08	-.37
%	40	35	10	10	15	35	3	2	40	3	3	60	30	30	15	35
ACC	.46	.51	.48	.47	.47	.29	.24	.33	.36	.46	.43	.34	.40	.35	.40	.05

Traits Observed: CE, BW, WW, Doc, Genomics

Purchaser: Price:



Pascoes Accounting & Advisory are dedicated to building an accounting and business advisory practice famous for delivering on its promises. We work with dozens of established enterprises to streamline their business operations and realise new opportunities. We also specialise in agile, affordable accounting services for new entrepreneurs with big plans for small start-ups.

INTEGRITY

INNOVATION

SERVICE

We're big enough to support your largest business initiative. But personal enough to ensure you'll always get our undivided attention.

BUNBURY
 155 Spencer Street, Bunbury WA 6230
 PO Box 6181, South Bunbury WA 6230
 Tel: 9792 1300
 Email: reception.bunbury@pascoesaa.com.au

KOJONUP
 123 Albany Highway, Kojonup WA 6395
 PO Box 206, Kojonup WA 6395
 Tel: 9831 2000
 Email: reception.kojonup@pascoesaa.com.au

PERTH
 Level 3, 643 Murray Street, Perth WA 6005
 PO Box 893, West Perth WA 6872
 Tel: 6323 7400
 Email: reception.perth@pascoesaa.com.au

16 BONNYDALE REVENUE T129

Animal qualified through DNA to both Sire and Dam

AUS#: MBBPT129 ASA#: (4069709) Tattoo: T129
 BD: 20/01/2022 Colour: Homo Black HPS: Polled
 NLIS No: 982 123771306218

Black Simmental

Sire: CLRS DIVIDEND 405D
 BONNYDALE REVENUE
 ASR LITTLE DESI D6273

Dam: RCR AUGUSTUS R54
 BONNYDALE GRENADA P16
 BONNYDALE GRENADA

BW	\$ Index Values	
kg	\$API	\$TI
133		82

	CE	BW	WW	YW	ADG	MCE	MILK	MWW	STAY	DOC	CW	YG	MB	BF	REA	Shr
EPDs	14.5	0.6	90.1	137.8	.30	5.4	21.7	66.7	17.6	15.9	34.7	-.43	.10	-.095	.92	-.40
%	25	60	15	15	30	75	65	25	25	15	45	5	90	4	15	20
ACC	.42	.48	.44	.43	.43	.22	.14	.24	.31	.41	.37	.30	.34	.31	.35	.04

Traits Observed: CE, BW, WW, Doc, Genomics

Purchaser: Price:

17 BONNYDALE SA LEGEND T455

Animal qualified through DNA to both Sire and Dam

AUS#: MBBDT455 ASA#: (4070007) Tattoo: T455
 BD: 22/01/2022 Colour: Black HPS: Polled
 NLIS No: 982 123784795356

1/2 Black Simmental 1/2 Angus

Sire: CLUNIE RANGE LEGEND L348
 BONNYDALE SA LEGEND Q331
 BONNYDALE JOSIE N142

Dam: BONNYDALE SA ELEVATOR L389
 BONNYDALE SA LIL DESSI Q342
 BONNYDALE SA LIL DESSI K375

BW	\$ Index Values	
kg	\$API	\$TI
108		76

	CE	BW	WW	YW	ADG	MCE	MILK	MWW	STAY	DOC	CW	YG	MB	BF	REA	Shr
EPDs	0.4	6.7	90	141.7	.32	1.4	25.8	70.7	14.7	19	40.9	-.19	.30	-.041	.70	
%	99	99	15	15	20	99	30	15	55	2	25	65	55	50	50	
ACC	.40	.46	.39	.37	.37	.17	.10	.21	.25	.37	.32	.26	.29	.27	.31	

Traits Observed: CE, BW, WW, Doc, Genomics

Purchaser: Price:

18 BONNYDALE SA POWERPLAY T423

Animal qualified through DNA to both Sire and Dam

AUS#: MBBDT423 ASA#: (4069809) Tattoo: T423
 BD: 11/01/2022 Colour: Black HPS: Polled
 NLIS No: 982 123784795357

3/8 Black Simmental 5/8 Angus

Sire: AYRVALE HERCULES H9
 TEXAS POWERPLAY P613
 TEXAS UNDINE H647

Dam: BONNYDALE SA MATAURI N304
 BONNYDALE SA ANNABELLE R411
 BONNYDALE SA ANNABELLE M350

BW	\$ Index Values	
kg	\$API	\$TI
121		77

	CE	BW	WW	YW	ADG	MCE	MILK	MWW	STAY	DOC	CW	YG	MB	BF	REA	Shr
EPDs	12.3	0.9	83.1	137.2	.34	8.1	23.7	65.2	14.8	8.8	46.2	-.24	.17	-.037	.94	
%	55	65	30	20	10	30	45	30	55	90	15	50	80	65	15	
ACC	.39	.42	.36	.35	.35	.15	.04	.15	.22	.34	.32	.25	.27	.24	.30	

Traits Observed: CE, BW, WW, Doc, Genomics

Purchaser: Price:



19 BONNYDALE SA AMERICAN T435

AUS#: MBBDT435 ASA#: (4113777) Tattoo: T435
 BD: 15/01/2022 Colour: Homo Black HPS: Polled
 NLIS No: 982 123784795316

3/4 Black Simmental 1/4 Angus

HOOK'S BLACK HAWK 50B
 Sire: ASR AMERICAN PATRIOT F843
 ASR MS PRIMROSE D663

COONAMBLE HECTOR H249
 Dam: BONNYDALE SA CARLENE R437
 BONNYDALE CARLENE K185

BW	\$ Index Values	
kg	\$API	\$TI
	130	79

	CE	BW	WW	YW	ADG	MCE	MILK	MWW	STAY	DOC	CW	YG	MB	BF	REA	Shr
EPDs	7.5	4.4	83.8	133.4	.31	4.7	26.3	68.1	18.2	17.6	40.2	-.26	.36	-.041	.89	-.21
%	95	99	25	25	25	85	25	20	20	4	25	45	45	50	20	99
ACC	.23	.32	.29	.27	.27	.18	.14	.21	.12	.26	.19	.15	.17	.16	.17	.01

Traits Observed: BW, CE, WW, Doc

Purchaser: Price:

20 BONNYDALE SA MATAURI T508

Animal qualified through DNA to both Sire and Dam

AUS#: MBBDT508 ASA#: (4069853) Tattoo: T508
 BD: 6/02/2022 Colour: Black HPS: Polled
 NLIS No: 982 123779748536

1/2 Black Simmental 1/2 Angus

MATAURI RESOLUTION F030
 Sire: BONNYDALE SA MATAURI N304
 BONNYDALE GOLDIE L75

BONNYDALE SA IDEAL
 Dam: BONNYDALE SA JANUARY J361
 BONNYDALE SA JANUARY

BW	\$ Index Values	
kg	\$API	\$TI
	108	69

	CE	BW	WW	YW	ADG	MCE	MILK	MWW	STAY	DOC	CW	YG	MB	BF	REA	Shr
EPDs	4	6.3	85.2	135.2	.31	3.3	19.1	61.6	18.8	14.9	26.8	-.27	.08	-.051	.68	
%	99	99	25	20	25	95	85	50	15	20	70	40	95	35	50	
ACC	.39	.45	.38	.37	.37	.19	.14	.24	.25	.38	.34	.27	.30	.27	.33	

Traits Observed: CE, BW, WW, Doc, Genomics

Purchaser: Price:

21 BONNYDALE SA POWERPLAY T425

Animal qualified through DNA to both Sire and Dam

AUS#: MBBDT425 ASA#: (4069796) Tattoo: T425
 BD: 11/01/2022 Colour: Black HPS: Polled
 NLIS No: 982 123784795318

3/8 Black Simmental 5/8 Angus

AYRVALE HERCULES H9
 Sire: TEXAS POWERPLAY P613
 TEXAS UNDINE H647

BONNYDALE JUSTICE P105
 Dam: BONNYDALE SA ANNABELLE R481
 BONNYDALE SA ANNABELLE N325

BW	\$ Index Values	
kg	\$API	\$TI
	127	78

	CE	BW	WW	YW	ADG	MCE	MILK	MWW	STAY	DOC	CW	YG	MB	BF	REA	Shr
EPDs	17.6	-1.8	79.5	133.7	.34	11.1	20.9	60.6	12.5	17.1	38.1	-.07	.20	.006	.64	
%	10	20	40	25	10	4	75	55	75	10	35	95	75	99	60	
ACC	.40	.44	.38	.36	.36	.15	.05	.17	.23	.35	.32	.25	.28	.25	.30	

Traits Observed: CE, BW, WW, Doc, Genomics

Purchaser: Price:

22 BONNYDALE CASH FLOW T213

Animal qualified through DNA to both Sire and Dam

AUS#: MBBPT213 ASA#: (4069968) Tattoo: T213
 BD: 28/01/2022 Colour: Homo Black HPS: Homo Polled
 NLIS No: 982 123779748533

Black Simmental

CCR WIDE RANGE 9005A
 Sire: BCLR CASH FLOW C820
 BCLR MISS MONICA U820

CCR COWBOY CUT 5048Z
 Dam: ASR MS DESI D6238
 ASR LITTLE DESSI Z213

BW	\$ Index Values	
kg	\$API	\$TI
	155	85

	CE	BW	WW	YW	ADG	MCE	MILK	MWW	STAY	DOC	CW	YG	MB	BF	REA	Shr
EPDs	15.9	0.6	90.2	141.5	.32	6.9	12.7	57.8	22.6	14.6	33.2	-.50	.07	-.080	1.24	-.36
%	10	35	15	10	10	30	99	75	2	15	35	15	70	70	4	40
ACC	.43	.47	.49	.48	.48	.29	.24	.31	.36	.46	.43	.34	.41	.37	.41	.06

Traits Observed: CE, BW, WW, Doc, Genomics

Purchaser: Price:

23 BONNYDALE ROOSEVELT T78

Animal qualified through DNA to both Sire and Dam

AUS#: MBBPT078 ASA#: (4069944) Tattoo: T078
 BD: 15/01/2022 Colour: Homo Black HPS: Polled
 NLIS No: 982 123784795289

Black Simmental

CCR COWBOY CUT 5048Z
 Sire: TJ ROOSEVELT 366E
 TJ 99A

BONNYDALE JASPER
 Dam: BONNYDALE LIL DESSI K178
 BONNYDALE LIL DESSI G227

BW	\$ Index Values	
kg	\$API	\$TI
	140	79

	CE	BW	WW	YW	ADG	MCE	MILK	MWW	STAY	DOC	CW	YG	MB	BF	REA	Shr
EPDs	9.1	3	80.9	122.7	.26	5.8	27.9	68.3	21.9	14.7	48.8	-.40	.16	-.065	1.24	-.36
%	90	95	35	40	55	70	15	20	2	20	10	10	85	25	1	45
ACC	.44	.50	.47	.46	.46	.25	.20	.30	.33	.44	.40	.32	.38	.34	.39	.05

Traits Observed: CE, BW, WW, Doc, Genomics

Purchaser: Price:

24 BONNYDALE DIVIDEND T184

Animal qualified through DNA to both Sire and Dam

AUS#: MBBPT184 ASA#: (4069658) Tattoo: T184
 BD: 24/01/2022 Colour: Homo Black HPS: Polled
 NLIS No: 982 123784795264

Black Simmental

CLRS DIVIDEND 405D
 Sire: BONNYDALE DIVIDEND R43
 ASR LITTLE DESI D6273

BONNYDALE JASPER
 Dam: BONNYDALE GRANGE H266
 BONNYDALE GRANGE

BW	\$ Index Values	
kg	\$API	\$TI
	104	66

	CE	BW	WW	YW	ADG	MCE	MILK	MWW	STAY	DOC	CW	YG	MB	BF	REA	Shr
EPDs	7.7	3.9	78	116.3	.24	3.3	21.9	60.8	17	16.1	37.3	-.54	-.23	-.120	1.10	-.41
%	90	95	55	55	55	90	65	60	45	10	25	5	99	5	15	15
ACC	.42	.47	.44	.43	.43	.21	.14	.24	.29	.41	.37	.29	.34	.29	.35	.03

Traits Observed: CE, BW, WW, Doc, Genomics

Purchaser: Price:



Your stock deserve the best

Quality pasture is the most cost-effective way to feed your livestock. We have the product range and knowledge to help.

PAY NOW, COLLECT LATER.
OFFER AVAILABLE UNTIL MARCH 24, 2023.

For the full range of available products please contact your CSBP account manager or sales agent to optimise your fertiliser strategy today.

Talk to us about how your CSBP NUlogic Soil Analysis results can be used to optimise your pastures this Autumn.



25 BONNYDALE DIVIDEND T186

Animal qualified through DNA to both Sire and Dam

AUS#: MBBPT186 ASA#: (4069619) Tattoo: T186
BD: 24/01/2022 Colour: Homo Black HPS: Homo Polled
NLIS No: 982 123784795439

Black Simmental

Sire: CLRS DIVIDEND 405D
BONNYDALE DIVIDEND R43
ASR LITTLE DESI D6273

Dam: KAPPES TRAILBLAZER S516
BONNYDALE JOSSIE G204
GLS S82

BW	\$ Index Values	
kg	\$API	\$TI
	120	82

	CE	BW	WW	YW	ADG	MCE	MILK	MWW	STAY	DOC	CW	YG	MB	BF	REA	Shr
EPDs	8.8	2.4	95.2	140.5	.28	3.7	24.1	71.6	16.2	6.6	46.4	-.61	-.11	-.138	1.31	-.44
%	80	75	10	15	30	85	50	15	50	95	10	1	99	1	2	5
ACC	.42	.48	.44	.43	.43	.23	.17	.26	.32	.43	.38	.31	.35	.33	.37	.03

Traits Observed: CE, BW, WW, Doc, Genomics

Purchaser: Price:

26 BONNYDALE ROCK N ROLL T42

Animal qualified through DNA to both Sire and Dam

AUS#: MBBPT042 ASA#: (4069572) Tattoo: T042
BD: 12/01/2022 Colour: Homo Black HPS: Polled
NLIS No: 982 123784795368

Black Simmental

Sire: BONNYDALE AUGUSTUS L84
BONNYDALE ROCK N ROLL
BONNYDALE GEORGIA J166

Dam: W/C WIDE TRACK 694Y
BONNYDALE JOSIE N83
ASR JOSIE W965

BW	\$ Index Values	
kg	\$API	\$TI
	147	83

	CE	BW	WW	YW	ADG	MCE	MILK	MWW	STAY	DOC	CW	YG	MB	BF	REA	Shr
EPDs	14.7	0.9	81.4	123	.26	6.1	22.7	63.3	19.1	13.5	37.7	-.50	.18	-.108	1.08	-.35
%	15	40	40	40	40	45	60	50	20	25	25	15	45	15	15	50
ACC	.42	.48	.43	.42	.42	.22	.15	.25	.30	.41	.39	.30	.34	.32	.36	.03

Traits Observed: CE, BW, WW, Doc, Genomics

Purchaser: Price:

27 BONNYDALE PROCLAMATION T85

Animal qualified through DNA to both Sire and Dam

AUS#: MBBPT085 ASA#: (4069974) Tattoo: T085
BD: 16/01/2022 Colour: Hetero Black HPS: Polled
NLIS No: 982 123779748730

Black Simmental

Sire: CCR COWBOY CUT 5048Z
WS PROCLAMATION E202
WS MISS SUGAR C4

Dam: RCR AUGUSTUS R54
BONNYDALE GRENADA R059
BONNYDALE GRENADA

BW	\$ Index Values	
kg	\$API	\$TI
	156	87

	CE	BW	WW	YW	ADG	MCE	MILK	MWW	STAY	DOC	CW	YG	MB	BF	REA	Shr
EPDs	12.1	0.9	83.4	128.2	.28	6	25.2	66.8	21.1	12.6	35.1	-.36	.33	-.085	.78	-.33
%	35	40	35	30	30	45	40	35	5	40	30	80	20	50	75	60
ACC	.46	.49	.47	.46	.46	.30	.24	.32	.35	.45	.43	.35	.40	.37	.42	.06

Traits Observed: CE, BW, WW, Doc, Genomics

Purchaser: Price:

28 BONNYDALE PROCLAMATION T59 Animal qualified through DNA to both Sire and Dam

AUS#: MBBPT059 ASA#: (4070013) Tattoo: T059
 BD: 13/01/2022 Colour: Homo Black HPS: Polled
 NLIS No: 982 123784795231

Black Simmental

CCR COWBOY CUT 5048Z
 Sire: WS PROCLAMATION E202
 WS MISS SUGAR C4

BONNYDALE JIM BEAM
 Dam: BONNYDALE MS DESI M147
 BONNYDALE MS DESI H206

BW	\$ Index Values	
kg	\$API	\$TI
	157	93

	CE	BW	WW	YW	ADG	MCE	MILK	MWW	STAY	DOC	CW	YG	MB	BF	REA	Shr
EPDs	11.7	2	94.9	147.7	.33	7	30	77.4	21.3	14.8	30.9	-.39	.30	-.081	.87	-.38
%	45	65	10	10	10	30	10	4	4	15	45	65	20	50	55	30
ACC	.44	.46	.45	.44	.44	.29	.23	.31	.35	.43	.42	.35	.40	.37	.41	.05

Traits Observed: CE, BW, WW, Doc, Genomics

Purchaser: Price:

29 BONNYDALE PROCLAMATION T44 Animal qualified through DNA to both Sire and Dam

AUS#: MBBPT044 ASA#: (4069884) Tattoo: T044
 BD: 12/01/2022 Colour: Homo Black HPS: Polled
 NLIS No: 982 123779748683

Black Simmental

CCR COWBOY CUT 5048Z
 Sire: WS PROCLAMATION E202
 WS MISS SUGAR C4

BONNYDALE NASHVILLE N70
 Dam: BONNYDALE MS DESI R111
 BONNYDALE MS DESI M136

BW	\$ Index Values	
kg	\$API	\$TI
	158	92

	CE	BW	WW	YW	ADG	MCE	MILK	MWW	STAY	DOC	CW	YG	MB	BF	REA	Shr
EPDs	14.7	0.4	90	140.3	.31	7.8	29.3	74.2	19.5	13.4	47.2	-.35	.29	-.066	1.05	-.35
%	15	30	15	15	15	20	15	10	15	30	10	80	25	85	20	50
ACC	.46	.50	.47	.46	.46	.28	.21	.31	.34	.44	.42	.33	.39	.36	.39	.06

Traits Observed: CE, BW, WW, Doc, Genomics

Purchaser: Price:

30 BONNYDALE ROCK N ROLL T189 Animal qualified through DNA to both Sire and Dam

AUS#: MBB3T189 ASA#: (4069793) Tattoo: T189
 BD: 24/01/2022 Colour: Homo Black HPS: Polled
 NLIS No: 982 123779748553

Black Simmental

BONNYDALE AUGUSTUS L84
 Sire: BONNYDALE ROCK N ROLL
 BONNYDALE GEORGIA J166

KOCH BIG TIMBER 685D
 Dam: BONNYDALE FINE ART Q20
 ASR FINE ART A3205

BW	\$ Index Values	
kg	\$API	\$TI
	155	92

	CE	BW	WW	YW	ADG	MCE	MILK	MWW	STAY	DOC	CW	YG	MB	BF	REA	Shr
EPDs	14.5	-0.3	91.1	147.9	.35	6.5	20	65.5	18.1	16	44.8	-.36	.24	-.093	.86	-.37
%	25	40	10	10	10	55	80	30	20	10	15	15	70	4	20	40
ACC	.43	.48	.44	.43	.43	.23	.16	.25	.32	.42	.39	.31	.35	.34	.36	.03

Traits Observed: CE, BW, WW, Doc, Genomics

Purchaser: Price:

31 BONNYDALE BROAD RANGE T56 Animal qualified through DNA to both Sire and Dam

AUS#: MBBPT056 ASA#: (4069769) Tattoo: T056
 BD: 13/01/2022 Colour: Homo Black HPS: Polled
 NLIS No: 982 123779748673

Black Simmental

CCR WIDE RANGE 9005A
 Sire: GIBBS 7382E BROAD RANGE
 SSF BLK LOUISE Y534

WS PROCLAMATION E202
 Dam: BONNYDALE LIL DESSI R021
 BONNYDALE LIL DESSI P15

BW	\$ Index Values	
kg	\$API	\$TI
	139	88

	CE	BW	WW	YW	ADG	MCE	MILK	MWW	STAY	DOC	CW	YG	MB	BF	REA	Shr
EPDs	12.1	-0.3	87.2	134.6	.30	7.4	25	68.6	14.1	12.9	42.9	-.34	.20	-.048	1.13	-.39
%	55	40	20	20	30	40	35	20	65	45	20	20	75	50	3	25
ACC	.47	.49	.47	.47	.47	.27	.18	.28	.32	.44	.42	.33	.38	.36	.39	.03

Traits Observed: CE, BW, WW, Doc, Genomics

Purchaser: Price:

32 BONNYDALE BIG TIMBER T241 Animal qualified through DNA to both Sire and Dam

AUS#: MBBPT241 ASA#: (4070035) Tattoo: T241
 BD: 1/02/2022 Colour: Homo Black HPS: Polled
 NLIS No: 982 123779748667

Black Simmental

KOCH BIG TIMBER 685D
 Sire: BONNYDALE BIG TIMBER Q36
 BONNYDALE JOSIE N154

BONNYDALE NASHVILLE N70
 Dam: BONNYDALE GOLDIE Q193
 BONNYDALE GOLDIE K140

BW	\$ Index Values	
kg	\$API	\$TI
	118	76

	CE	BW	WW	YW	ADG	MCE	MILK	MWW	STAY	DOC	CW	YG	MB	BF	REA	Shr
EPDs	7.8	4.2	85.3	130.3	.28	2.5	24.1	66.7	16.8	14.3	48.8	-.40	.18	-.104	.95	-.36
%	95	99	25	30	40	99	45	25	35	25	10	10	80	2	15	45
ACC	.42	.46	.43	.41	.41	.23	.14	.24	.30	.41	.37	.30	.34	.31	.35	.03

Traits Observed: CE, BW, WW, Doc, Genomics

Purchaser: Price:

33 BONNYDALE RAWHIDE T96 Animal qualified through DNA to both Sire and Dam

AUS#: MBBPT096 ASA#: (4069966) Tattoo: T096
 BD: 17/01/2022 Colour: Homo Black HPS: Polled
 NLIS No: 982 123784795453

Black Simmental

GIBBS 3009A ELEMENT
 Sire: BONNYDALE RAWHIDE
 ASR MS DESI D6238

LRS UNLIMITED 752A
 Dam: BONNYDALE LIL DESSI Q019
 BONNYDALE LIL DESSI J155

BW	\$ Index Values	
kg	\$API	\$TI
	120	82

	CE	BW	WW	YW	ADG	MCE	MILK	MWW	STAY	DOC	CW	YG	MB	BF	REA	Shr
EPDs	9.8	4.6	91.4	142.2	.32	5.4	27.5	73.1	13.5	11.7	66.9	-.47	.24	-.115	1.31	-.38
%	85	99	10	15	20	75	15	10	70	60	1	3	70	1	1	30
ACC	.42	.47	.44	.42	.42	.23	.16	.25	.32	.41	.38	.31	.35	.32	.37	.03

Traits Observed: CE, BW, WW, Doc, Genomics

Purchaser: Price:

NEW MF 7S

POWERFUL DESIGN TO INCREASE PRODUCTIVITY



NEW MF 7S | 145 – 210 HP

FULL OF TORQUE & POWERFULLY CAPABLE

AGCO Power 6.6 Litre, 6-Cylinder Engine, Delivering efficiency, fuel economy and meeting Tier 2 emissions.

DYNA-6 & DYNA-VT TRANSMISSIONS

Easy to use, efficient and comfortable.

2.88M WHEELBASE FOR THE PERFECT POWER

Optimum stability with high levels of ground traction.

SMART & SUSTAINABLE FARMING TECHNOLOGIES

Significant fuel savings, no overlap and less fatigue.

Bunbury Machinery have proudly partnered with Massey Ferguson supplying the South West Region, our customer service and aftersales service and support is what we have built our reputation on over the last 45 years.

For more information or to secure your new Massey Ferguson, contact the team at Bunbury Machinery.



Ben Johnston - 0429 684 778
 Darren Pulford - 0417 929 487
 Reg Betham - 0408 931 030

Cnr Picton Road & Forrest Avenue, Bunbury WA 6230

Real Machinery - Real Service - Real People

www.bunburymachinery.com.au

AVAILABLE TO ORDER NOW

BORN TO FARM



34 BONNYDALE SA POWERPLAY T400

Animal qualified through DNA to both Sire and Dam

AUS#: MBBDT400 ASA#: (4069653) Tattoo: T400
 BD: 5/01/2022 Colour: Black HPS: Polled
 NLIS No: 982 123784795339

3/8 Black Simmental 5/8 Angus

Sire: AYRVALE HERCULES H9
 TEXAS POWERPLAY P613
 TEXAS UNDINE H647
 Dam: BONNYDALE SA MATAURI N304
 BONNYDALE SA GEORGIA R465
 BONNYDALE SA GEORGIA M348

BW	\$ Index Values	
kg	\$API	\$TI
143		87

	CE	BW	WW	YW	ADG	MCE	MILK	MWW	STAY	DOC	CW	YG	MB	BF	REA	Shr
EPDs	17.1	-3.5	81.6	146.3	.40	10.2	25.8	66.5	13.5	13.8	50	-.15	.35	-.010	.92	
%	10	10	35	10	2	10	30	25	70	30	10	75	50	95	15	
ACC	.40	.43	.37	.36	.36	.15	.05	.15	.23	.35	.32	.25	.27	.24	.30	

Traits Observed: CE, BW, WW, Doc, Genomics

Purchaser: Price:

35 BONNYDALE SA MATAURI T515

Animal qualified through DNA to both Sire and Dam

AUS#: MBBDT515 ASA#: (4069585) Tattoo: T515
 BD: 9/02/2022 Colour: Hetero Black HPS: Polled
 NLIS No: 982 123779748581

1/2 Black Simmental 1/2 Angus

Sire: MATAURI RESOLUTION F030
 BONNYDALE SA MATAURI N304
 BONNYDALE GOLDIE L75
 Dam: BONNYDALE GOLDEN GATE
 BONNYDALE SA CHLOE G341
 BLUE WREN HILLS CHLOE C10

BW	\$ Index Values	
kg	\$API	\$TI
110		64

	CE	BW	WW	YW	ADG	MCE	MILK	MWW	STAY	DOC	CW	YG	MB	BF	REA	Shr
EPDs	3.8	3.7	74.6	113.9	.25	2.1	20.3	57.6	21.8	18.4	38.9	-.19	.04	-.035	.70	
%	99	99	60	60	65	99	80	70	2	3	30	65	95	65	50	
ACC	.39	.44	.40	.38	.38	.18	.14	.23	.24	.38	.34	.27	.31	.27	.33	

Traits Observed: CE, BW, WW, Doc, Genomics

Purchaser: Price:

36 BONNYDALE ROOSEVELT T495

Animal qualified through DNA to both Sire and Dam

AUS#: MBBPT495 ASA#: (4069613) Tattoo: T495
 BD: 3/02/2022 Colour: Homo Black HPS: Homo Polled
 NLIS No: 982 123779748647

Black Simmental

Sire: CCR COWBOY CUT 5048Z
 TJ ROOSEVELT 366E
 TJ 99A
 Dam: RCR AUGUSTUS R54
 BONNYDALE JOSIE N159
 BONNYDALE JOSSIE G204

BW	\$ Index Values	
kg	\$API	\$TI
136		87

	CE	BW	WW	YW	ADG	MCE	MILK	MWW	STAY	DOC	CW	YG	MB	BF	REA	Shr
EPDs	6.2	4.1	98.1	150.2	.33	1.8	19.3	68.3	19.3	11.8	46.2	-.41	.15	-.101	.97	-.29
%	95	95	4	4	10	99	85	25	20	50	10	55	50	15	35	85
ACC	.41	.46	.48	.47	.47	.27	.21	.29	.34	.46	.42	.34	.38	.35	.40	.02

Traits Observed: CE, BW, WW, Doc, Genomics

Purchaser: Price:



37 BONNYDALE BROAD RANGE T484 Animal qualified through DNA to both Sire and Dam

AUS#: MBBPT484 ASA#: (4069614) Tattoo: T484
 BD: 30/01/2022 Colour: Homo Black HPS: Homo Polled
 NLIS No: 982 123779748557

Black Simmental

CCR WIDE RANGE 9005A
 Sire: GIBBS 7382E BROAD RANGE
 SSF BLK LOUISE Y534

CCR COWBOY CUT 5048Z
 Dam: ASR MS DESI D6238
 ASR LITTLE DESSI Z213

BW	\$ Index Values	
kg	\$API	\$TI
	157	94

	CE	BW	WW	YW	ADG	MCE	MILK	MWW	STAY	DOC	CW	YG	MB	BF	REA	Shr
EPDs	16	0.6	93.6	147.1	.33	8.4	21.5	68.3	16.7	13.2	51.6	-.34	.32	-.050	1.22	
%	10	35	10	10	10	15	70	25	45	30	3	85	20	99	4	
ACC	.44	.47	.48	.47	.47	.27	.22	.30	.34	.47	.43	.35	.40	.38	.42	

Traits Observed: CE, BW, WW, Doc, Genomics

Purchaser: Price:

38 BONNYDALE SA POWERPLAY T429 Animal qualified through DNA to both Sire and Dam

AUS#: MBBDT429 ASA#: (4069847) Tattoo: T429
 BD: 14/01/2022 Colour: Black HPS: Polled
 NLIS No: 982 123784795329

1/2 Black Simmental 1/2 Angus

AYRVALE HERCULES H9
 Sire: TEXAS POWERPLAY P613
 TEXAS UNDINE H647

BONNYDALE BULLET P231
 Dam: BONNYDALE SA IPOD R496
 BONNYDALE SA IPOD N373

BW	\$ Index Values	
kg	\$API	\$TI
	133	74

	CE	BW	WW	YW	ADG	MCE	MILK	MWW	STAY	DOC	CW	YG	MB	BF	REA	Shr
EPDs	14.8	-3.3	64.7	102.4	.24	8.2	25.3	57.6	16.4	11.5	28.9	-.22	.31	-.032	.70	
%	25	10	90	85	70	30	30	70	40	65	65	55	55	65	50	
ACC	.39	.43	.38	.37	.37	.15	.05	.16	.23	.34	.31	.25	.27	.24	.30	

Traits Observed: CE, BW, WW, Doc, Genomics

Purchaser: Price:

39 BONNYDALE SA POWERPLAY T415 Animal qualified through DNA to both Sire and Dam

AUS#: MBBDT415 ASA#: (4069802) Tattoo: T415
 BD: 9/01/2022 Colour: Black HPS: Polled
 NLIS No: 982 123784795334

3/8 Black Simmental 5/8 Angus

AYRVALE HERCULES H9
 Sire: TEXAS POWERPLAY P613
 TEXAS UNDINE H647

BONNYDALE PATRIOT P219
 Dam: BONNYDALE SA ISLE R534
 BONNYDALE SA ISLE M375

BW	\$ Index Values	
kg	\$API	\$TI
	109	80

	CE	BW	WW	YW	ADG	MCE	MILK	MWW	STAY	DOC	CW	YG	MB	BF	REA	Shr
EPDs	12.2	0.1	88.9	145.2	.35	7.3	24.3	68.7	8.6	7.9	52.4	-.26	.12	-.041	1.04	
%	55	50	15	10	10	40	40	20	95	95	10	45	90	50	10	
ACC	.39	.43	.38	.37	.37	.15	.05	.16	.23	.35	.31	.25	.29	.25	.30	

Traits Observed: CE, BW, WW, Doc, Genomics

Purchaser: Price:

40 BONNYDALE SA LEGEND T471 Animal qualified through DNA to both Sire and Dam

AUS#: MBBDT471 ASA#: (4069840) Tattoo: T471
 BD: 27/01/2022 Colour: Black HPS: Polled
 NLIS No: 982 123784795415

5/8 Black Simmental 3/8 Angus

CLUNIE RANGE LEGEND L348
 Sire: BONNYDALE SA LEGEND Q331
 BONNYDALE JOSIE N142

BONNYDALE SA ELEVATOR L389
 Dam: BONNYDALE SA INNES P379
 BONNYDALE SA INNESVALE K308

BW	\$ Index Values	
kg	\$API	\$TI
	104	74

	CE	BW	WW	YW	ADG	MCE	MILK	MWW	STAY	DOC	CW	YG	MB	BF	REA	Shr
EPDs	-0.5	7.1	89.9	137.5	.30	-1.1	23.6	68.5	14.9	14.8	45	-.17	.28	-.038	.69	
%	99	99	15	20	30	99	45	20	55	20	15	70	60	65	50	
ACC	.40	.46	.39	.38	.38	.16	.09	.20	.26	.37	.34	.26	.28	.27	.31	

Traits Observed: CE, BW, WW, Doc, Genomics

Purchaser: Price:

41 BONNYDALE SA PATRIOT T467 Animal qualified through DNA to both Sire and Dam

AUS#: MBBDT467 ASA#: (4069590) Tattoo: T467
 BD: 26/01/2022 Colour: Homo Black HPS: Polled
 NLIS No: 982 123779748660

3/4 Black Simmental 1/4 Angus

GIBBS 3009A ELEMENT
 Sire: BONNYDALE PATRIOT P219
 ASR BLACK SCAMP Z2194

HC HUMMER 12M
 Dam: BONNYDALE SA REBECCA G320
 STRATHTAY REBECCA C160

BW	\$ Index Values	
kg	\$API	\$TI
	116	78

	CE	BW	WW	YW	ADG	MCE	MILK	MWW	STAY	DOC	CW	YG	MB	BF	REA	Shr
EPDs	16.6	0.6	85.4	124.6	.24	9.4	29.5	72.1	11.5	12.6	53.9	-.36	.04	-.091	1.00	-.28
%	10	60	25	40	70	15	10	10	85	45	5	15	95	4	10	90
ACC	.41	.46	.43	.42	.42	.21	.15	.25	.29	.40	.36	.30	.34	.30	.37	.04

Traits Observed: CE, BW, WW, Doc, Genomics

Purchaser: Price:

42 BONNYDALE QUAKER T295 Animal qualified through DNA to both Sire and Dam

AUS#: MBBPT295 ASA#: (4069857) Tattoo: T295
 BD: 14/02/2022 Colour: Homo Black HPS: Polled
 NLIS No: 982 123771306224

Black Simmental

OVAL F ALL TIME A322
 Sire: BONNYDALE QUAKER Q99
 ASR BLACK MIRANDA Y198

BONNYDALE AUGUSTUS L84
 Dam: BONNYDALE JENNY P81
 BONNYDALE JENNY K192

BW	\$ Index Values	
kg	\$API	\$TI
	118	69

	CE	BW	WW	YW	ADG	MCE	MILK	MWW	STAY	DOC	CW	YG	MB	BF	REA	Shr
EPDs	9.9	2.5	77.1	112.4	.22	4.8	23.7	62.2	20.2	13.3	38.9	-.42	.03	-.102	.89	-.34
%	85	90	50	65	80	85	45	50	10	40	30	10	99	2	20	60
ACC	.42	.47	.45	.44	.44	.21	.15	.26	.30	.42	.38	.30	.35	.31	.35	.02

Traits Observed: CE, BW, WW, Doc, Genomics

Purchaser: Price:

Local insurance brokers you can trust



5A Fairbairn Road Busselton WA 6280
1 Preston Street Como WA 6152
P: 0418 563 599

Phoenix Insurance Brokers Pty Ltd has been providing insurance broking services to Western Australian businesses since 1989. Over time, our personalised service has made us one of the state's largest and most trusted local brokers. While insurance is our business, our philosophy is about people and building strong, solid relationships with them. We partner with our clients to achieve the best possible outcomes, for them, their families and their businesses.

For a no nonsense approach to insurance, call Murray, Madde or Ashton.



Value for money & time saved

- Finding you the right insurance products at the right price is what we specialise in. So you can get on with doing what really matters.

Peace of mind

- From understanding your business, to helping you through the claims process, we are on your side.

Service

- You get a personalised level of service from a dedicated local insurance expert. Your broker is your primary point of contact on insurance matters.

Expert advice

- We are your insurance expert, partnering with you every step of the way to ensure you and your business are protected.
- We are the professionals you will want on your team when things get tough, after all it's when an incident or claim occurs that the insurance you bought and advice you sought will be tested.

Full suite of insurance services

Phoenix can assist with all general insurance including:

- Assessing and reviewing your insurance;
- Full claims management, including injury management;
- Arranging premium funding;
- Risk management; and
- Contractual liability review.

We're a Steadfast Broker

Using Phoenix Insurance Brokers Pty Ltd gives you access to economies of scale and insurance packages specially developed through our alliance with the Steadfast Group.



A Steadfast broker works for you, not the insurer. We can take the time to understand your business and the risks you face. With a Steadfast broker, you can have access to policies from more than 150 national and international insurers – so you can feel confident you have all the cover you need.

For professional, friendly, experienced service over an obligation free discussion, please contact Murray, Madde and Ashton.



Murray Johnson

M: 0418 563 599

E: mjohnson@phoenixins.com.au



Madde Piraino

M: 0409 116 050

E: mpiraino@phoenixins.com.au



Ashton Roberts

M: 0488 084 946

E: aroberts@phoenixins.com.au



43 BONNYDALE RAWHIDE T195 Animal qualified through DNA to both Sire and Dam

AUS#: MBBPT195 ASA#: (4069555) Tattoo: T195
 BD: 17/01/2022 Colour: Homo Black HPS: Polled
 NLIS No: 982 123784795313

Black Simmental

Sire: GIBBS 3009A ELEMENT
 BONNYDALE RAWHIDE
 ASR MS DESI D6238

Dam: BONNYDALE WIDE TRACK L11
 BONNYDALE GEORGIA N97
 BONNYDALE GEORGIA G249

BW	\$ Index Values	
kg	\$API	\$TI
	134	74

	CE	BW	WW	YW	ADG	MCE	MILK	MWW	STAY	DOC	CW	YG	MB	BF	REA	Shr
EPDs	13.4	1.4	72.4	113.3	.26	7	23.7	59.9	18.6	12.6	43.1	-.40	.07	-.091	.98	-.36
%	20	50	75	60	40	30	50	65	25	40	15	60	70	30	30	40
ACC	.41	.47	.43	.42	.42	.19	.13	.23	.29	.39	.35	.29	.33	.29	.35	.06

Traits Observed: CE, BW, WW, Doc, Genomics

Purchaser: Price:

44 BONNYDALE RHINO T282 Animal qualified through DNA to both Sire and Dam

AUS#: MBB3T282 ASA#: (4069682) Tattoo: T282
 BD: 8/02/2022 Colour: Homo Black HPS: Polled
 NLIS No: 982 123779748598

Black Simmental

Sire: TNT TANKER U263
 BONNYDALE RHINO
 BONNYDALE BLACK MIRANDA L127

Dam: KOCH BIG TIMBER 685D
 BONNYDALE LIL DESSI Q27
 BONNYDALE LIL DESSI N166

BW	\$ Index Values	
kg	\$API	\$TI
	119	74

	CE	BW	WW	YW	ADG	MCE	MILK	MWW	STAY	DOC	CW	YG	MB	BF	REA	Shr
EPDs	5.6	4.1	85.1	128.7	.27	3.4	24.9	67.4	19.7	11.1	28.3	-.43	-.05	-.077	.98	-.35
%	99	99	25	30	50	95	35	25	10	70	65	5	99	15	10	50
ACC	.43	.47	.43	.42	.42	.23	.15	.25	.32	.41	.38	.31	.34	.33	.36	.02

Traits Observed: CE, BW, WW, Doc, Genomics

Purchaser: Price:

45 BONNYDALE QUAKER T244 Animal qualified through DNA to both Sire and Dam

AUS#: MBB3T244 ASA#: (4069659) Tattoo: T244
 BD: 1/02/2022 Colour: Homo Black HPS: Polled
 NLIS No: 982 123771306231

Black Simmental

Sire: OVAL F ALL TIME A322
 BONNYDALE QUAKER Q99
 ASR BLACK MIRANDA Y198

Dam: KOCH BIG TIMBER 685D
 BONNYDALE JOSIE Q109
 BONNYDALE JOSIE N68

BW	\$ Index Values	
kg	\$API	\$TI
	129	76

	CE	BW	WW	YW	ADG	MCE	MILK	MWW	STAY	DOC	CW	YG	MB	BF	REA	Shr
EPDs	8.7	1.9	80.9	126.3	.28	3.7	24.6	65.1	21.1	15.5	23	-.43	.15	-.095	.79	-.34
%	90	85	35	35	40	95	40	35	4	15	80	5	85	4	30	60
ACC	.43	.47	.45	.43	.43	.23	.16	.26	.32	.42	.40	.31	.36	.33	.36	.04

Traits Observed: CE, BW, WW, Doc, Genomics

Purchaser: Price:

46 BONNYDALE BROAD RANGE T111 Animal qualified through DNA to both Sire and Dam

AUS#: MBBPT111 ASA#: (4069955) Tattoo: T111
 BD: 19/01/2022 Colour: Homo Black HPS: Homo Polled
 NLIS No: 982 123779748554

Black Simmental

Sire: CCR WIDE RANGE 9005A
 GIBBS 7382E BROAD RANGE
 SSF BLK LOUISE Y534

Dam: CCR COWBOY CUT 5048Z
 ASR MS DESI D6238
 ASR LITTLE DESSI Z213

BW	\$ Index Values	
kg	\$API	\$TI
	147	84

	CE	BW	WW	YW	ADG	MCE	MILK	MWW	STAY	DOC	CW	YG	MB	BF	REA	Shr
EPDs	15.7	-1.3	83.9	130.6	.29	8.3	21.5	63.4	19.2	14.3	44.7	-.38	.06	-.061	1.16	-.42
%	10	10	30	25	25	15	70	50	20	20	10	70	70	85	10	10
ACC	.44	.47	.49	.48	.48	.27	.22	.30	.34	.47	.43	.36	.41	.39	.42	.04

Traits Observed: CE, BW, WW, Doc, Genomics

Purchaser: Price:

47 BONNYDALE BROAD RANGE T17 Animal qualified through DNA to both Sire and Dam

AUS#: MBBPT017 ASA#: (4069754) Tattoo: T017
 BD: 7/01/2022 Colour: Hetero Black HPS: Polled
 NLIS No: 982 123779748659

Black Simmental

Sire: CCR WIDE RANGE 9005A
 GIBBS 7382E BROAD RANGE
 SSF BLK LOUISE Y534

Dam: BONNYDALE NASHVILLE N70
 BONNYDALE SCAMP R161
 BONNYDALE SCAMP J100

BW	\$ Index Values	
kg	\$API	\$TI
	144	82

	CE	BW	WW	YW	ADG	MCE	MILK	MWW	STAY	DOC	CW	YG	MB	BF	REA	Shr
EPDs	15.7	-2.6	75.6	121.7	.29	10.1	19.7	57.5	17.1	16.8	40.6	-.43	.09	-.068	1.21	-.32
%	10	3	65	40	25	3	85	80	40	4	15	45	65	85	5	70
ACC	.45	.49	.46	.45	.45	.26	.17	.27	.31	.43	.39	.32	.37	.35	.38	.03

Traits Observed: CE, BW, WW, Doc, Genomics

Purchaser: Price:

48 BONNYDALE BROAD RANGE T182 Animal qualified through DNA to both Sire and Dam

AUS#: MBBPT182 ASA#: (4069512) Tattoo: T182
 BD: 24/01/2022 Colour: Homo Black HPS: Homo Polled
 NLIS No: 982 123779748546

Black Simmental

Sire: CCR WIDE RANGE 9005A
 GIBBS 7382E BROAD RANGE
 SSF BLK LOUISE Y534

Dam: CCR COWBOY CUT 5048Z
 ASR MS DESI D6238
 ASR LITTLE DESSI Z213

BW	\$ Index Values	
kg	\$API	\$TI
	156	90

	CE	BW	WW	YW	ADG	MCE	MILK	MWW	STAY	DOC	CW	YG	MB	BF	REA	Shr
EPDs	17.7	-1.3	84.3	135.5	.32	9.6	21.5	63.6	16.2	13.9	32	-.24	.29	-.023	.86	-.42
%	2	10	30	20	10	4	70	50	50	25	40	99	25	99	60	10
ACC	.44	.47	.48	.47	.47	.27	.22	.30	.34	.47	.43	.35	.41	.37	.42	.04

Traits Observed: CE, BW, WW, Doc, Genomics

Purchaser: Price:



49 BONNYDALE ROCK N ROLL T205 Animal qualified through DNA to both Sire and Dam

AUS#: MBBPT205 ASA#: (4069515) Tattoo: T205
 BD: 27/01/2022 Colour: Hetero Black HPS: Polled
 NLIS No: 982 123784795303

Black Simmental

Sire: BONNYDALE AUGUSTUS L84
 BONNYDALE ROCK N ROLL
 BONNYDALE GEORGIA J166

Dam: W/C WIDE TRACK 694Y
 BONNYDALE FINE ART N21
 ASR FINE ART L132

BW	\$ Index Values	
kg	\$API	\$TI
	139	79

	CE	BW	WW	YW	ADG	MCE	MILK	MWW	STAY	DOC	CW	YG	MB	BF	REA	Shr
EPDs	14.4	-0.2	74.6	119.8	.28	5.6	20.4	57.6	17	13.2	30	-.38	.13	-.085	.80	-.32
%	15	20	70	45	30	55	80	75	45	30	50	70	55	50	70	70
ACC	.41	.47	.43	.42	.42	.21	.15	.25	.31	.41	.37	.30	.34	.31	.35	.03

Traits Observed: CE, BW, WW, Doc, Genomics

Purchaser: Price:

50 BONNYDALE DIVIDEND T107 Animal qualified through DNA to both Sire and Dam

AUS#: MBBPT107 ASA#: (4069877) Tattoo: T107
 BD: 18/01/2022 Colour: Black HPS: Polled
 NLIS No: 982 123784795254

Black Simmental

Sire: CLRS DIVIDEND 405D
 BONNYDALE DIVIDEND R43
 ASR LITTLE DESI D6273

Dam: RCR AUGUSTUS R54
 BONNYDALE GUAVA L86
 BONNYDALE GUAVA F218

BW	\$ Index Values	
kg	\$API	\$TI
	137	86

	CE	BW	WW	YW	ADG	MCE	MILK	MWW	STAY	DOC	CW	YG	MB	BF	REA	Shr
EPDs	11	4.5	90.1	140.5	.32	4.9	22.3	67.3	14.8	17.3	41.2	-.36	.29	-.107	.69	-.46
%	55	99	15	15	10	70	65	30	65	3	15	80	25	15	90	3
ACC	.42	.47	.44	.43	.43	.22	.15	.26	.30	.41	.38	.30	.35	.33	.35	.03

Traits Observed: CE, BW, WW, Doc, Genomics

Purchaser: Price:

51 BONNYDALE ROOSEVELT T151 Animal qualified through DNA to both Sire and Dam

AUS#: MBBPT151 ASA#: (4069720) Tattoo: T151
 BD: 22/01/2022 Colour: Hetero Black HPS: Polled
 NLIS No: 982 123784795222

Black Simmental

Sire: CCR COWBOY CUT 5048Z
 TJ ROOSEVELT 366E
 TJ 99A

Dam: ES DAKOTA NK68
 BONNYDALE LIL DESSI G227
 BONNYDALE LIL DESSI D202

BW	\$ Index Values	
kg	\$API	\$TI
	134	72

	CE	BW	WW	YW	ADG	MCE	MILK	MWW	STAY	DOC	CW	YG	MB	BF	REA	Shr
EPDs	12.5	0.9	71.3	107.1	.22	6.1	23	58.6	21.4	15.4	22.7	-.44	.00	-.072	1.00	-.36
%	30	40	80	75	70	45	55	70	4	10	75	40	85	70	25	40
ACC	.45	.51	.48	.47	.47	.28	.23	.32	.33	.45	.41	.34	.40	.36	.41	.05

Traits Observed: CE, BW, WW, Doc, Genomics

Purchaser: Price:

52 BONNYDALE SA MATAURI T461 Animal qualified through DNA to both Sire and Dam

AUS#: MBBDT461 ASA#: (4069620) Tattoo: T461
 BD: 25/01/2022 Colour: Black HPS: Polled
 NLIS No: 982 123779748547

5/8 Black Simmental 3/8 Angus

Sire: MATAURI RESOLUTION F030
 BONNYDALE SA MATAURI N304
 BONNYDALE GOLDIE L75

Dam: BONNYDALE SA TANK K299
 BONNYDALE SA LYDIA M352
 BONNYDALE SA LYDIA G327

BW	\$ Index Values	
kg	\$API	\$TI
	93	66

	CE	BW	WW	YW	ADG	MCE	MILK	MWW	STAY	DOC	CW	YG	MB	BF	REA	Shr
EPDs	1.5	6.6	87.3	139.8	.33	2	21.2	64.8	16.5	18.2	38.8	-.29	-.06	-.071	.73	
%	99	99	20	15	15	99	70	35	35	3	30	35	99	15	40	
ACC	.40	.46	.41	.40	.40	.20	.14	.24	.28	.40	.37	.29	.30	.28	.36	

Traits Observed: CE, BW, WW, Doc, Genomics

Purchaser: Price:

53 BONNYDALE SA PATRIOT T524 Animal qualified through DNA to both Sire and Dam

AUS#: MBBDT524 ASA#: (4069608) Tattoo: T524
 BD: 12/02/2022 Colour: Homo Black HPS: Polled
 NLIS No: 982 123779748655

7/8 Black Simmental 18 Angus

Sire: GIBBS 3009A ELEMENT
 BONNYDALE PATRIOT P219
 ASR BLACK SCAMP Z2194

Dam: TNT TANKER U263
 BONNYDALE SA PRINCESS M301
 BONNYDALE SA IVEY

BW	\$ Index Values	
kg	\$API	\$TI
	115	81

	CE	BW	WW	YW	ADG	MCE	MILK	MWW	STAY	DOC	CW	YG	MB	BF	REA	Shr
EPDs	5.9	3.5	93.6	138.7	.28	5.6	25.9	72.7	14.8	13.8	51.9	-.54	.16	-.119	1.30	-.30
%	99	99	10	15	40	75	30	10	55	30	10	1	85	1	1	80
ACC	.41	.46	.43	.42	.42	.23	.16	.25	.31	.41	.39	.30	.35	.31	.36	.04

Traits Observed: CE, BW, WW, Doc, Genomics

Purchaser: Price:

54 BONNYDALE SA RESERVE T548 Animal qualified through DNA to both Sire and Dam

AUS#: MBBDT548 ASA#: (4069636) Tattoo: T548
 BD: 27/02/2022 Colour: Homo Black HPS: Polled
 NLIS No: 982 123761557697

3/4 Black Simmental 1/4 Angus

Sire: ARDCAIRNIE L154
 BONNYDALE SA RESERVE R489
 BONNYDALE GATEWAY P142

Dam: BONNYDALE PRIME CUT P220
 BONNYDALE GUAVA R236
 BONNYDALE GUAVA L74

BW	\$ Index Values	
kg	\$API	\$TI
	140	83

	CE	BW	WW	YW	ADG	MCE	MILK	MWW	STAY	DOC	CW	YG	MB	BF	REA	Shr
EPDs	13.6	1.6	86.6	134.8	.30	6.8	25.7	69	18.8	16.4	42.3	-.21	.30	-.040	.78	
%	35	80	20	20	30	50	30	20	15	10	20	60	55	65	35	
ACC	.39	.44	.39	.38	.38	.18	.10	.20	.26	.37	.33	.27	.30	.27	.32	

Traits Observed: CE, BW, WW, Doc, Genomics

Purchaser: Price:

22 Years Providing Product & Services at the Grass Roots to Farmers



Advanced Nutrition * Advanced Outcomes

Ferti-Tech have over two decades of experience in Broadacre, Pasture, Horticulture, Viticulture and Dairy. We have developed products and programs that farmers are using on farm, by incorporating the synergy of Carbon, Liquids and additional Nutrition with Standard Fertilisers. Our product ranges from Reactive Carbon Granules, inoculants, Carbon Composites/Coatings, Soil Amendments, Nutritional Seed Dressings, Liquid Inject, Soil Drenches, Foliars, Animal Nutritional Support Inputs and much more, gives farmers versatility in their program to suit their machinery and current seasonal conditions. We offer an immense diversity of knowledge to enhance Soil Structure, by then understanding HOW to sequence the use of products that are "Complexed" in the correct form that modern Agriculture requires.

THINKING ABOUT 2022? THINK W.U.E & SMARTER SOIL TESTING TOO!

Contact Ferti-Tech Head Office 08 9725 6877 or email info@fertitech.com to arrange a visit and to get some Soil Test Kits Posted

ISN'T YOUR SOIL YOUR MOST IMPORTANT ASSET? WOULDN'T YOU LIKE TO KNOW HOW TO IMPROVE NUTRIENT FLOW & WATER USE? We provide a detailed insight into any yield limiting factors AND cost-effective ways to address them.

SPECIAL OFFER \$30 OFF FULL RANGE OF SOIL TESTS* and REPORTS

*Conditions Apply - Maximum 3 Soil Tests per Property. Cost per Test Starts From \$99+GST (Normally \$129+GST) Offer Ends 28th Feb. 2022.

GET THE SOIL ANALYSIS THAT NAILS THE Paddock Issues AND REALLY MAKES SENSE! Our Soil Tests give you an instant insight into Soil Chemistry, Soil Fertility and will provide a Solid Pathway to a Regenerating Productivity.

55 BONNYDALE BROAD RANGE T9

Animal qualified through DNA to both Sire and Dam

AUS#: MBBPT009 ASA#: (4070014) Tattoo: T009
 BD: 5/01/2022 Colour: Homo Black HPS: Polled
 NLIS No: 982 123784795425

Black Simmental

Sire: GIBBS 7382E BROAD RANGE
 SSF BLK LOUISE Y534

Dam: BONNYDALE JIM BEAM
 BONNYDALE GEORGIA M18
 BONNYDALE GEORGIA H209

BW	\$ Index Values	
kg	\$API	\$TI
149		90

	CE	BW	WW	YW	ADG	MCE	MILK	MWW	STAY	DOC	CW	YG	MB	BF	REA	Shr
EPDs	15.9	-0.9	89.8	147.7	.36	8.5	22.9	67.8	15.3	18	37.6	-.34	.17	-.060	.97	-.42
%	10	15	15	10	3	10	60	30	60	2	25	85	45	95	35	10
ACC	.42	.45	.43	.43	.43	.26	.19	.27	.32	.41	.40	.33	.40	.36	.40	.02

Traits Observed: CE, BW, WW, Doc, Genomics

Purchaser: Price:

56 BONNYDALE BROAD RANGE T11

Animal qualified through DNA to both Sire and Dam

AUS#: MBBPT011 ASA#: (4070020) Tattoo: T011
 BD: 5/01/2022 Colour: Homo Black HPS: Polled
 NLIS No: 982 123784795266

Black Simmental

Sire: GIBBS 7382E BROAD RANGE
 SSF BLK LOUISE Y534

Dam: TRIPLE C BETTIS S72J
 BONNYDALE GEORGIA J128
 BONNYDALE GEORGIA

BW	\$ Index Values	
kg	\$API	\$TI
135		76

	CE	BW	WW	YW	ADG	MCE	MILK	MWW	STAY	DOC	CW	YG	MB	BF	REA	Shr
EPDs	16.6	-1.5	72.6	113.4	.26	9.3	24.1	60.4	16.6	11.6	30.7	-.38	-.01	-.054	1.05	-.41
%	4	10	75	60	40	10	50	65	50	55	45	70	90	95	20	15
ACC	.44	.47	.46	.46	.46	.28	.21	.28	.34	.43	.42	.34	.41	.37	.41	.02

Traits Observed: CE, BW, WW, Doc, Genomics

Purchaser: Price:

57 BONNYDALE RAWHIDE T106

Animal qualified through DNA to both Sire and Dam

AUS#: MBBPT106 ASA#: (4069744) Tattoo: T106
 BD: 18/01/2022 Colour: Homo Black HPS: Polled
 NLIS No: 982 123771306203

Black Simmental

Sire: GIBBS 3009A ELEMENT
 BONNYDALE RAWHIDE
 ASR MS DESI D6238

Dam: LRS UNLIMITED 752A
 BONNYDALE FINE ART P82
 ASR FINE ART A3205

BW	\$ Index Values	
kg	\$API	\$TI
137		79

	CE	BW	WW	YW	ADG	MCE	MILK	MWW	STAY	DOC	CW	YG	MB	BF	REA	Shr
EPDs	14.2	-0.9	77.3	127	.31	7.5	24.9	63.5	17.8	11.2	52.1	-.46	.20	-.110	1.12	-.32
%	30	30	50	35	25	40	35	40	25	70	10	3	75	2	3	70
ACC	.42	.47	.44	.43	.43	.21	.14	.24	.31	.41	.37	.30	.34	.31	.35	.02

Traits Observed: CE, BW, WW, Doc, Genomics

Purchaser: Price:



58 BONNYDALE RHINO T257 Animal qualified through DNA to both Sire and Dam

AUS#: MBBPT257 ASA#: (4069792) Tattoo: T257
 BD: 3/02/2022 Colour: Homo Black HPS: Polled
 NLIS No: 982 123779748544

Black Simmental

Sire: BONNYDALE RHINO
 BONNYDALE BLACK MIRANDA L127

Dam: BONNYDALE AUGUSTUS L84
 BONNYDALE GEORGIA P118
 BONNYDALE GEORGIA L63

BW	\$ Index Values	
kg	\$API	\$TI
	116	70

	CE	BW	WW	YW	ADG	MCE	MILK	MWW	STAY	DOC	CW	YG	MB	BF	REA	Shr
EPDs	5.5	3.2	86.1	135.2	.31	1.6	19	62	23.7	11.3	47.9	-.48	-.12	-.116	1.09	-.32
%	99	95	20	20	25	99	85	50	1	65	10	2	99	1	4	70
ACC	.43	.48	.44	.43	.43	.22	.16	.26	.30	.41	.38	.30	.33	.31	.36	.02

Traits Observed: CE, BW, WW, Doc, Genomics

Purchaser: Price:

59 BONNYDALE REVENUE T292 Animal qualified through DNA to both Sire and Dam

AUS#: MBBPT292 ASA#: (4069604) Tattoo: T292
 BD: 11/02/2022 Colour: Homo Black HPS: Polled
 NLIS No: 982 123784795280

Black Simmental

Sire: BONNYDALE REVENUE
 CLRS DIVIDEND 405D
 ASR LITTLE DESI D6273

Dam: BONNYDALE LOAD TRACK
 BONNYDALE BLACK CARLENE N157
 BONNYDALE CARLENE K185

BW	\$ Index Values	
kg	\$API	\$TI
	107	83

	CE	BW	WW	YW	ADG	MCE	MILK	MWW	STAY	DOC	CW	YG	MB	BF	REA	Shr
EPDs	11	4.2	104.3	157.9	.34	4.9	24.4	76.5	10.8	18.3	38.1	-.55	-.22	-.122	1.15	-.41
%	55	95	1	2	5	70	45	5	95	2	20	4	99	2	10	15
ACC	.38	.43	.39	.37	.37	.14	.07	.18	.25	.36	.32	.26	.30	.28	.32	.03

Traits Observed: CE, BW, WW, Doc, Genomics

Purchaser: Price:

60 BONNYDALE JUSTICE T208 Animal qualified through DNA to both Sire and Dam

AUS#: MBBPT208 ASA#: (4069628) Tattoo: T208
 BD: 27/01/2022 Colour: Homo Black HPS: Polled
 NLIS No: 982 123784795396

Black Simmental

Sire: BONNYDALE JUSTICE P105
 BBS TRUE JUSTICE B10
 ASR MS CAMILLE W967

Dam: BONNYDALE LIL DESSI M20
 ASR AUGUSTUS Z2165
 BONNYDALE LIL DESSI K186

BW	\$ Index Values	
kg	\$API	\$TI
	133	76

	CE	BW	WW	YW	ADG	MCE	MILK	MWW	STAY	DOC	CW	YG	MB	BF	REA	Shr
EPDs	14.3	0.3	83.9	124.1	.25	9.3	25.6	67.5	22.6	14.8	31.7	-.55	-.03	-.114	1.10	-.34
%	30	55	25	40	65	15	30	25	2	20	55	1	99	1	3	60
ACC	.44	.48	.44	.43	.43	.24	.17	.28	.31	.42	.39	.31	.35	.32	.39	.04

Traits Observed: CE, BW, WW, Doc, Genomics

Purchaser: Price:

61 BONNYDALE ROCK N ROLL T154 Animal qualified through DNA to both Sire and Dam

AUS#: MBBPT154 ASA#: (4069609) Tattoo: T154
 BD: 22/01/2022 Colour: Homo Black HPS: Polled
 NLIS No: 982 123784795371

Black Simmental

Sire: BONNYDALE ROCK N ROLL
 BONNYDALE AUGUSTUS L84
 BONNYDALE GEORGIA J166

Dam: BONNYDALE LOAD TRACK
 BONNYDALE LIL DESSI N192
 BONNYDALE LIL DESSI K186

BW	\$ Index Values	
kg	\$API	\$TI
	147	87

	CE	BW	WW	YW	ADG	MCE	MILK	MWW	STAY	DOC	CW	YG	MB	BF	REA	Shr
EPDs	13	1.5	90.8	142.1	.32	6.2	27.3	72.6	19.5	12.8	52.8	-.48	.13	-.095	1.32	-.33
%	25	55	15	10	10	45	25	15	15	35	2	20	55	30	2	60
ACC	.42	.47	.42	.40	.40	.20	.14	.24	.29	.40	.36	.29	.33	.30	.34	.01

Traits Observed: CE, BW, WW, Doc, Genomics

Purchaser: Price:

62 BONNYDALE RAWHIDE T254 Animal qualified through DNA to both Sire and Dam

AUS#: MBBPT254 ASA#: (4069956) Tattoo: T254
 BD: 3/02/2022 Colour: Homo Black HPS: Polled
 NLIS No: 982 123779748599

Black Simmental

Sire: BONNYDALE RAWHIDE
 GIBBS 3009A ELEMENT
 ASR MS DESI D6238

Dam: BONNYDALE NASHVILLE N70
 BONNYDALE SCAMP Q024
 BONNYDALE SCAMP J100

BW	\$ Index Values	
kg	\$API	\$TI
	110	66

	CE	BW	WW	YW	ADG	MCE	MILK	MWW	STAY	DOC	CW	YG	MB	BF	REA	Shr
EPDs	9	4.5	75.7	119	.27	5.9	20.8	58.7	17.9	9.5	46	-.48	.02	-.103	1.16	-.35
%	90	99	55	50	50	70	75	65	25	85	15	2	99	2	2	50
ACC	.41	.47	.43	.41	.41	.21	.14	.24	.29	.40	.38	.30	.34	.32	.36	.03

Traits Observed: CE, BW, WW, Doc, Genomics

Purchaser: Price:

63 BONNYDALE REVENUE T90 Animal qualified through DNA to both Sire and Dam

AUS#: MBBPT090 ASA#: (4069662) Tattoo: T090
 BD: 17/01/2022 Colour: Homo Black HPS: Polled
 NLIS No: 982 123771306212

Black Simmental

Sire: BONNYDALE REVENUE
 CLRS DIVIDEND 405D
 ASR LITTLE DESI D6273

Dam: BONNYDALE FINE ART Q48
 BONNYDALE NUKARA
 BONNYDALE FINE ART N46

BW	\$ Index Values	
kg	\$API	\$TI
	124	79

	CE	BW	WW	YW	ADG	MCE	MILK	MWW	STAY	DOC	CW	YG	MB	BF	REA	Shr
EPDs	13	1.5	85.5	133.3	.30	5.2	25.3	68	15.7	19.5	29.2	-.40	.12	-.078	.90	-.44
%	45	75	25	25	30	80	30	20	45	2	60	10	90	15	15	10
ACC	.42	.46	.42	.41	.41	.20	.13	.23	.29	.40	.36	.28	.33	.29	.33	.04

Traits Observed: CE, BW, WW, Doc, Genomics

Purchaser: Price:



ENGINEERED BY AUSTRALIANS FOR AUSTRALIANS

Introducing the AUSMIX TMR Feed Mixers to Bunbury Machinery as a part of our existing Feedlot range. AUSMIX offer both Single and Twin Screws mixers, ranging from 8m³ to 32m³.

The AUSMIX Twin Screw models consist of four models ranging from 20m³ and 32m³ capacity respectively. The Twin Screw models come with two Fibre-X augers with integrated razor-sharp knives made from heat-treated tungsten carbide. With its larger tub capacity and bigger auger coverage, it will correctly process fibre, straw, silage, hay, forage, grain or heavy wet rations to produce a perfectly-mixed TMR that will give your livestock the nutritional edge in terms of productivity and excellent herd health.

Aside from holding more fodder, this Twin Screw Mixer also boasts a faster mixing time and can quickly chop down and process large hay and silage bales. The floors and augers boast heavy-duty steel plates with a thickness of 20mm while the tub boasts a 10mm thick wall to ensure long-lasting performance even against the most adverse conditions.

The AUSMIX comes equipped with an Italian-built two-speed gear and planetary gearboxes that are made from premium steel so it can easily handle heavy loads for long periods with ease.

For more information, contact the team at Bunbury Machinery.



Darren Pulford - 0417 929 487

Ben Johnston - 0429 684 778

Reg Betham - 0408 931 030



Real Machinery - Real Service - Real People

Cnr Picton Road & Forrest Avenue, Bunbury WA 6230

www.bunburymachinery.com.au

64 BONNYDALE DIVIDEND T112

Animal qualified through DNA to both Sire and Dam

AUS#: MBBPT112 ASA#: (4069587) Tattoo: T112
 BD: 19/01/2022 Colour: Homo Black HPS: Polled
 NLIS No: 982 123784795269

Black Simmental

Sire: CLRS DIVIDEND 405D
 BONNYDALE DIVIDEND R43
 ASR LITTLE DESI D6273

Dam: BONNYDALE JASPER
 BONNYDALE DESSY J154
 BONNYDALE DESSY D208

BW	\$ Index Values	
kg	\$API	\$TI
	127	78

	CE	BW	WW	YW	ADG	MCE	MILK	MWW	STAY	DOC	CW	YG	MB	BF	REA	Shr
EPDs	12.4	0.5	77.8	114.3	.23	5.8	24.5	63.4	14.3	13.7	28	-.41	.09	-.097	.75	-.43
%	35	30	55	60	65	50	45	50	70	25	55	55	65	30	85	10
ACC	.41	.46	.43	.42	.42	.21	.16	.26	.29	.41	.37	.30	.34	.30	.36	.03

Traits Observed: CE, BW, WW, Doc, Genomics

Purchaser: Price:

65 BONNYDALE SA PROCLAMATION T502

Animal qualified through DNA to both Sire and Dam

AUS#: MBBDT502 ASA#: (4069660) Tattoo: T502
 BD: 4/02/2022 Colour: Homo Black HPS: Polled
 NLIS No: 982 123784795330

5/8 Black Simmental 3/8 Angus

Sire: WS PROCLAMATION E202
 BONNYDALE PROCLAMATION R007
 BONNYDALE GLITTER P18

Dam: COONAMBLE HECTOR H249
 BONNYDALE SA CARLENE R449
 BONNYDALE CARLENE K185

BW	\$ Index Values	
kg	\$API	\$TI
	150	80

	CE	BW	WW	YW	ADG	MCE	MILK	MWW	STAY	DOC	CW	YG	MB	BF	REA	Shr
EPDs	16.6	-0.1	79.6	121.6	.26	9.7	21.3	61	22.2	20.5	50.9	-.08	.29	-.042	.46	-.18
%	10	45	40	45	55	10	70	55	2	1	10	90	60	50	85	99
ACC	.41	.45	.41	.40	.40	.20	.11	.22	.27	.39	.35	.28	.31	.29	.34	.01

Traits Observed: CE, BW, WW, Doc, Genomics

Purchaser: Price:

66 BONNYDALE SA PROCLAMATION T509

Animal qualified through DNA to both Sire and Dam

AUS#: MBBDT509 ASA#: (4069645) Tattoo: T509
 BD: 7/02/2022 Colour: Homo Black HPS: Polled
 NLIS No: 982 123784795347

3/4 Black Simmental 1/4 Angus

Sire: WS PROCLAMATION E202
 BONNYDALE PROCLAMATION R007
 BONNYDALE GLITTER P18

Dam: BONNYDALE SA MATAURI N304
 BONNYDALE SA ST PAULS R541
 BONNYDALE SA ST PAULS M304

BW	\$ Index Values	
kg	\$API	\$TI
	121	70

	CE	BW	WW	YW	ADG	MCE	MILK	MWW	STAY	DOC	CW	YG	MB	BF	REA	Shr
EPDs	10.2	0.8	77.7	119.5	.26	5.8	20.8	59.6	20.6	16.3	42.7	-.28	.01	-.078	.71	-.20
%	80	65	50	50	55	70	75	60	5	10	20	40	99	15	45	99
ACC	.42	.45	.42	.40	.40	.20	.13	.23	.28	.39	.34	.27	.29	.28	.32	.01

Traits Observed: CE, BW, WW, Doc, Genomics

Purchaser: Price:



67 BONNYDALE SA POWERPLAY T441 Animal qualified through DNA to both Sire and Dam

AUS#: MBBDT441 ASA#: (4069766) Tattoo: T441
 BD: 17/01/2022 Colour: Black HPS: Polled
 NLIS No: 982 123784795372

3/4 Black Simmental 1/4 Angus

Sire: AYRVALE HERCULES H9
 TEXAS POWERPLAY P613
 TEXAS UNDINE H647

Dam: BONNYDALE PRIME CUT P220
 BONNYDALE SA IRIS R519
 BONNYDALE SA IRIS

BW	\$ Index Values	
kg	\$API	\$TI
	136	74

	CE	BW	WW	YW	ADG	MCE	MILK	MWW	STAY	DOC	CW	YG	MB	BF	REA	Shr
EPDs	14.7	-2.2	69.4	116.2	.29	7.6	21.3	56	19	13.6	41	-.17	.25	-.002	.93	
%	25	15	80	55	35	35	70	80	15	35	25	70	70	95	15	
ACC	.38	.43	.38	.36	.36	.15	.05	.16	.23	.35	.30	.25	.27	.25	.29	

Traits Observed: CE, BW, WW, Doc, Genomics

Purchaser: Price:

68 BONNYDALE PROCLAMATION T57 Animal qualified through DNA to both Sire and Dam

AUS#: MBBPT057 ASA#: (4069637) Tattoo: T057
 BD: 13/01/2022 Colour: Homo Black HPS: Polled
 NLIS No: 982 123784795427

Black Simmental

Sire: CCR COWBOY CUT 5048Z
 WS PROCLAMATION E202
 WS MISS SUGAR C4

Dam: BONNYDALE BLACK HAWK H274
 BONNYDALE DREAM CATCHER M89
 BONNYDALE DREAM CATCHER H264

BW	\$ Index Values	
kg	\$API	\$TI
	139	79

	CE	BW	WW	YW	ADG	MCE	MILK	MWW	STAY	DOC	CW	YG	MB	BF	REA	Shr
EPDs	10.4	1.9	75.7	106.2	.19	6.4	34.9	72.7	19.8	14.7	42.7	-.39	.23	-.095	.91	-.38
%	60	60	65	75	90	40	2	15	15	15	15	65	35	30	45	30
ACC	.46	.50	.47	.47	.47	.29	.24	.32	.36	.46	.42	.34	.41	.37	.41	.05

Traits Observed: CE, BW, WW, Doc, Genomics

Purchaser: Price:

69 BONNYDALE QUAKER T250 Animal qualified through DNA to both Sire and Dam

AUS#: MBBPT250 ASA#: (4069934) Tattoo: T250
 BD: 2/02/2022 Colour: Homo Black HPS: Polled
 NLIS No: 982 123771306213

Black Simmental

Sire: OVAL F ALL TIME A322
 BONNYDALE QUAKER Q99
 ASR BLACK MIRANDA Y198

Dam: BONNYDALE NASHVILLE N70
 BONNYDALE GEORGIA Q175
 BONNYDALE GEORGIA L6

BW	\$ Index Values	
kg	\$API	\$TI
	113	68

	CE	BW	WW	YW	ADG	MCE	MILK	MWW	STAY	DOC	CW	YG	MB	BF	REA	Shr
EPDs	10.1	4.1	78.2	122.4	.28	5.2	26.5	65.6	18.5	12.9	35.8	-.48	.01	-.104	1.02	-.26
%	80	99	45	45	40	80	25	30	20	45	40	2	99	2	10	95
ACC	.42	.47	.44	.42	.42	.22	.15	.24	.30	.41	.38	.30	.34	.32	.36	.03

Traits Observed: CE, BW, WW, Doc, Genomics

Purchaser: Price:

70 BONNYDALE QUAKER T41 Animal qualified through DNA to both Sire and Dam

AUS#: MBBPT041 ASA#: (4069795) Tattoo: T041
 BD: 12/01/2022 Colour: Homo Black HPS: Homo Polled
 NLIS No: 982 123784795205

Black Simmental

Sire: OVAL F ALL TIME A322
 BONNYDALE QUAKER Q99
 ASR BLACK MIRANDA Y198

Dam: LRS UNLIMITED 752A
 BONNYDALE GUAVA P58
 BONNYDALE GUAVA L74

BW	\$ Index Values	
kg	\$API	\$TI
	135	72

	CE	BW	WW	YW	ADG	MCE	MILK	MWW	STAY	DOC	CW	YG	MB	BF	REA	Shr
EPDs	12.4	0.5	71.1	107.4	.23	5.8	23	58.5	22.4	9.9	27.1	-.57	.15	-.127	1.02	-.29
%	55	55	70	75	75	70	55	65	2	80	70	1	85	1	10	85
ACC	.43	.49	.45	.44	.44	.23	.17	.27	.32	.43	.39	.31	.35	.33	.37	.03

Traits Observed: CE, BW, WW, Doc, Genomics

Purchaser: Price:

71 BONNYDALE RHINO T206 Animal qualified through DNA to both Sire and Dam

AUS#: MBBPT206 ASA#: (4069978) Tattoo: T206
 BD: 27/01/2022 Colour: Homo Black HPS: Polled
 NLIS No: 982 123779748588

Black Simmental

Sire: TNT TANKER U263
 BONNYDALE RHINO
 BONNYDALE BLACK MIRANDA L127

Dam: BONNYDALE MONTANA M49
 BONNYDALE LIL DESSI P217
 BONNYDALE LIL DESSI M120

BW	\$ Index Values	
kg	\$API	\$TI
	123	76

	CE	BW	WW	YW	ADG	MCE	MILK	MWW	STAY	DOC	CW	YG	MB	BF	REA	Shr
EPDs	8.4	-0.2	84.7	131	.29	4.4	21	63.3	19.8	15.3	25.8	-.53	-.01	-.104	1.06	-.30
%	95	45	25	25	35	90	70	40	10	15	75	1	99	2	5	80
ACC	.42	.47	.43	.42	.42	.22	.14	.25	.30	.41	.36	.30	.34	.30	.36	.02

Traits Observed: CE, BW, WW, Doc, Genomics

Purchaser: Price:

72 BONNYDALE RHINO T317 Animal qualified through DNA to both Sire and Dam

AUS#: MBBPT317 ASA#: (4069567) Tattoo: T317
 BD: 21/02/2022 Colour: Homo Black HPS: Polled
 NLIS No: 982 123761557679

Black Simmental

Sire: TNT TANKER U263
 BONNYDALE RHINO
 BONNYDALE BLACK MIRANDA L127

Dam: WLE LAST CALL Y716
 BONNYDALE GRENADA N33
 BONNYDALE LIL DESSI L23

BW	\$ Index Values	
kg	\$API	\$TI
	133	81

	CE	BW	WW	YW	ADG	MCE	MILK	MWW	STAY	DOC	CW	YG	MB	BF	REA	Shr
EPDs	6.3	2.4	89.7	142.2	.33	3.3	20.6	65.4	20.3	16	41.9	-.39	.05	-.085	.98	-.33
%	95	75	15	10	10	90	75	40	10	10	15	65	75	50	30	60
ACC	.42	.47	.43	.41	.41	.21	.14	.24	.30	.40	.36	.30	.34	.31	.35	.02

Traits Observed: CE, BW, WW, Doc, Genomics

Purchaser: Price:



A COMPLETE NUTRITIONAL STOCKFEED RANGE, MADE ENTIRELY FROM NATURAL INGREDIENTS.

AVAILABLE IN BAGS & BULK

WWW.KETTRIDGES.COM.AU (08) 9724 6800

73 BONNYDALE SA KLOONEY T537

Animal qualified through DNA to both Sire and Dam

AUS#: MBBDT537 ASA#: (4070040) Tattoo: T537
 BD: 17/02/2022 Colour: Homo Black HPS: Polled
 NLIS No: 982 123779748596

5/8 Black Simmental 3/8 Angus

Sire: MILLAH MURRAH KLOONEY K42
 BONNYDALE SA KLOONEY
 BONNYDALE SA IPOD P331

Dam: BONNYDALE MISSOURI M60
 BONNYDALE SA LYDIA Q387
 BONNYDALE SA IPOD L326

BW	\$ Index Values	
kg	\$API	\$TI
128	75	

	CE	BW	WW	YW	ADG	MCE	MILK	MWW	STAY	DOC	CW	YG	MB	BF	REA	Shr
EPDs	12.1	0.2	70.8	104.2	.21	6.7	23.2	58.6	15.8	14.4	15.5	-.30	.31	-.048	.65	
%	55	50	75	80	85	55	50	65	45	25	95	30	55	50	55	
ACC	.39	.45	.38	.36	.36	.17	.08	.18	.25	.34	.32	.26	.29	.27	.31	

Traits Observed: CE, BW, WW, Doc, Genomics

Purchaser: Price:

74 BONNYDALE SA PROCLAMATION T512

Animal qualified through DNA to both Sire and Dam

AUS#: MBBDT512 ASA#: (4069678) Tattoo: T512
 BD: 17/02/2022 Colour: Homo Black HPS: Polled
 NLIS No: 982 123784795325

5/8 Black Simmental 3/8 Angus

Sire: WS PROCLAMATION E202
 BONNYDALE PROCLAMATION R007
 BONNYDALE GLITTER P18

Dam: BONNYDALE SA MATAURI N304
 BONNYDALE SA JOSIE R419
 BONNYDALE SA JOSIE M363

BW	\$ Index Values	
kg	\$API	\$TI
133	75	

	CE	BW	WW	YW	ADG	MCE	MILK	MWW	STAY	DOC	CW	YG	MB	BF	REA	Shr
EPDs	13	0.7	79.7	118.7	.24	8	24.4	64.2	21	16	36.2	-.26	.14	-.060	.70	-.33
%	45	60	40	50	70	30	40	35	4	10	40	45	85	35	50	65
ACC	.24	.32	.27	.25	.25	.17	.12	.20	.10	.24	.17	.13	.11	.10	.17	.02

Traits Observed: BW, CE, WW, Doc

Purchaser: Price:

75 BONNYDALE KLOONEY T494

Animal qualified through DNA to both Sire and Dam

AUS#: MBBDT494 ASA#: (4069806) Tattoo: T494
 BD: 2/02/2022 Colour: Homo Black HPS: Polled
 NLIS No: 982 123779748632

5/8 Black Simmental 3/8 Angus

Sire: MILLAH MURRAH KLOONEY K42
 BONNYDALE SA KLOONEY
 BONNYDALE SA IPOD P331

Dam: BONNYDALE MISSOURI M60
 BONNYDALE SA KAYE Q373
 BONNYDALE SA KAY L306

BW	\$ Index Values	
kg	\$API	\$TI
134	76	

	CE	BW	WW	YW	ADG	MCE	MILK	MWW	STAY	DOC	CW	YG	MB	BF	REA	Shr
EPDs	12.4	-1	69.3	110.3	.26	7.6	19.6	54.2	16.9	12.3	26.8	-.27	.32	-.048	.69	
%	55	30	80	70	55	35	85	85	35	50	70	40	55	50	50	
ACC	.39	.44	.37	.36	.36	.16	.07	.17	.25	.34	.33	.26	.29	.26	.30	

Traits Observed: CE, BW, WW, Doc, Genomics

Purchaser: Price:



76 BONNYDALE SA PATRIOT T557 Animal qualified through DNA to both Sire and Dam

AUS#: MBBDT557 ASA#: (4069684) Tattoo: T557
 BD: 9/02/2022 Colour: Homo Black HPS: Polled
 NLIS No: 982 123784795384

3/4 Black Simmental 1/4 Angus

Sire: GIBBS 3009A ELEMENT
 BONNYDALE PATRIOT P219
 ASR BLACK SCAMP Z2194

Dam: TNT TANKER U263
 BONNYDALE SA ANNABELLE K301
 STRATHTAY ANNABELLE D89

BW	\$ Index Values	
kg	\$API	\$TI
	97	68

	CE	BW	WW	YW	ADG	MCE	MILK	MWW	STAY	DOC	CW	YG	MB	BF	REA	Shr
EPDs	5.5	3.7	88.3	136.6	.30	4.8	24.5	68.5	17.6	12.2	41.9	-.52	-.23	-.105	1.23	-.26
%	99	99	15	20	30	85	40	20	25	55	25	1	99	2	1	95
ACC	.41	.45	.43	.41	.41	.21	.15	.24	.29	.41	.38	.30	.34	.30	.36	.03

Traits Observed: CE, BW, WW, Doc, Genomics

Purchaser: Price:

77 BONNYDALE PROCLAMATION T165 Animal qualified through DNA to both Sire and Dam

AUS#: MBBPT165 ASA#: (4069985) Tattoo: T165
 BD: 23/01/2022 Colour: Homo Black HPS: Polled
 NLIS No: 982 123784795278

Black Simmental

Sire: CCR COWBOY CUT 5048Z
 WS PROCLAMATION E202
 WS MISS SUGAR C4

Dam: SAND RANCH HAND
 BONNYDALE BLACK SCAMP L10
 BONNYDALE SCAMP J101

BW	\$ Index Values	
kg	\$API	\$TI
	140	77

	CE	BW	WW	YW	ADG	MCE	MILK	MWW	STAY	DOC	CW	YG	MB	BF	REA	Shr
EPDs	12.6	-0.6	71.3	102.3	.19	8.9	25.3	60.9	19.3	13	39.1	-.37	.16	-.087	.86	-.38
%	30	15	80	85	90	10	40	60	20	35	20	75	45	50	60	30
ACC	.48	.51	.49	.48	.48	.30	.25	.33	.36	.47	.44	.36	.41	.39	.42	.07

Traits Observed: CE, BW, WW, Doc, Genomics

Purchaser: Price:

78 BONNYDALE JUSTICE T144 Animal qualified through DNA to both Sire and Dam

AUS#: MBBPT144 ASA#: (4069862) Tattoo: T144
 BD: 21/01/2022 Colour: Hetero Black HPS: Polled
 NLIS No: 982 123784795433

Black Simmental

Sire: BBS TRUE JUSTICE B10
 BONNYDALE JUSTICE P105
 ASR MS CAMILLE W967

Dam: HTP SVF IN DEW TIME
 BONNYDALE JOSSIE L59
 BONNYDALE JOSSIE H269

BW	\$ Index Values	
kg	\$API	\$TI
	120	69

	CE	BW	WW	YW	ADG	MCE	MILK	MWW	STAY	DOC	CW	YG	MB	BF	REA	Shr
EPDs	12.4	2.9	78.7	112.8	.21	7.4	22.6	62	20.4	18.1	21.6	-.44	.01	-.099	.75	-.39
%	55	95	45	65	85	40	55	50	10	3	85	5	99	4	40	25
ACC	.43	.47	.43	.42	.42	.24	.17	.26	.31	.42	.39	.31	.36	.34	.37	.03

Traits Observed: CE, BW, WW, Doc, Genomics

Purchaser: Price:

79 BONNYDALE BROAD RANGE T177 Animal qualified through DNA to both Sire and Dam

AUS#: MBB3T177 ASA#: (4069926) Tattoo: T177
 BD: 24/01/2022 Colour: Homo Black HPS: Homo Polled
 NLIS No: 982 123779748686

Black Simmental

Sire: CCR WIDE RANGE 9005A
 GIBBS 7382E BROAD RANGE
 SSF BLK LOUISE Y534

Dam: KOCH BIG TIMBER 685D
 BONNYDALE MISS MOLLY R025
 BONNYDALE MOLLY P228

BW	\$ Index Values	
kg	\$API	\$TI
	134	76

	CE	BW	WW	YW	ADG	MCE	MILK	MWW	STAY	DOC	CW	YG	MB	BF	REA	Shr
EPDs	14.2	-2.2	77.2	125.2	.30	8.8	24.2	62.7	19.4	11.3	21.8	-.17	.08	-.002	.69	-.42
%	30	15	50	35	30	20	40	45	10	65	85	70	95	95	50	15
ACC	.46	.49	.47	.47	.47	.27	.20	.29	.32	.45	.42	.34	.39	.36	.40	.04

Traits Observed: CE, BW, WW, Doc, Genomics

Purchaser: Price:

80 BONNYDALE ROOSEVELT T114 Animal qualified through DNA to both Sire and Dam

AUS#: MBBPT114 ASA#: (4069776) Tattoo: T114
 BD: 19/01/2022 Colour: Hetero Black HPS: Polled
 NLIS No: 982 123784795272

Black Simmental

Sire: CCR COWBOY CUT 5048Z
 TJ ROOSEVELT 366E
 TJ 99A

Dam: TNT TANKER U263
 BONNYDALE SCAMP J127
 ASR BLACK SCAMP N321

BW	\$ Index Values	
kg	\$API	\$TI
	134	72

	CE	BW	WW	YW	ADG	MCE	MILK	MWW	STAY	DOC	CW	YG	MB	BF	REA	Shr
EPDs	10.6	-0.5	72.3	106	.21	8.4	22.2	58.3	22.9	17.1	27.6	-.43	-.06	-.086	.90	-.34
%	60	20	75	75	75	15	65	75	1	3	60	45	95	50	50	55
ACC	.45	.50	.48	.47	.47	.28	.22	.31	.34	.46	.43	.34	.39	.35	.41	.05

Traits Observed: CE, BW, WW, Doc, Genomics

Purchaser: Price:

81 BONNYDALE ROOSEVELT T135 Animal qualified through DNA to both Sire and Dam

AUS#: MBBPT135 ASA#: (4069891) Tattoo: T135
 BD: 21/01/2022 Colour: Homo Black HPS: Polled
 NLIS No: 982 123784795240

Black Simmental

Sire: CCR COWBOY CUT 5048Z
 TJ ROOSEVELT 366E
 TJ 99A

Dam: RCR AUGUSTUS R54
 BONNYDALE LIL DESSI L33
 BONNYDALE LIL DESSI E229

BW	\$ Index Values	
kg	\$API	\$TI
	152	82

	CE	BW	WW	YW	ADG	MCE	MILK	MWW	STAY	DOC	CW	YG	MB	BF	REA	Shr
EPDs	13.8	0.9	85	126.8	.26	6.4	21.7	64.2	24.9	10.9	28.4	-.44	.07	-.087	.95	-.38
%	20	40	30	30	40	40	70	45	1	65	55	40	70	50	35	30
ACC	.44	.50	.47	.46	.46	.26	.21	.30	.33	.44	.41	.33	.38	.34	.40	.05

Traits Observed: CE, BW, WW, Doc, Genomics

Purchaser: Price:

82 BONNYDALE REVENUE T299 Animal qualified through DNA to both Sire and Dam

AUS#: MBBPT299 ASA#: (4069553) Tattoo: T299
 BD: 14/02/2022 Colour: Homo Black HPS: Polled
 NLIS No: 982 123784795321

Black Simmental

Sire: CLRS DIVIDEND 405D
 BONNYDALE REVENUE
 ASR LITTLE DESI D6273

Dam: W/C WIDE TRACK 694Y
 BONNYDALE BLACK MIRANDA N96
 ASR BLACK MIRANDA Y1121

BW	\$ Index Values	
kg	\$API	\$TI
	114	86

	CE	BW	WW	YW	ADG	MCE	MILK	MWW	STAY	DOC	CW	YG	MB	BF	REA	Shr
EPDs	8.6	2.8	99.4	150.3	.32	3.4	21.1	70.7	8.9	17.6	43.7	-.43	.03	-.119	.85	-.21
%	85	80	3	4	10	90	75	20	99	2	10	45	80	5	60	99
ACC	.37	.42	.37	.36	.36	.14	.08	.18	.25	.36	.31	.25	.29	.26	.30	.07

Traits Observed: CE, BW, WW, Doc, Genomics

Purchaser: Price:

83 BONNYDALE BROAD RANGE T55 Animal qualified through DNA to both Sire and Dam

AUS#: MBBPT055 ASA#: (4069665) Tattoo: T055
 BD: 3/01/2022 Colour: Homo Black HPS: Polled
 NLIS No: 982 123779748704

Black Simmental

Sire: CCR WIDE RANGE 9005A
 GIBBS 7382E BROAD RANGE
 SSF BLK LOUISE Y534

Dam: BONNYDALE AUGUSTUS L84
 BONNYDALE FINE ART R086
 BONNYDALE FINE ART N21

BW	\$ Index Values	
kg	\$API	\$TI
	150	88

	CE	BW	WW	YW	ADG	MCE	MILK	MWW	STAY	DOC	CW	YG	MB	BF	REA	Shr
EPDs	15.3	-1.4	85.6	141.8	.35	7.9	19.4	62.1	17.3	11	32.3	-.34	.15	-.054	.92	-.39
%	20	25	25	15	10	30	85	50	30	70	50	20	85	35	15	25
ACC	.42	.45	.46	.45	.45	.24	.18	.27	.31	.43	.41	.33	.37	.35	.39	.03

Traits Observed: CE, BW, WW, Doc, Genomics

Purchaser: Price:

84 BONNYDALE ELEMENT T194 Animal qualified through DNA to both Sire and Dam

AUS#: MBBPT194 ASA#: (4069618) Tattoo: T194
 BD: 26/01/2022 Colour: Homo Black HPS: Homo Polled
 NLIS No: 982 123771306200

Black Simmental

Sire: GW-WBF SUBSTANCE 820Y
 GIBBS 3009A ELEMENT
 GIBBS 9128W MABELLE N341

Dam: CCR COWBOY CUT 5048Z
 ASR MS DESI D6238
 ASR LITTLE DESSI Z213

BW	\$ Index Values	
kg	\$API	\$TI
	153	84

	CE	BW	WW	YW	ADG	MCE	MILK	MWW	STAY	DOC	CW	YG	MB	BF	REA	Shr
EPDs	12.4	-0.3	74.3	116.2	.26	6.8	26.4	63.5	19.4	10.5	26.7	-.43	.34	-.086	.89	-.36
%	35	20	70	55	40	35	30	50	20	70	60	45	20	50	50	40
ACC	.42	.47	.47	.47	.47	.28	.24	.31	.35	.47	.43	.35	.41	.38	.41	.06

Traits Observed: CE, BW, WW, Doc, Genomics

Purchaser: Price:

85 BONNYDALE CASH FLOW T164 Animal qualified through DNA to both Sire and Dam

AUS#: MBBPT164 ASA#: (4069552) Tattoo: T164
 BD: 23/01/2022 Colour: Homo Black HPS: Homo Polled
 NLIS No: 982 123771306236

Black Simmental

Sire: CCR WIDE RANGE 9005A
 BCLR CASH FLOW C820
 BCLR MISS MONICA U820

Dam: CCR COWBOY CUT 5048Z
 ASR MS DESI D6238
 ASR LITTLE DESSI Z213

BW	\$ Index Values	
kg	\$API	\$TI
	159	88

	CE	BW	WW	YW	ADG	MCE	MILK	MWW	STAY	DOC	CW	YG	MB	BF	REA	Shr
EPDs	16.4	0.5	87.2	133.4	.29	7.2	12.7	56.3	20.8	14	27.7	-.36	.26	-.056	.94	-.36
%	4	30	20	20	25	25	99	85	10	20	55	80	30	95	40	40
ACC	.43	.47	.48	.47	.47	.29	.24	.31	.35	.46	.43	.34	.41	.35	.41	.06

Traits Observed: CE, BW, WW, Doc, Genomics

Purchaser: Price:



PURCHASER'S INSTRUCTION SLIP

(to be handed to agents before leaving the Sale Venue, NO VERBAL INSTRUCTIONS CAN BE ACCEPTED)

Name _____

Address _____

Phone _____

Email _____

Contact Person _____

Account to _____

Lots Purchased _____

Total No. of Lots _____

Destination _____

Insure for (period) _____

Other instructions _____

Signature of buyer _____

Delivery Directions to Property: (please draw map on back of this slip)

INSURANCE DISCLAIMER - Insurance risk of stud animals sold at auction transfers to the purchaser at the fall of the hammer including animals remaining on the vendor's property. Purchasers therefore are advised to insure their animals at the completion of the sale. Stud Animals are not covered by commercial livestock insurance at any point.

SPECIAL NOTICE TO BUYERS

- 1) In the interest of buyers and to prevent the occurrence of mistakes, all instructions concerning delivery, trucking or shipping of cattle must be given in writing and signed by the buyer or his representative.
- 2) Instruction for despatch of consignments comprising more than one owner must be signed by each buyer, no instruction slip will be considered complete until all have signed.

NO VERBAL INSTRUCTIONS CAN BE ACCEPTED CONDITIONS OF SALE

The conditions of sale are those laid down and displayed by the selling agents.



KRONE VENDRO TEDDERS & SWADRO RAKES

NEW VENDRO TEDDER RANGE

KRONE SWADRO RAKES

The TC/TS Multi Rotor range with working widths up to 19m in centre or side delivery.

Single rotor working widths 3.5m—4.6m.

Exceptionally strong frame for high stability and durability, setting the benchmark for four rotor raking.

Fully enclosed gearbox with dry cam track design - no oils leaks.

Your choice of height adjustment—mechanical or fully electric from the cab.

New TC1370 four rotor rake with hydropneumatics suspension, integral Soft-Down drop rate control, new tyre size of 710/35 R22.5 and new very wide rotor tyres of size 16x9.50-8.

All new is the TC1250 all mechanical four rotor rake with 12.5m working width.



KRONE VENDRO TEDDERS

New 'Vendro' linkage tedder range available with working widths from 4.6m to 11.2m, replacing the existing KW linkage tedder range.

New features include Krone OptiTurn rotors with new OptiTurn curved tine for optimum throw of crop, ensuring clean high-quality forage.

Features the heaviest square tube frame on the market, with the gearbox installed under the frame to maintain strength in the frame and remove any stress.

Krone's OctoLink clutches are always in mesh for full power and do not require greasing.

Ben Johnston - 0429 684 778

Darren Pulford - 0417 929 487

Reg Betham - 0408 931 030



Real Machinery - Real Service - Real People

Cnr Picton Road & Forrest Avenue, Bunbury WA 6230

www.bunburymachinery.com.au



FOR THE MOST EXPERIENCED TEAM IN CATTLE

With over 180 years under our belt, Elders South West can offer you the most knowledgeable and reliable livestock advice for your business. Backed by a national network and supported by local people, contact our livestock specialists today.

Tim Spicer 0427 812 194

Nathan King 0488 582 455

Lauren Rayner 0447 900 161

Deane Allen 0427 421 306

Michael Carroll 0427 975 620

South West Livestock Team:

Peter Forrest	Boyup Brook	0429 200 004
Jacques Martinson	Busselton	0428 424 116
Robert Gibbings	Capel	0418 931 146
Brad McDonnell	Manjimup	0455 442 702
Cameron Harris	Manjimup	0429 680 334
Wade Krawczyk	Waroona	0428 940 379
Craig Martin	Harvey/Brunswick	0429 631 053

Pearce Watling	Donnybrook/Bridgetown	0437 844 528
Brendon Mead	Boyup Brook/Bridgetown	0428 611 515
Alex Roberts	Boyanup/Dardanup	0427 861 164
Terry Tarbotton	Nannup	0428 932 703
Alec Williams	Margaret River	0428 717 447
Brendan Millar	Margaret River	0439 482 817



for Australian agriculture