



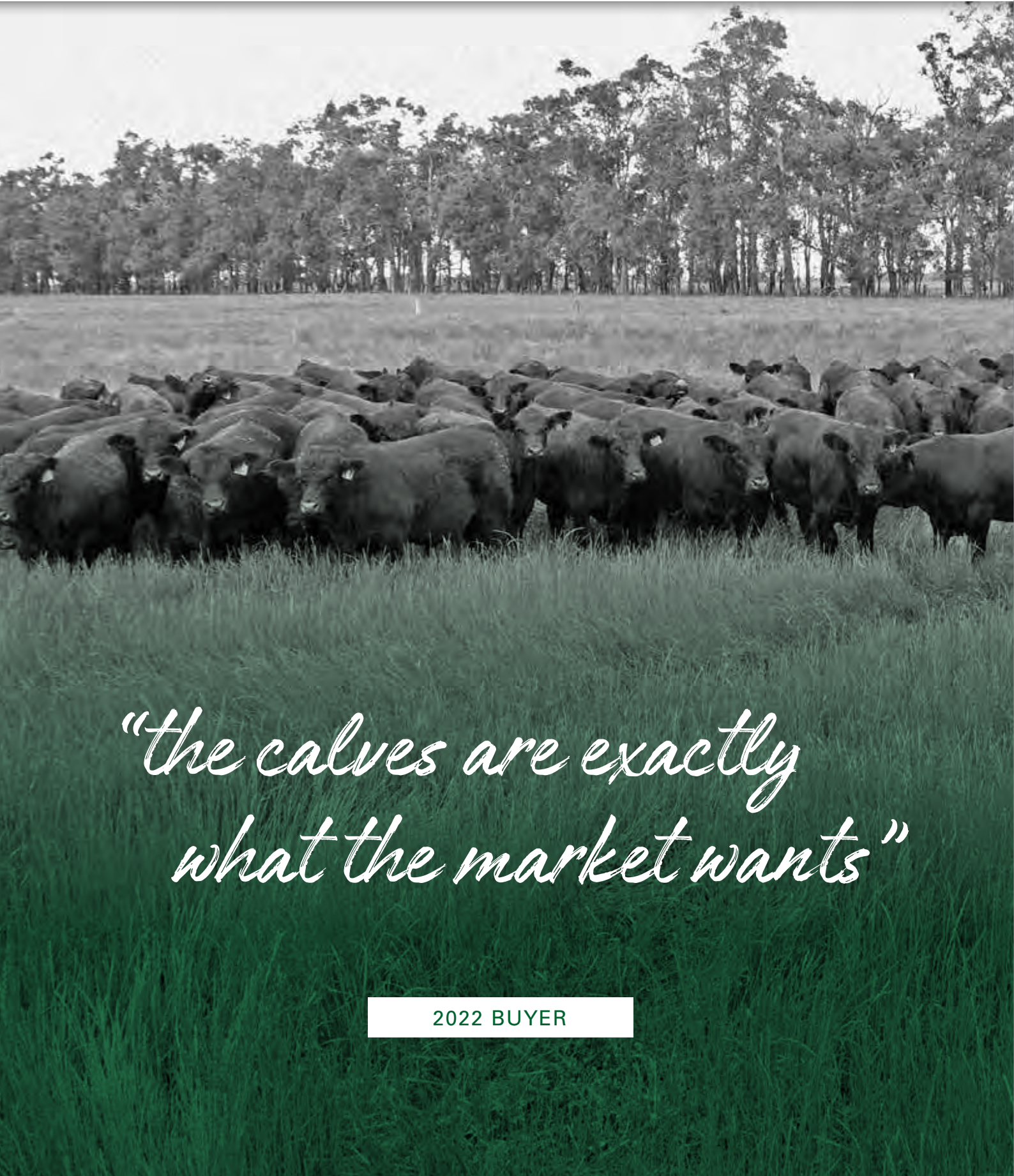
## 5<sup>TH</sup> ANNUAL BULL SALE

OFFERING 54 BLACK BULLS  
SIMMENTAL | SIMANGUS | SUPERBLACK

Wednesday 28th August - 10:30am - Roma Saleyards

LOT VIDEOS  
AVAILABLE  
ON OUR  
WEBSITE





*“the calves are exactly  
what the market wants”*

2022 BUYER

# 5<sup>TH</sup> ANNUAL BULL SALE

OFFERING 54 BLACK BULLS  
SIMMENTAL | SIMANGUS | SUPERBLACK

WEDNESDAY 28<sup>TH</sup> AUGUST - 10:30AM - ROMA SALEYARDS



**ACCOUNT**

JD Berghofer and Introvigne Grazing Co  
Bonnydale QLD Black Simmentals  
Moffatdale, QLD & Bridgetown, WA

**ENQUIRIES:**

Jake Berghofer & Emma Patterson **J:** 0418 649 666 **E:** 0429 622 809

Michael Smith, Senior Stud Stock Sales Specialist **QLD & NT:** (07) 4690 7708 **M:** 0428 541 711

Mike and Rob Introvigne **M:** 0428 644 012 **R:** 0427 644 082

Keith Crouch, Elders Roma **M:** 0428 745 924

CONDUCTING AGENT



INTERFACED WITH



SCAN TO VIEW  
OUR 2024 SALE  
INFORMATION

Or visit the Bonnydale Website

[www.bonnydalesimmentals.com](http://www.bonnydalesimmentals.com)



Back L-R: Jake Berghofer & Emma Patterson (Bonnydale QLD), Rob, Di, Mike, Julie Introvigne & Connor De Campo (Bonnydale WA), Pearce Watling (Elders Bridgetown). Front L-R: Lachlan & Angus Berghofer (Bonnydale QLD). Roma, 2023

## Bonnydale In The Pursuit Of Excellence Through Efficiency

The team at Bonnydale Queensland are proud to offer an outstanding line-up of truly “next level” sires at our 5th Annual Roma Bull Sale. The 54 rising two-year-old sires have been carefully selected with a sole focus to deliver genetic advantage.

To say it has been a challenging twelve months for the Australian beef industry is an understatement. With most now enjoying favourable seasonal conditions and with market prospects looking up we are encouraged by what the future looks like for the Australian beef industry. It’s unfortunate we are always at the mercy of seasonal conditions here in Australia or the USA to determine the fate of our market prospects. To assist in neutralising these issues producers must seek out seedstock suppliers with vision because if we don’t have vision, we can’t provide the product you need to be successful. Bonnydale has a clear vision for the production of profit driven genetics.

Never have we seen the cost of running a beef business as high, which is why production efficiency has become paramount. Production efficiency includes a herds reproductive capacity, calf survival, weaning weights, growth performance, carcase performance, including marbling, and female longevity. We believe our Bonnydale Black Simmental herd offers sires that will deliver on these important requirements to move your herd forward into a profitable and sustainable future.

## **Bonnydale's reputation is underpinned by the principles of the "Triangle B" brand, recognised for integrity, innovation and investment.**

### **These three principles guide every facet of the Bonnydale stud program**

Bonnydale genetics are in demand by feedlots and grass fatteners alike due to their ability to perform in the feed yard or on grass. But the real kicker is how the resultant carcasses perform on the rail. Not only do they yield but they also have the required marbling while minimising wasteful fat. When you add the impact of Bonnydale influenced cow herd efficiency with carcass optimisation and a visionary management team to you can rest assured profits will follow.

Time and again Bonnydale genetics are validating the capacity to achieve all these elements. Bonnydale sires are proving their worth from Eulo to Boulia to Cloncurry to Charters Towers and all areas south into New South Wales and beyond. In fact, Bonnydale sires are at work in all mainland Australian states doing what they do best and that is injecting superior genetics into their progeny.

Bonnydale's pursuit of excellence is underpinned by our targeted approach to sourcing the best USA genetics through our alliance with Triangle J Ranch, Nebraska. This alliance allows Bonnydale to continually drive production efficiency via genetic improvement. In 2023 we purchased a share in TJ Gold Rush and the Australian semen rights to Ruby's Quadrant, two impressive sires that have all the attributes required to drive the Bonnydale herd forward. Both these sires will have progeny on the ground in January 2025. The search for new genetics is a continual part of the Bonnydale business and is underpinned by the Triangle B brand delivering Integrity, Innovation & Investment.

The driving force behind the continued improvement is the use of International Genetic Solutions (IGS). IGS is the world's largest multi breed evaluation and provides unprecedented benchmarking for the Bonnydale herd. With a herd of nearly 1,000 registered females in Western Australia and Queensland providing elite sires for the Australian industry through high selection pressure on relevant production traits. The Bonnydale QLD herd continues to grow in strength through growth in the female herd providing improved selection pressure on females and sires alike.

Our 2024 offering while slightly smaller than in the past is of exceptional quality and probably the best offering to date. The brothers to these sires produced some exceptional demand at our March 2024 Western Australian sale and have the same high calibre genetics on offer at Roma. With a broad range of sires represented there is a quality sire suited to everyone's requirement.

Leading the team are four impressive sires that would qualify as the best Bonnydale has produced and are elite stud sire prospects.

Lots 3, Bonnydale Lincoln U190 and lot 4, Bonnydale Lincoln U218 are impressive flush brothers and a full brother to the famous Bonnydale Nukara and are sired by the equally famous Bonnydale Augustus L84. No two Australian bred sires have had the phenomenal impact Nukara and Augustus L84 have had on the Australian Black Simmental industry. We believe Lincoln U190 and Lincoln U218 are superior sires to their brother Nukara and sire Augustus L84 and that is saying something. Both share exceptional softness with sleek hides, excellent temperament and structure with top end EPD's. This is the last opportunity to secure these phenomenal genetics.

Lot 5 Bonnydale Essential U70 and lot 6 Bonnydale Essential U147 are sired by USA sire Gibbs 9114G Essential who has been used sparingly in Australia. When looking at these two impressive sires and their brothers you will wonder why he hasn't been used extensively. This is your opportunity to invest in two exceptional sires that display all the traits required. Sleek coated, structurally sound, a thick and balanced physique with excellent temperament and outstanding EPD's.

We look forward to seeing you at Roma on Wednesday 28th August for Bonnydale's 5th Annual Roma sale.

# EPD Information

Bonnydale has been utilising Estimated Progeny Differences (EPDs) for many years with every calf born exposed to the same diligent DNA process to provide improved genetic predictability and pedigree assurance.

EPDs are the most accurate and effective tool available for comparing genetic levels as they account for the genetic 'half' that an animal passes onto it's progeny (half from the sire, half from the dam) as opposed to an EBV which is an animals own genetic value for a particular trait.

In using EPDs, the difference between two sires' EPDs represents the unit difference expected in the performance of their progeny. For example, if sires A and B have EPDs of +10 and -5, a 15-unit difference would be expected in their progeny.

Though EPDs allow for the comparison of genetic levels for many economically important traits, they only provide a piece of the economic puzzle. Through well-conceived, rigorous mathematical computation, \$ indexes blend EPDs and economics to estimate an animal's overall impact on your bottom line.

All-Purpose Index (API): Evaluates sires for use on the entire cow herd, bred to both first-calf heifers and mature cows and assuming a self replacing herd with a portion of their daughters required to maintain herd size retained and the remaining heifers and steers put on feed and sold. Expressed as dollars per cow.

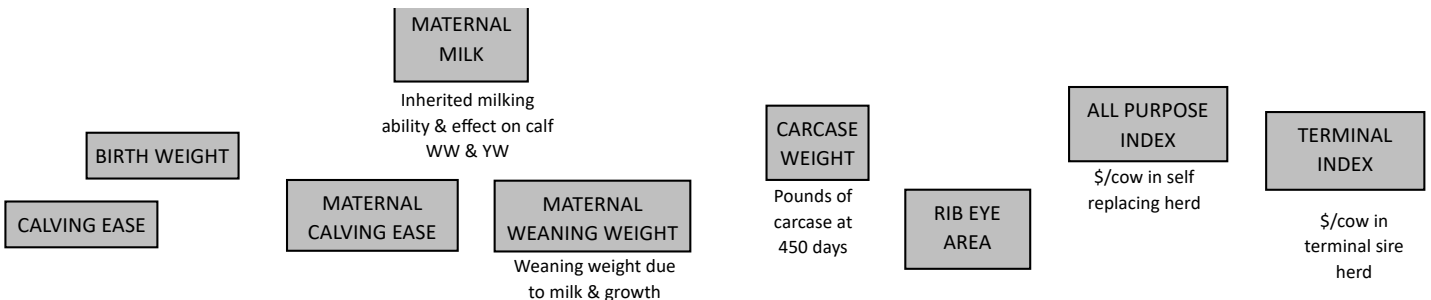
Terminal Index (TI): Evaluates sire for use on mature cows with all offspring put on feed and sold. Dollars per cow exposed under a Terminal sire scenario.

## Black Simmental and SimAngus Register Breed Average 2024

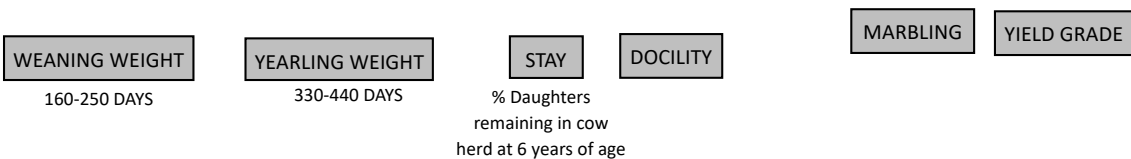
	CE	BW	WW	YW	MCE	MILK	MWW	STAY	DOC	CW	REA	FAT	MB	YG	API	TI
EPD	9.98	2.34	76.8	116.6	5.51	23.1	61.4	15.1	12.3	29.3	0.8	-0.08	0.07	-0.39	61.4	56.9

## Superblack (Simbrah) Register Breed Average 2024

	CE	BW	WW	YW	MCE	MILK	MWW	STAY	DOC	CW	REA	FAT	MB	YG	API	TI
EPD	5.11	5.70	69.8	101.2	3.57	33.0	67.9	13.6	8.71	20.9	0.79	-0.12	-0.09	-0.51	44.7	36.6



	CE	BW	WW	YW	MCE	MILK	MWW	STAY	DOC	CW	REA	FAT	MB	YG	API	TI
EPD	11	-0.1	87.7	137.6	6.7	22.9	66.8	21.3	15.8	38.5	1.06	-0.06	0.37	-0.44	163.1	93.4
RANK	40	15	15	10	35	40	20	3	15	20	15	15	10	35	2	2



TOP 10% RANKING       TOP 30% RANKING

## SALE DAY SAFETY DISCLAIMER

Please be advised when entering the pens people must be aware of the potential risk involved and enter at their own risk.

Children under the age of 16 are not permitted to enter the pens on sale day. Visitors must use common sense when entering the pens and be mindful of the bulls in the pen and other visitors inspecting bulls.

While all care has been taken when selecting bulls for sale to ensure quiet temperament under normal handling circumstances they have not been accustomed to large numbers of people in their vicinity.

Bonnydale and Elders staff will be available on sale day to assist you when entering the pens or to move the bulls closer should you prefer to inspect the bulls from outside the pens.

## AGENTS REBATE

A 3% rebate will be paid to any outside agent who introduces new clients to the stud in writing to both the vendor and Elders 24 hours prior to the sale.

The agent must accompany and assist their client on sale day.

## FREE DELIVERY AUSTRALIA WIDE

The vendors will provide free delivery to the buyers property where possible or the nearest saleyard depending on the transport route. Delivery will take place as soon as possible after the sale

Keith Crouch (Elders, Roma) and Emma Patterson (Bonnydale) will co-ordinate deliveries. Please contact them with any queries.

Keith 0428 745 924 | Emma 0429 622 809

## TAKING DELIVERY OF YOUR NEW BULL

Please ensure you have at least one animal in the receival yard when your new bull arrives. This will ensure your new purchase has company upon arrival. These bulls have been with their mates for a long time and have not been separated on their own before.

## BONNYDALE'S HERD PROTOCOLS

All bulls semen morphology tested  
All bulls ultrasound scanned by David Reid prior to sale  
All bulls tested negative for BVDV

All bulls vaccinated with 7in1, Pestiguard, Vibrovax & Longrange Botulism. All bulls are 3 day and tick fever vaccinated.

## BULL GUARANTEE

All bulls guaranteed for temperament, structural soundness and fertility for 1 year, the exception being if the problem is caused by injury or disease.

Customers are asked to contact Bonnydale as soon as an issue arises.

## INSURANCE

Ownership of the bull transfers at the fall of the hammer. The vendors will take all care and no responsibility until the bulls are delivered.

We recommend insuring your purchase on sale day at the conclusion of the auction.

## PRE-SALE DINNER

The Bonnydale team extend an invitation to those attending the Bonnydale Old Bull Sale to join us for dinner in appreciation of your support.

7pm on Tuesday 27th August (evening before the sale) at Carriages Restaurant and Steakhouse, Overlander Homestead Motel, Roma.

Please contact the Overlander Motel on 07 4622 3555 or one of the Bonnydale team to RSVP.



# THE TAGS THAT STAY IN.

With a range of EID and management tags, our tags have been designed for superior retention, and outstanding durability and readability.

## ONE PIECE



## TWO PIECE



## FEEDLOT



## NLIS TAGS



WANT TO KNOW MORE?  
CALL YOUR LOCAL TERRITORY MANAGER

1800 641 324



# BLACK SIMMENTAL

## LOT 1

## BONNYDALE QUAKER U114

OVAL F ALL TIME A322  
**Sire: BONNYDALE QUAKER**  
 ASR BLACK MIRANDA Y198

AUS#: MBBPU114  
 BD: 23/1/2023

### Black Simmental

BW	\$ Index Values	
kg	AAPI	ATI
41	82.51	121.03
<b>RANK</b>	<b>15</b>	<b>2</b>

BONNYDALE NASHVILLE N70  
**Dam: BONNYDALE GEORGIA Q175**  
 BONNYDALE GEORGIA L6

Homo Black  
 Homo Polled

	CE	BW	WW	YW	MCE	MILK	MWW	STAY	DOC	CW	REA	FAT	MB	YG
EPD	6.3	7.1	97.2	155.7	2.7	30.5	79.1	14.4	16.7	58.3	1.21	-0.075	-0.02	-0.37
<b>RANK</b>	90	100	<b>3</b>	<b>2</b>	90	<b>3</b>	<b>1</b>	65	<b>10</b>	<b>1</b>	<b>5</b>	40	75	65

Purchaser: ..... Price: .....

## LOT 2

## BONNYDALE DIVIDEND U145

CLRS DIVIDEND 405D  
**Sire: BONNYDALE DIVIDEND R43**  
 ASR LITTLE DESSI D6273

AUS#: MBBPU145  
 BD: 25/1/2023

### Black Simmental

BW	\$ Index Values	
kg	AAPI	ATI
43	83.52	104.47
<b>RANK</b>	<b>10</b>	<b>5</b>

BONNYDALE TANKER H200  
**Dam: BONNYDALE GEORGIA M6**  
 BONNYDALE GEORGIA J166

Homo Black  
 Homo Polled

	CE	BW	WW	YW	MCE	MILK	MWW	STAY	DOC	CW	REA	FAT	MB	YG
EPD	11.8	1.4	102.2	158	6	23.8	74.9	16.3	16.6	50.8	1.29	-0.083	0.29	-0.45
<b>RANK</b>	35	35	<b>1</b>	<b>1</b>	50	<b>30</b>	<b>2</b>	40	<b>10</b>	<b>4</b>	<b>3</b>	55	<b>20</b>	<b>30</b>

Purchaser: ..... Price: .....



LOT 2

# SONS OF BONNYDALE L84

LOT 3

BONNYDALE LINCOLN U190

**Bonnydale Lincoln U190** is a leading stud sire prospect with an impeccable and famous pedigree. Sired by the legendary Bonnydale Augustus L84 and out of the extraordinary dam, Bonnydale Georgia H279, he is a full brother to Bonnydale Nukara who needs no introduction. Having an exceptional pedigree isn't enough to put you in elite company but this exciting individual does it in spades. When you add pure class, exceptional temperament and structure and top end EPD's you have a true stud sire prospect.



RCR AUGUSTUS R54  
**Sire: BONNYDALE AUGUSTUS L84**  
 BONNYDALE JOSSIE G204

TRIPLE C BETTIS S72J  
**Dam: BONNYDALE GEORGIA H279**  
 BONNYDALE GEORGIA

AUS#: MBBPU190  
 BD: 29/1/2023  
 Homo Black  
 Homo Polled

**Black Simmental**

BW	\$ Index Values	
kg	AAPI	ATI
34	82.1	73.24
<b>RANK</b>	<b>15</b>	<b>30</b>

	CE	BW	WW	YW	MCE	MILK	MWW	STAY	DOC	CW	REA	FAT	MB	YG
EPD	15.6	-1.2	83.1	128.5	6.7	17	58.6	19	15.3	35.5	1.07	-0.097	-0.22	-0.48
<b>RANK</b>	<b>10</b>	<b>10</b>	<b>30</b>	<b>25</b>	35	85	60	<b>15</b>	<b>15</b>	<b>30</b>	<b>15</b>	80	100	<b>20</b>

Purchaser: ..... Price: .....



LOT 3

# SONS OF BONNYDALE L84

LOT 4

BONNYDALE LINCOLN U218

**Bonnydale Lincoln U218** is a flush brother to Lot 3 and again not only shares an imposing pedigree but equally impressive structure, temperament and pure class. An excellent and balanced set of EPD's delivers the combination for an elite stud sire prospect.



BONNYDALE L84

Sire: **BONNYDALE AUGUSTUS L84**  
 RCR AUGUSTUS R54  
 BONNYDALE JOSSIE G204

Dam: **BONNYDALE GEORGIA H279**  
 TRIPLE C BETTIS S72J  
 BONNYDALE GEORGIA

AUS#: MBBPU218  
 BD: 2/2/2023  
 Homo Black  
 Homo Polled

**Black Simmental**

BW	\$ Index Values	
kg	API	TI
39	150.85	85.85
RANK	10	15

	CE	BW	WW	YW	MCE	MILK	MWW	STAY	DOC	CW	REA	FAT	MB	YG
EPD	16.8	-1.2	87.4	134.8	7.9	17	60.7	20.1	8.8	28.6	0.89	-0.087	0.03	-0.42
RANK	4	10	15	15	20	85	45	10	90	55	45	60	65	45

Purchaser: ..... Price: .....



LOT 4

# SONS OF GIBBS 9114G ESSENTIAL

LOT 5

BONNYDALE ESSENTIAL U70

**Bonnydale Essential U70**, phenotypically flawless Gibbs 9114G Essential son out of an exceptional cow Bonnydale Dessy N98 carrying the powerful W/C Wide Track pedigree. Essential U70 possess outstanding structure and tremendous thickness in a balanced package with a sleek coat that sees him ooze class. Combine these attributes with a set of EPD's that sees him in elite company and you have a genuine stud sire prospect.



Sire: **GIBBS 9114G ESSENTIAL**  
 GIBBS 7382 BROAD RANGE AUS#: MBBPU070  
 GIBBS 7153E STAR 3136A BD: 20/1/2023  
 Dam: **BONNYDALE DESSY N98**  
 BONNYDALE WIDE TRACK L11 Homo Black  
 BONNYDALE DESSY H256 Homo Polled

**Black Simmental**

BW	\$ Index Values	
kg	AAPI	ATI
42	86.25	86.07
<b>RANK</b>	<b>10</b>	<b>15</b>

	CE	BW	WW	YW	MCE	MILK	MWW	STAY	DOC	CW	REA	FAT	MB	YG
EPD	10.3	1.1	89.3	137.9	5.1	28.2	72.9	18	17.1	41.4	1.23	-0.054	0.13	-0.4
<b>RANK</b>	50	<b>30</b>	<b>15</b>	<b>10</b>	65	<b>10</b>	<b>4</b>	<b>25</b>	<b>5</b>	<b>15</b>	<b>4</b>	<b>20</b>	40	55

Purchaser: ..... Price: .....



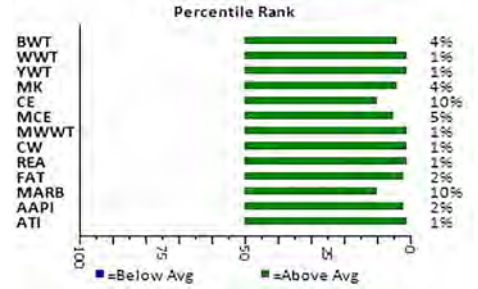
LOT 5

# SONS OF GIBBS 9114G ESSENTIAL

LOT 6

BONNYDALE ESSENTIAL U147

**Bonnydale Essential U147**, another phenotypically flawless individual sired by Gibbs 9114G Essential and out of Bonnydale Dessi L45 a powerful but feminine TNT Tanker daughter. Essential U147 is a sleek coated individual with tremendous thickness and a balanced outlook, add an impressive set of EPD's and you have an exceptional stud sire prospect.



## GIBBS 9114G ESSENTIAL EPDS

GIBBS 7382 BROAD RANGE      AUS#: MBBPU147  
**Sire: GIBBS 9114G ESSENTIAL**  
 GIBBS 7153E STAR 3136A      BD: 25/1/2023  
 TNT TANKER U263      Homo Black  
**Dam: BONNYDALE LIL DESSI L45**  
 BONNYDALE LIL DESSI F202      Homo Polled

## Black Simmental

BW	\$ Index Values	
kg	AAPI	ATI
41	97.81	138.59
<b>RANK</b>	<b>2</b>	<b>1</b>

	CE	BW	WW	YW	MCE	MILK	MWW	STAY	DOC	CW	REA	FAT	MB	YG
EPD	12.9	-0.3	95.2	141.8	8.9	27	74.6	14.6	15	61.5	1.55	-0.063	0.28	-0.44
RANK	25	15	4	10	10	10	2	60	20	1	1	25	20	35

Purchaser: ..... Price: .....



LOT 6

**LOT 7 BONNYDALE RHINO U320**

AUS#: MBBPU320 Homo Black  
 BD: 7/3/2023 Homo Polled

TNT TANKER U263  
**Sire: BONNYDALE RHINO**  
 BONNYDALE BLACK MIRANDA L127  
 BONNYDALE AUGUSTUS L84  
**Dam: BONNYDALE GOLDIE N3**  
 BONNYDALE GOLDIE J112

**Black Simmental**

BW	\$ Index Values	
kg	AAPI	ATI
44	78.7	96.75
<b>RANK</b>	<b>20</b>	<b>10</b>

	CE	BW	WW	YW	MCE	MILK	MWW	STAY	DOC	CW	REA	FAT	MB	YG
EPD	6.3	3.7	90.7	144.2	2.8	22.5	67.9	19.4	12.9	48.4	1.19	-0.072	0.22	-0.4
RANK	90	75	10	5	90	40	15	10	45	5	10	35	25	55

Purchaser: ..... Price: .....

**LOT 8 BONNYDALE RAWHIDE U229**

AUS#: MBBPU229 Homo Black  
 BD: 5/2/2023 Homo Polled

GIBBS 3009A ELEMENT  
**Sire: BONNYDALE RAWHIDE**  
 ASR MS DESI D6238  
 BONNYDALE NASHVILLE N70  
**Dam: BONNYDALE GLENDIVE Q201**  
 BONNYDALE GLENDIVE L65

**Black Simmental**

BW	\$ Index Values	
kg	AAPI	ATI
41	85.89	133.89
<b>RANK</b>	<b>10</b>	<b>1</b>

	CE	BW	WW	YW	MCE	MILK	MWW	STAY	DOC	CW	REA	FAT	MB	YG
EPD	7.6	3.7	79.9	133.8	3.5	24.3	64.3	16.6	11.9	62.7	1.34	-0.107	0.19	-0.48
RANK	80	75	40	15	85	25	30	40	60	1	2	90	30	20

Purchaser: ..... Price: .....

**LOT 9 BONNYDALE RHINO U296**

AUS#: MBBPU296 Homo Black  
 BD: 19/2/2023 Homo Polled

TNT TANKER U263  
**Sire: BONNYDALE RHINO**  
 BONNYDALE BLACK MIRANDA L127  
 RCR AUGUSTUS R54  
**Dam: BONNYDALE LIL DESSI R12**  
 BONNYDALE LIL DESSI J155

**Black Simmental**

BW	\$ Index Values	
kg	AAPI	ATI
42	90.49	104.33
<b>RANK</b>	<b>4</b>	<b>5</b>

	CE	BW	WW	YW	MCE	MILK	MWW	STAY	DOC	CW	REA	FAT	MB	YG
EPD	9	1.8	79.2	130	5.8	23.6	63.2	23.7	11.3	50.7	1.24	-0.096	-0.11	-0.47
RANK	65	45	45	20	50	30	35	1	70	4	4	75	90	25

Purchaser: ..... Price: .....

**LOT 10 BONNYDALE QUAKER U215**

AUS#: MBBPU215 Homo Black  
 BD: 2/2/2023 Homo Polled

OVAL F ALL TIME A322  
**Sire: BONNYDALE QUAKER**  
 ASR BLACK MIRANDA Y198  
 BONNYDALE BULLET PROOF P231  
**Dam: BONNYDALE GOLDIE R196**  
 BONNYDALE GOLDIE N4

**Black Simmental**

BW	\$ Index Values	
kg	AAPI	ATI
44	43.97	53.54
<b>RANK</b>	<b>90</b>	<b>60</b>

	CE	BW	WW	YW	MCE	MILK	MWW	STAY	DOC	CW	REA	FAT	MB	YG
EPD	4.7	4.8	82.8	126.4	1.1	25.8	67.2	16.3	6.9	31.3	0.91	-0.089	0.14	-0.42
RANK	95	90	30	30	100	15	20	40	100	45	40	65	40	45

Purchaser: ..... Price: .....



**LOT 7**

**LOT 11 BONNYDALE RAWHIDE U336**

AUS#: MBB3U336 Hetero Black  
BD: 1/4/2023 Homo Polled

GIBBS 3009A ELEMENT  
**Sire: BONNYDALE RAWHIDE**  
ASR MS DESI D6238  
GIBBS 3009A ELEMENT  
**Dam: BONNYDALE BLACK SCAMP P216**  
ASR BLACK SCAMP Z2194

**Black Simmental**

BW	\$ Index Values	
kg	AAPI	ATI
44	95.03	110.71
<b>RANK</b>	<b>2</b>	<b>3</b>

	CE	BW	WW	YW	MCE	MILK	MWW	STAY	DOC	CW	REA	FAT	MB	YG
EPD	10.1	3.5	88.1	139.7	7.3	28	72.1	20.7	14.5	52.3	1.18	-0.119	0.27	-0.5
RANK	55	75	15	10	30	10	5	4	25	3	10	100	20	15

Purchaser: ..... Price: .....

**LOT 12 BONNYDALE QUAKER U219**

AUS#: MBBPU219 Homo Black  
BD: 2/2/2023 Homo Polled

OVAL F ALL TIME A322  
**Sire: BONNYDALE QUAKER**  
ASR BLACK MIRANDA Y198  
BONNYDALE MONTANA M49  
**Dam: BONNYDALE LIL DESSI P160**  
BONNYDALE LIL DESI M140

**Black Simmental**

BW	\$ Index Values	
kg	AAPI	ATI
34	72.21	63.07
<b>RANK</b>	<b>30</b>	<b>45</b>

	CE	BW	WW	YW	MCE	MILK	MWW	STAY	DOC	CW	REA	FAT	MB	YG
EPD	11.5	0.8	70.7	112.8	4.8	26.6	62	15.8	15.1	30.9	0.99	-0.091	0.1	-0.46
RANK	40	30	75	60	70	15	40	50	20	50	30	70	45	30

Purchaser: ..... Price: .....

**LOT 13 BONNYDALE ESSENTIAL U84**

AUS#: MBBPU084 Homo Black  
BD: 21/1/2023 Homo Polled

GIBBS 7382 BROAD RANGE  
**Sire: GIBBS 9114G ESSENTIAL**  
GIBBS 7153E STAR 3136A  
BONNYDALE LOAD TRACK  
**Dam: BONNYDALE BLACK CARLENE N116**  
BONNYDALE CARLENE K20

**Black Simmental**

BW	\$ Index Values	
kg	AAPI	ATI
32	76.88	81.55
<b>RANK</b>	<b>20</b>	<b>20</b>

	CE	BW	WW	YW	MCE	MILK	MWW	STAY	DOC	CW	REA	FAT	MB	YG
EPD	14.6	-0.2	85.5	138.6	9	34	76.8	19.1	13.5	41.4	1.18	-0.037	0.23	-0.34
RANK	15	15	20	10	10	1	1	15	35	15	10	10	25	75

Purchaser: ..... Price: .....

**LOT 14 BONNYDALE PROGRESSIVE U126**

AUS#: MBB3U126 Homo Black  
BD: 24/1/2023 Homo Polled

CDI INNOVATOR 325D  
**Sire: LCDR PROGRESSIVE 106G**  
WS MISS SUGAR C4  
CCR COWBOY CUT 5048Z  
**Dam: ASR MS JOSIE C5168**  
ASR JOSIE W965

**Black Simmental**

BW	\$ Index Values	
kg	AAPI	ATI
32	86.22	112.73
<b>RANK</b>	<b>10</b>	<b>3</b>

	CE	BW	WW	YW	MCE	MILK	MWW	STAY	DOC	CW	REA	FAT	MB	YG
EPD	14.3	-1.2	77.2	120.4	8.6	25.7	64.3	17.8	10.4	51.5	1.12	-0.088	0.46	-0.41
RANK	15	10	50	40	15	20	30	25	80	3	10	60	5	50

Purchaser: ..... Price: .....



**LOT 11**

**LOT 15 BONNYDALE RAWHIDE U277**

AUS#: MBBPU277 Homo Black  
 BD: 13/2/2023 Homo Polled

GIBBS 3009A ELEMENT  
**Sire: BONNYDALE RAWHIDE**  
 ASR MS DESI D6238  
 BONNYDALE NUKARA  
**Dam: BONNYDALE CARLENE R71**  
 BONNYDALE BLACK CARLENE N157

Black Simmental		
BW	\$ Index Values	
kg	AAPI	ATI
44	62.44	120.31
<b>RANK</b>	55	2

	CE	BW	WW	YW	MCE	MILK	MWW	STAY	DOC	CW	REA	FAT	MB	YG
EPD	10.2	3.7	95.2	149.8	5.7	25.3	72.9	16	5.6	59.7	1.33	-0.094	0.14	-0.45
<b>RANK</b>	55	75	4	3	55	20	4	45	100	1	2	75	40	30

Purchaser: ..... Price: .....

**LOT 16 BONNYDALE REVENUE U255**

AUS#: MBBPU255 Homo Black  
 BD: 9/2/2023 Homo Polled

CLRS DIVIDEND 405D  
**Sire: BONNYDALE REVENUE**  
 ASR LITTLE DESSI D6273  
 BONNYDALE NASHVILLE N70  
**Dam: BONNYDALE GOLDIE Q193**  
 BONNYDALE GOLDIE K140

Black Simmental		
BW	\$ Index Values	
kg	AAPI	ATI
29	75.78	68.75
<b>RANK</b>	25	35

	CE	BW	WW	YW	MCE	MILK	MWW	STAY	DOC	CW	REA	FAT	MB	YG
EPD	13.3	1.2	84.9	123.9	5.5	23.5	66	12.1	18.2	31.6	0.87	-0.072	0.23	-0.37
<b>RANK</b>	20	35	25	35	55	35	20	85	2	45	50	35	25	65

Purchaser: ..... Price: .....

**LOT 17 BONNYDALE ESSENTIAL U18**

AUS#: MBBPU018 Homo Black  
 BD: 14/1/2023 Homo Polled

GIBBS 7382 BROAD RANGE  
**Sire: GIBBS 9114G ESSENTIAL**  
 GIBBS 7153E STAR 3136A  
 TNT TANKER U263  
**Dam: BONNYDALE JOSSIE K103**  
 BONNYDALE JOSSIE G223

Black Simmental		
BW	\$ Index Values	
kg	AAPI	ATI
29	92.27	114.13
<b>RANK</b>	3	3

	CE	BW	WW	YW	MCE	MILK	MWW	STAY	DOC	CW	REA	FAT	MB	YG
EPD	15.7	-2.4	73.1	121.5	11	25.2	61.8	19.7	11.6	52.6	1.29	-0.065	0.37	-0.4
<b>RANK</b>	10	3	65	40	2	20	40	10	65	3	3	30	10	55

Purchaser: ..... Price: .....

**LOT 18 BONNYDALE STANDOUT U127**

AUS#: MBB3U127 Homo Black  
 BD: 24/1/2023 Homo Polled

OMF EPIC E27  
**Sire: SCHOOLEY STANDOUT 27G**  
 CLRS BEAUTY QUEEN 420 B  
 GIBBS 7382 BROAD RANGE  
**Dam: BONNYDALE LIL DESSI S11**  
 BONNYDALE LIL DESSI Q19

Black Simmental		
BW	\$ Index Values	
kg	AAPI	ATI
29	71.51	29.36
<b>RANK</b>	35	90

	CE	BW	WW	YW	MCE	MILK	MWW	STAY	DOC	CW	REA	FAT	MB	YG
EPD	15.6	-2.1	60.1	94.4	9	21.7	51.8	17	16.1	15	0.5	-0.038	0.42	-0.23
<b>RANK</b>	10	3	95	90	10	50	85	35	10	95	95	10	10	90

Purchaser: ..... Price: .....



**LOT 12**



**LOT 19 BONNYDALE QUAKER U194**

AUS#: MBBPU194 Homo Black  
 BD: 30/1/2023 Homo Polled

OVAL F ALL TIME A322  
**Sire: BONNYDALE QUAKER**  
 ASR BLACK MIRANDA Y198  
 CLRS DIVIDEND 405D  
**Dam: BONNYDALE LIL DESSI R27**  
 ASR LITTLE DESSI D6273

**Black Simmental**

BW	\$ Index Values	
kg	AAPI	ATI
37	82.12	72.14
<b>RANK</b>	<b>15</b>	<b>30</b>

	CE	BW	WW	YW	MCE	MILK	MWW	STAY	DOC	CW	REA	FAT	MB	YG
EPD	6.5	2.6	73.7	110.1	2.5	22.5	59.4	14.7	18	32.9	0.9	-0.086	0.01	-0.4
<b>RANK</b>	<b>85</b>	<b>55</b>	<b>65</b>	<b>65</b>	<b>90</b>	<b>40</b>	<b>55</b>	<b>60</b>	<b>3</b>	<b>40</b>	<b>45</b>	<b>60</b>	<b>70</b>	<b>50</b>

Purchaser: ..... Price: .....

**LOT 20 BONNYDALE ESSENTIAL U104**

AUS#: MBBPU104 Homo Black  
 BD: 22/1/2023 Homo Polled

GIBBS 7382 BROAD RANGE  
**Sire: GIBBS 9114G ESSENTIAL**  
 GIBBS 7153E STAR 3136A  
 RCR AUGUSTUS R54  
**Dam: BONNYDALE JOSIE N152**  
 BONNYDALE JOSSIE G204

**Black Simmental**

BW	\$ Index Values	
kg	AAPI	ATI
35	81.47	92.2
<b>RANK</b>	<b>15</b>	<b>10</b>

	CE	BW	WW	YW	MCE	MILK	MWW	STAY	DOC	CW	REA	FAT	MB	YG
EPD	14.5	-0.2	77.5	129.5	7.1	17.1	55.9	23.2	9.5	46	1	-0.043	0.22	-0.28
<b>RANK</b>	<b>15</b>	<b>15</b>	<b>50</b>	<b>25</b>	<b>30</b>	<b>85</b>	<b>70</b>	<b>1</b>	<b>85</b>	<b>10</b>	<b>25</b>	<b>15</b>	<b>25</b>	<b>85</b>

Purchaser: ..... Price: .....

**LOT 21 BONNYDALE DIVIDEND U55**

AUS#: MBBPU055 Hetero Black  
 BD: 19/1/2023 Homo Polled

CLRS DIVIDEND 405D  
**Sire: BONNYDALE DIVIDEND R43**  
 ASR LITTLE DESSI D6273  
 BONNYDALE BLACK HAWK H274  
**Dam: BONNYDALE GYPSY L87**  
 BONNYDALE GYPSY H241

**Black Simmental**

BW	\$ Index Values	
kg	AAPI	ATI
32	69.19	23.7
<b>RANK</b>	<b>40</b>	<b>95</b>

	CE	BW	WW	YW	MCE	MILK	MWW	STAY	DOC	CW	REA	FAT	MB	YG
EPD	15.1	-2.2	63.9	85.2	7.6	22	54	16.8	13.5	10.6	0.85	-0.085	0.21	-0.48
<b>RANK</b>	<b>10</b>	<b>3</b>	<b>90</b>	<b>100</b>	<b>25</b>	<b>45</b>	<b>80</b>	<b>35</b>	<b>35</b>	<b>100</b>	<b>55</b>	<b>55</b>	<b>30</b>	<b>20</b>

Purchaser: ..... Price: .....

**LOT 22 BONNYDALE QUAKER U260**

AUS#: MBBPU260 Homo Black  
 BD: 10/2/2023 Homo Polled

OVAL F ALL TIME A322  
**Sire: BONNYDALE QUAKER**  
 ASR BLACK MIRANDA Y198  
 BONNYDALE NEVADA N160  
**Dam: BONNYDALE JOSIE Q183**  
 BONNYDALE JOSSIE M146

**Black Simmental**

BW	\$ Index Values	
kg	AAPI	ATI
38	38.75	10.88
<b>RANK</b>	<b>95</b>	<b>100</b>

	CE	BW	WW	YW	MCE	MILK	MWW	STAY	DOC	CW	REA	FAT	MB	YG
EPD	4.3	2.9	69.1	107.5	1.5	22.6	57.2	16.1	10.5	12.4	0.62	-0.048	0.04	-0.3
<b>RANK</b>	<b>100</b>	<b>65</b>	<b>80</b>	<b>70</b>	<b>95</b>	<b>40</b>	<b>65</b>	<b>45</b>	<b>80</b>	<b>95</b>	<b>90</b>	<b>15</b>	<b>60</b>	<b>80</b>

Purchaser: ..... Price: .....



**LOT 19**

**LOT 23 BONNYDALE PROCLAMATION U99**

AUS#: MBBPU099 Hetero Black  
BD: 22/1/2023 Homo Polled

CCR COWBOY CUT 5048Z  
**Sire: WS PROCLAMATION E202**  
WS MISS SUGAR C4  
BONNYDALE AUGUSTUS L84  
**Dam: BONNYDALE JOSIE S76**  
BONNYDALE JOSIE N127

**Black Simmental**

BW	\$ Index Values	
kg	AAPI	ATI
25	78.16	85.79
<b>RANK</b>	<b>20</b>	<b>15</b>

	CE	BW	WW	YW	MCE	MILK	MWW	STAY	DOC	CW	REA	FAT	MB	YG
EPD	12.1	1	91.1	138.7	6.4	23.9	69.4	19.6	12.3	42.6	0.92	-0.099	0.21	-0.4
RANK	30	30	10	10	40	30	10	10	55	15	40	80	30	50

Purchaser: ..... Price: .....

**LOT 24 BONNYDALE ROCK N ROLL U332**

AUS#: MBB3U332 Homo Black  
BD: 28/3/2023 Homo Polled

BONNYDALE AUGUSTUS L84  
**Sire: BONNYDALE ROCK N ROLL**  
BONNYDALE GEORGIA J166  
KOCH BIG TIMBER 685D  
**Dam: BONNYDALE GLENDIVE Q47**  
BONNYDALE GLENDIVE N88

**Black Simmental**

BW	\$ Index Values	
kg	AAPI	ATI
34	59.33	45.41
<b>RANK</b>	<b>65</b>	<b>75</b>

	CE	BW	WW	YW	MCE	MILK	MWW	STAY	DOC	CW	REA	FAT	MB	YG
EPD	14	-1.7	78.6	120.4	7.5	20.9	60.2	18	10.8	25.5	0.94	-0.077	0.16	-0.43
RANK	20	5	45	40	25	55	50	25	75	70	35	45	35	40

Purchaser: ..... Price: .....

**LOT 25 BONNYDALE Q DIVIDEND U47**

AUS#: BQDPU047 Homo Black  
BD: 28/1/2023 Homo Polled

CLRS DIVIDEND 405D  
**Sire: BONNYDALE DIVIDEND R43**  
ASR LITTLE DESSI D6273  
BONNYDALE BLACK HAWK H274  
**Dam: BONNYDALE GRENADA M108**  
BONNYDALE GRENADA

**Black Simmental**

BW	\$ Index Values	
kg	AAPI	ATI
38	61.16	65.69
<b>RANK</b>	<b>60</b>	<b>40</b>

	CE	BW	WW	YW	MCE	MILK	MWW	STAY	DOC	CW	REA	FAT	MB	YG
EPD	10.9	2.3	95.1	135.9	5.5	23.4	70.9	15.1	11.7	33.8	1.05	-0.113	0.11	-0.52
RANK	45	50	4	15	55	35	10	55	65	35	20	95	45	10

Purchaser: ..... Price: .....

**LOT 26 BONNYDALE Q ELEMENT U17**

AUS#: BQD2U017 Homo Black  
BD: 8/1/2023 Homo Polled

GIBBS 3009A ELEMENT  
**Sire: BONNYDALE ELEMENT Q39**  
ASR BLACK MIRANDA Y198  
KOCH BIG TIMBER 685D  
**Dam: BONNYDALE QLD LIL DESSI Q024**  
BONNYDALE LIL DESI N118

**Black Simmental**

BW	\$ Index Values	
kg	AAPI	ATI
38	62.99	70.85
<b>RANK</b>	<b>55</b>	<b>35</b>

	CE	BW	WW	YW	MCE	MILK	MWW	STAY	DOC	CW	REA	FAT	MB	YG
EPD	11.7	0.6	90.7	136.2	5.3	19.4	64.8	13.6	13.5	35.8	0.84	-0.071	0.16	-0.33
RANK	35	25	10	15	60	70	25	70	35	30	55	35	35	75

Purchaser: ..... Price: .....



**LOT 23**

**LOT 27** **BONNYDALE Q ELEMENT U36**

AUS#: BQDPU036 Homo Black  
 BD: 25/1/2023 Homo Polled

GIBBS 3009A ELEMENT  
**Sire: BONNYDALE ELEMENT Q39**  
 ASR BLACK MIRANDA Y198  
 BONNYDALE QLD AUSTIN P6  
**Dam: BONNYDALE QLD BONNYDALE Q GYPS**  
 BONNYDALE GYPSY N136

**Black Simmental**

BW	\$ Index Values	
kg	AAPI	ATI
38	68.06	91
<b>RANK</b>	40	10

	CE	BW	WW	YW	MCE	MILK	MWW	STAY	DOC	CW	REA	FAT	MB	YG
EPD	8.7	3.4	98.3	151.1	3	21.6	70.8	13.6	14.9	45.6	1.1	-0.104	0.07	-0.46
<b>RANK</b>	70	70	2	2	90	50	10	70	20	10	15	90	55	25

Purchaser: ..... Price: .....

**LOT 28** **BONNYDALE Q DIVIDEND U34**

AUS#: BQDPU034 Homo Black  
 BD: 25/1/2023 Homo Polled

CLRS DIVIDEND 405D  
**Sire: BONNYDALE DIVIDEND R43**  
 ASR LITTLE DESSI D6273  
 BONNYDALE SA RANCH HAND M342  
**Dam: BONNYDALE QLD GEORGIA P023**  
 BONNYDALE GEORGIA M91

**Black Simmental**

BW	\$ Index Values	
kg	AAPI	ATI
40	68.11	66.91
<b>RANK</b>	40	40

	CE	BW	WW	YW	MCE	MILK	MWW	STAY	DOC	CW	REA	FAT	MB	YG
EPD	10	1.8	87.8	127.6	3.9	20.6	64.5	14.4	14.4	32.9	0.85	-0.083	0.23	-0.38
<b>RANK</b>	55	45	15	25	80	60	25	65	25	40	55	55	25	60

Purchaser: ..... Price: .....

# THE BONNYDALE QLD PRE-SALE DINNER

---

## CARRIAGES RESTAURANT & STEAKHOUSE ROMA OVERLANDER HOMESTEAD MOTEL, ROMA

**7pm on Tuesday 27th August**  
(evening before the sale)

The Bonnydale Team extend an invitation to those attending the Bonnydale QLD Bull Sale to join us for complimentary dinner in appreciation of your support

To book, contact the Overlander Homestead Motel on **07 4622 3555**  
(Quote "**Bonnydale**" when booking)



# SIMANGUS



**LOT 29 BONNYDALE SA SILVERADO U465**

AUS#: MBBDU465 Homo Black  
BD: 30/1/2023 Homo Polled

ASR AMERICAN PATRIOT F843  
**Sire: BONNYDALE SA SILVERADO**  
BONNYDALE SA ISABELLA P354  
BONNYDALE SA MATAURI N304  
**Dam: BONNYDALE SA GEORGIA R465**  
BONNYDALE SA GEORGIA M348

SimAngus		
BW	\$ Index Values	
kg	AAPI	ATI
	79.95	76.85
<b>RANK</b>	<b>15</b>	<b>25</b>

	CE	BW	WW	YW	MCE	MILK	MWW	STAY	DOC	CW	REA	FAT	MB	YG
EPD	4.6	3.8	81.8	131.9	3.8	30.1	71	13.4	20.9	37.5	1.02	-0.045	0.18	-0.32
RANK	95	80	35	20	80	3	10	75	1	25	25	15	30	75

Purchaser: ..... Price: .....

**LOT 30 BONNYDALE SA QUANTUM U467**

AUS#: MBBDU467 Homo Black  
BD: 30/1/2023 Homo Polled

BONNYDALE NASHVILLE N70  
**Sire: BONNYDALE QUANTUM**  
BONNYDALE JOSIE M55  
BONNYDALE SA ELEVATOR L389  
**Dam: BONNYDALE SA JACARANDA Q392**  
BONNYDALE SA JACARANDA M383

SimAngus		
BW	\$ Index Values	
kg	AAPI	ATI
50	91.41	153.82
<b>RANK</b>	<b>4</b>	<b>1</b>

	CE	BW	WW	YW	MCE	MILK	MWW	STAY	DOC	CW	REA	FAT	MB	YG
EPD	9.1	5.2	89.5	137.6	5.5	28.5	73.3	9.2	15.7	67.7	1.03	-0.061	0.09	-0.24
RANK	65	95	15	10	55	10	4	100	15	1	20	25	50	90

Purchaser: ..... Price: .....

**LOT 31 BONNYDALE SA SILVERADO U486**

AUS#: MBBDU486 Homo Black  
BD: 3/2/2023 Homo Polled

ASR AMERICAN PATRIOT F843  
**Sire: BONNYDALE SA SILVERADO**  
BONNYDALE SA ISABELLA P354  
MILLAH MURRAH KLOONEY K42  
**Dam: BONNYDALE SA IPOD R404**  
BONNYDALE SA IPOD P307

SimAngus		
BW	\$ Index Values	
kg	AAPI	ATI
43	68.92	73.24
<b>RANK</b>	<b>40</b>	<b>30</b>

	CE	BW	WW	YW	MCE	MILK	MWW	STAY	DOC	CW	REA	FAT	MB	YG
EPD	9	4.5	86.1	135.2	6	27.9	70.9	12.7	17.3	36.9	0.61	-0.021	0.37	-0.13
RANK	65	85	20	15	50	10	10	80	4	25	90	5	10	100

Purchaser: ..... Price: .....

**LOT 32 BONNYDALE SA QUANTUM U545**

AUS#: MBBDU545 Homo Black  
BD: 20/2/2023 Homo Polled

BONNYDALE NASHVILLE N70  
**Sire: BONNYDALE QUANTUM**  
BONNYDALE JOSIE M55  
BONNYDALE SA ELEVATOR L389  
**Dam: BONNYDALE SA IRIS P344**  
BONNYDALE SA IVORY K358

SimAngus		
BW	\$ Index Values	
kg	AAPI	ATI
45	70.48	75.01
<b>RANK</b>	<b>35</b>	<b>30</b>

	CE	BW	WW	YW	MCE	MILK	MWW	STAY	DOC	CW	REA	FAT	MB	YG
EPD	10.4	3.2	66.4	94.9	6.2	24.2	57.4	13	11.5	33.3	1.23	-0.086	0.07	-0.51
RANK	50	70	85	90	45	30	65	75	65	40	4	60	55	15

Purchaser: ..... Price: .....

**LOT 33 BONNYDALE SA QUANTICO U519**

AUS#: MBBDU519 Homo Black  
BD: 12/2/2023 Homo Polled

KOCH BIG TIMBER 685D  
**Sire: BONNYDALE SA QANTICO Q324**  
BONNYDALE SA INDIGO N350  
BONNYDALE NEVADA N160  
**Dam: BONNYDALE JENNY S91**  
BONNYDALE JENNY K192

SimAngus		
BW	\$ Index Values	
kg	AAPI	ATI
37	72.26	96.34
<b>RANK</b>	<b>30</b>	<b>10</b>

	CE	BW	WW	YW	MCE	MILK	MWW	STAY	DOC	CW	REA	FAT	MB	YG
EPD	8.3	1.3	77	118.9	2.8	18.4	56.9	10.6	14.8	44.2	0.75	-0.034	0.26	-0.18
RANK	75	35	50	45	90	75	65	95	20	10	70	10	20	95

Purchaser: ..... Price: .....

**LOT 34 BONNYDALE SA QUANTUM U551**

AUS#: MBBDU551 Homo Black  
BD: 21/2/2023 Homo Polled

BONNYDALE NASHVILLE N70  
**Sire: BONNYDALE QUANTUM**  
BONNYDALE JOSIE M55  
BONNYDALE SA TANK K299  
**Dam: BONNYDALE SA GEORGIA Q382**  
BONNYDALE SA GEORGIA J345

SimAngus		
BW	\$ Index Values	
kg	AAPI	ATI
42	73.32	89.61
<b>RANK</b>	<b>30</b>	<b>15</b>

	CE	BW	WW	YW	MCE	MILK	MWW	STAY	DOC	CW	REA	FAT	MB	YG
EPD	12.8	1.1	68.1	109.8	6	18.6	52.7	16.3	10.4	42.2	1.14	-0.058	0.11	-0.37
RANK	25	30	80	65	50	75	85	40	80	15	10	20	45	65

Purchaser: ..... Price: .....

**LOT 35 BONNYDALE SA SILVERADO U488**

AUS#: MBBDU488 Homo Black  
BD: 4/2/2023 Homo Polled

ASR AMERICAN PATRIOT F843  
**Sire: BONNYDALE SA SILVERADO**  
BONNYDALE SA ISABELLA P354  
MILLAH MURRAH KLOONEY K42  
**Dam: BONNYDALE SA LYDIA R412**  
BONNYDALE SA LYDIA P398

SimAngus		
BW	\$ Index Values	
kg	AAPI	ATI
46	74.65	88.43
<b>RANK</b>	<b>25</b>	<b>15</b>

	CE	BW	WW	YW	MCE	MILK	MWW	STAY	DOC	CW	REA	FAT	MB	YG
EPD	4.1	4.5	84.5	135.8	3.3	28.1	70.4	13.4	17.4	43.5	0.82	-0.04	0.39	-0.22
<b>RANK</b>	<b>100</b>	<b>85</b>	<b>25</b>	<b>15</b>	<b>85</b>	<b>10</b>	<b>10</b>	<b>75</b>	<b>4</b>	<b>15</b>	<b>60</b>	<b>15</b>	<b>10</b>	<b>95</b>

Purchaser: ..... Price: .....

**LOT 36 BONNYDALE SA POWERPLAY U426**

AUS#: MBBDU426 Homo Black  
BD: 15/1/2023 Homo Polled

AYRVALE HERCULES H9  
**Sire: TEXAS POWERPLAY P613**  
TEXAS UNDINE H647  
BONNYDALE SA MATAURI N304  
**Dam: BONNYDALE SASA IPOD S516**  
BONNYDALE SA IPOD L330

SimAngus		
BW	\$ Index Values	
kg	AAPI	ATI
35	83.35	130.08
<b>RANK</b>	<b>10</b>	<b>1</b>

	CE	BW	WW	YW	MCE	MILK	MWW	STAY	DOC	CW	REA	FAT	MB	YG
EPD	10.2	0.7	78	132.8	6.2	24.7	63.7	12.3	14.7	60.1	0.75	0.009	0.43	-0.01
<b>RANK</b>	<b>55</b>	<b>25</b>	<b>45</b>	<b>20</b>	<b>45</b>	<b>25</b>	<b>30</b>	<b>85</b>	<b>20</b>	<b>1</b>	<b>70</b>	<b>1</b>	<b>10</b>	<b>100</b>

Purchaser: ..... Price: .....

**LOT 37 BONNYDALE SA KLOONEY U542**

AUS#: MBBDU542 Homo Black  
BD: 19/2/2023 Homo Polled

MILLAH MURRAH KLOONEY K42  
**Sire: BONNYDALE SA KLOONEY R417**  
BONNYDALE SA IPOD P331  
BONNYDALE MISSOURI  
**Dam: BONNYDALE SA RUTH Q347**  
BONNYDALE SA RUTH K310

SimAngus		
BW	\$ Index Values	
kg	AAPI	ATI
41	101.73	123.28
<b>RANK</b>	<b>1</b>	<b>2</b>

	CE	BW	WW	YW	MCE	MILK	MWW	STAY	DOC	CW	REA	FAT	MB	YG
EPD	13.8	1.7	74.1	110.3	8	15.3	52.4	13.5	16.9	51.9	0.85	-0.029	0.51	-0.17
<b>RANK</b>	<b>20</b>	<b>40</b>	<b>65</b>	<b>65</b>	<b>20</b>	<b>95</b>	<b>85</b>	<b>75</b>	<b>5</b>	<b>3</b>	<b>55</b>	<b>10</b>	<b>3</b>	<b>95</b>

Purchaser: ..... Price: .....

**LOT 38 BONNYDALE SA SHOGUN U517**

AUS#: MBBDU517 Homo Black  
BD: 11/2/2023 Homo Polled

BONNYDALE PATRIOT  
**Sire: BONNYDALE SA SHOGUN**  
BONNYDALE SA IRIS H340  
BONNYDALE NUKARA  
**Dam: BONNYDALE SA INNESVALE R424**  
BONNYDALE SA INNESVALE P379

SimAngus		
BW	\$ Index Values	
kg	AAPI	ATI
44	74.02	83.94
<b>RANK</b>	<b>30</b>	<b>20</b>

	CE	BW	WW	YW	MCE	MILK	MWW	STAY	DOC	CW	REA	FAT	MB	YG
EPD	12.5	2	78.9	116.8	7.9	23.2	62.7	16.1	11.2	39.4	1.11	-0.069	-0.05	-0.4
<b>RANK</b>	<b>30</b>	<b>45</b>	<b>45</b>	<b>50</b>	<b>20</b>	<b>35</b>	<b>35</b>	<b>45</b>	<b>70</b>	<b>20</b>	<b>15</b>	<b>30</b>	<b>80</b>	<b>50</b>

Purchaser: ..... Price: .....



**LOT 33**

**LOT 39 BONNYDALE SA KLOONEY U506**

AUS#: MBBDU506 Homo Black  
BD: 10/2/2023 Homo Polled

MILLAH MURRAH KLOONEY K42  
**Sire: BONNYDALE SA KLOONEY R417**  
BONNYDALE SA IPOD P331  
BONNYDALE RANCH HAND K101  
**Dam: BONNYDALE SA JOSIE Q371**  
BONNYDALE SA JOSIE N302

SimAngus		
BW	\$ Index Values	
kg	AAPI	ATI
45	86.97	57.53
<b>RANK</b>	<b>10</b>	55

	CE	BW	WW	YW	MCE	MILK	MWW	STAY	DOC	CW	REA	FAT	MB	YG
EPD	14	2.2	60.8	95.8	8.4	27	57.4	16.3	18.7	25.5	0.63	-0.059	0.39	-0.28
<b>RANK</b>	<b>20</b>	50	95	90	<b>15</b>	<b>10</b>	65	40	<b>2</b>	70	85	<b>25</b>	<b>10</b>	85

Purchaser: ..... Price: .....

**LOT 40 BONNYDALE SA SILVERADO U412**

AUS#: MBBDU412 Homo Black  
BD: 13/1/2023 Homo Polled

ASR AMERICAN PATRIOT F843  
**Sire: BONNYDALE SA SILVERADO**  
BONNYDALE SA ISABELLA P354  
BONNYDALE SA MATAURI N304  
**Dam: BONNYDALE SA LIL DESSI R472**  
BONNYDALE SA LIL DESSI M312

SimAngus		
BW	\$ Index Values	
kg	AAPI	ATI
45	63.72	50.94
<b>RANK</b>	<b>55</b>	65

	CE	BW	WW	YW	MCE	MILK	MWW	STAY	DOC	CW	REA	FAT	MB	YG
EPD	4	7.1	92.4	150.3	3.4	30.5	76.7	14.8	20.2	30.3	0.81	-0.074	-0.17	-0.36
<b>RANK</b>	<b>100</b>	<b>100</b>	<b>10</b>	<b>3</b>	<b>85</b>	<b>3</b>	<b>1</b>	<b>60</b>	<b>1</b>	50	60	40	95	70

Purchaser: ..... Price: .....

**LOT 41 BONNYDALE SA QUANTUM U540**

AUS#: MBBDU540 Homo Black  
BD: 19/2/2023 Homo Polled

BONNYDALE NASHVILLE N70  
**Sire: BONNYDALE QUANTUM**  
BONNYDALE JOSIE M55  
BONNYDALE SA ELEVATOR L389  
**Dam: BONNYDALE SA JOSIE N343**  
BONNYDALE JOSSIE L146

SimAngus		
BW	\$ Index Values	
kg	AAPI	ATI
42	97.51	107.18
<b>RANK</b>	<b>2</b>	<b>4</b>

	CE	BW	WW	YW	MCE	MILK	MWW	STAY	DOC	CW	REA	FAT	MB	YG
EPD	14.8	2.4	81.9	116.4	9.1	24.1	65.1	16.2	15.4	46	1.09	-0.068	0.03	-0.37
<b>RANK</b>	<b>15</b>	55	35	50	<b>10</b>	<b>30</b>	<b>25</b>	45	<b>15</b>	<b>10</b>	<b>15</b>	<b>30</b>	65	65

Purchaser: ..... Price: .....

**LOT 42 BONNYDALE SA BROADSTRIKE U531**

AUS#: MBBDU531 Homo Black  
BD: 15/2/2023 Homo Polled

GIBBS 7382 BROAD RANGE  
**Sire: BONNYDALE BROADSTRIKE**  
BONNYDALE MIRANDA Q31  
BONNYDALE SA LEGEND  
**Dam: BONNYDALE SA IRIS S506**  
BONNYDALE SA GOBLIN P352

SimAngus		
BW	\$ Index Values	
kg	AAPI	ATI
33	46.64	53.93
<b>RANK</b>	<b>90</b>	<b>60</b>

	CE	BW	WW	YW	MCE	MILK	MWW	STAY	DOC	CW	REA	FAT	MB	YG
EPD	13.2	0.3	78	119.7	8.5	24	63	12.8	8.9	29.4	0.71	-0.018	0.27	-0.19
<b>RANK</b>	<b>25</b>	<b>20</b>	45	45	<b>15</b>	<b>30</b>	35	80	90	55	75	<b>4</b>	<b>20</b>	95

Purchaser: ..... Price: .....



**LOT 39**

**LOT 43 BONNYDALE SA HECTOR U505**

AUS#: MBBDU505 Homo Black  
 BD: 9/2/2023 Homo Polled

COONAMBLE HECTOR H249  
**Sire: BONNYDALE SA HECTOR**  
 BONNYDALE GEORGIA J128  
 BONNYDALE SA KANSAS  
**Dam: BONNYDALE SA REBECCA K307**  
 BONNYDALE SA REBECCA G320

SimAngus		
BW	\$ Index Values	
kg	AAPI	ATI
40	91.41	69.78
<b>RANK</b>	<b>4</b>	<b>35</b>

	CE	BW	WW	YW	MCE	MILK	MWW	STAY	DOC	CW	REA	FAT	MB	YG
EPD	15.7	1.4	68.2	100	7.2	20.4	54.5	19.5	15.2	30.5	0.63	-0.052	0.09	-0.24
<b>RANK</b>	<b>10</b>	<b>35</b>	<b>80</b>	<b>85</b>	<b>30</b>	<b>60</b>	<b>80</b>	<b>10</b>	<b>15</b>	<b>50</b>	<b>85</b>	<b>20</b>	<b>50</b>	<b>90</b>

Purchaser: ..... Price: .....

**LOT 44 BONNYDALE SA POWERPLAY U409**

AUS#: MBBDU409 Homo Black  
 BD: 13/1/2023 Homo Polled

AYRVALE HERCULES H9  
**Sire: TEXAS POWERPLAY P613**  
 TEXAS UNDINE H647  
 BONNYDALE SA LEGEND  
**Dam: BONNYDALE SA GEORGIA S597**  
 BONNYDALE SA GEORGIA P339

SimAngus		
BW	\$ Index Values	
kg	AAPI	ATI
28	39.34	63.8
<b>RANK</b>	<b>95</b>	<b>45</b>

	CE	BW	WW	YW	MCE	MILK	MWW	STAY	DOC	CW	REA	FAT	MB	YG
EPD	11.2	-1.9	64.2	108.7	6.2	23.7	55.8	12.6	5.3	34.8	0.64	0.013	0.43	-0.07
<b>RANK</b>	<b>40</b>	<b>4</b>	<b>90</b>	<b>70</b>	<b>45</b>	<b>30</b>	<b>70</b>	<b>80</b>	<b>100</b>	<b>35</b>	<b>85</b>	<b>1</b>	<b>10</b>	<b>100</b>

Purchaser: ..... Price: .....

**LOT 45 BONNYDALE SA SHOGUN U583**

AUS#: MBBDU583 Homo Black  
 BD: 1/4/2023 Homo Polled

BONNYDALE PATRIOT  
**Sire: BONNYDALE SA SHOGUN**  
 BONNYDALE SA IRIS H340  
 BONNYDALE SA MATAURI N304  
**Dam: BONNYDALE SA LYDIA R462**  
 BONNYDALE SA LYDIA G327

SimAngus		
BW	\$ Index Values	
kg	AAPI	ATI
40	86.57	95.51
<b>RANK</b>	<b>10</b>	<b>10</b>

	CE	BW	WW	YW	MCE	MILK	MWW	STAY	DOC	CW	REA	FAT	MB	YG
EPD	5.5	4	82.5	128.5	4	27.6	68.9	17.4	16	45.2	1.09	-0.048	0.22	-0.32
<b>RANK</b>	<b>95</b>	<b>80</b>	<b>30</b>	<b>25</b>	<b>80</b>	<b>10</b>	<b>15</b>	<b>30</b>	<b>10</b>	<b>10</b>	<b>15</b>	<b>15</b>	<b>25</b>	<b>80</b>

Purchaser: ..... Price: .....

**LOT 46 BONNYDALE SA HECTOR U535**

AUS#: MBBDU535 Homo Black  
 BD: 17/2/2023 Homo Polled

COONAMBLE HECTOR H249  
**Sire: BONNYDALE SA HECTOR**  
 BONNYDALE GEORGIA J128  
 TNT TANKER U263  
**Dam: BONNYDALE SA ANNABELLE K301**  
 STRATHTAY ANNABELLE D89

SimAngus		
BW	\$ Index Values	
kg	AAPI	ATI
34	69.93	59.74
<b>RANK</b>	<b>40</b>	<b>50</b>

	CE	BW	WW	YW	MCE	MILK	MWW	STAY	DOC	CW	REA	FAT	MB	YG
EPD	13.9	-0.8	67.4	98.2	8.7	20.6	54.3	14.9	12.1	27.4	0.48	-0.042	-0.03	-0.18
<b>RANK</b>	<b>20</b>	<b>10</b>	<b>85</b>	<b>90</b>	<b>15</b>	<b>60</b>	<b>80</b>	<b>60</b>	<b>55</b>	<b>60</b>	<b>95</b>	<b>15</b>	<b>75</b>	<b>95</b>

Purchaser: ..... Price: .....



**LOT 42**



# SUPERBLACK



LOT 49

## LOT 47 BONNYDALE Q T564

AUS#: BQD1T564 Homo Black  
BD: 8/10/2022 Homo Polled

TNT TANKER U263  
Sire: **BONNYDALE TANKER K159**  
BONNYDALE DREAM CATCHER E217

Superblack		
BW	\$ Index Values	
kg	AAPI	ATI
	57.15	55.27
RANK	70	60

Dam: **BONNYDALE Q NINDOOINBAH L0160**

	CE	BW	WW	YW	MCE	MILK	MWW	STAY	DOC	CW	REA	FAT	MB	YG
EPD	9.2	1.6	76.8	111.5	4.6	22	60.4	11.5	13.1	27.4	0.77	-0.067	0.06	-0.34
RANK	65	40	50	65	70	45	50	90	40	60	70	30	55	75

Purchaser: ..... Price: .....

## LOT 49 BONNYDALE SB DOONSIDE U725

AUS#: MBB1U725 Hetero Black  
BD: 6/3/2023 Homo Polled

DOONSIDE MARVEL (IVF) (PS)  
Sire: **BONNYDALE SB DOONSIDE S717**  
BONNYDALE MS DESI K150

Superblack		
BW	\$ Index Values	
kg	AAPI	ATI
50	27.81	20.71
RANK	100	95

BONNYDALE TRUE JUSTICE P105  
Dam: **BONNYDALE SB GEORGIA R710**  
BONNYDALE SB GEORGIA N507

	CE	BW	WW	YW	MCE	MILK	MWW	STAY	DOC	CW	REA	FAT	MB	YG
EPD	9.5	2.4	79.5	122.1	4	23.6	63.4	10.4	10.6	17.1	0.64	-0.1	-0.27	-0.42
RANK	60	55	40	40	80	30	35	95	80	90	85	85	100	45

Purchaser: ..... Price: .....

## LOT 48 BONNYDALE Q T589

AUS#: BQD1T589 Homo Black  
BD: 1/10/2022 Homo Polled

TNT TANKER U263  
Sire: **BONNYDALE TANKER K159**  
BONNYDALE DREAM CATCHER E217

Superblack		
BW	\$ Index Values	
kg	AAPI	ATI
	59.5	56.45
RANK	65	55

Dam: **BONNYDALE Q NINDOOINBAH L205**

	CE	BW	WW	YW	MCE	MILK	MWW	STAY	DOC	CW	REA	FAT	MB	YG
EPD	9.6	0.8	72.4	105.8	5.1	21.8	58	11.6	13	27.3	0.66	-0.008	0.35	-0.16
RANK	60	30	70	75	65	45	60	90	45	60	85	2	15	95

Purchaser: ..... Price: .....

## LOT 50 BONNYDALE SB DOONSIDE U710

AUS#: MBB1U710 Hetero Black  
BD: 28/1/2023 Homo Polled

DOONSIDE MARVEL (IVF) (PS)  
Sire: **BONNYDALE SB DOONSIDE S717**  
BONNYDALE MS DESI K150

Superblack		
BW	\$ Index Values	
kg	AAPI	ATI
46	73.64	54.16
RANK	30	60

TELPARA HILLS SWIFT 30N  
Dam: **BONNYDALE SB GLENDIVE R707**  
BONNYDALE GLENDIVE L148

	CE	BW	WW	YW	MCE	MILK	MWW	STAY	DOC	CW	REA	FAT	MB	YG
EPD	10.4	2.7	66.7	100.6	5.6	21.2	54.6	14.7	16.1	25.2	1.17	-0.102	-0.23	-0.56
RANK	50	60	85	85	55	55	80	60	10	70	10	85	100	3

Purchaser: ..... Price: .....

**LOT 51 BONNYDALE SB DOONSIDE U715**

AUS#: MBB1U715 Homo Black  
 BD: 6/2/2023 Homo Polled

DOONSIDE MARVEL (IVF) (PS)  
**Sire: BONNYDALE SB DOONSIDE S717**  
 BONNYDALE MS DESI K150  
 BONNYDALE SB NIGHT RIDER N505  
**Dam: BONNYDALE SB GUAVA Q538**  
 BONNYDALE K131

Superblack		
BW	\$ Index Values	
kg	AAPI	ATI
40	7.34	-41.13
<b>RANK</b>	<b>100</b>	<b>100</b>

	CE	BW	WW	YW	MCE	MILK	MWW	STAY	DOC	CW	REA	FAT	MB	YG
EPD	13.4	-2.7	53.2	77.1	7.5	31.4	58	10.6	6.3	-11.2	0.8	-0.099	-0.22	-0.59
<b>RANK</b>	<b>20</b>	<b>2</b>	<b>100</b>	<b>100</b>	<b>25</b>	<b>2</b>	<b>60</b>	<b>95</b>	<b>100</b>	<b>100</b>	<b>65</b>	<b>80</b>	<b>100</b>	<b>2</b>

Purchaser: ..... Price: .....

**LOT 52 BONNYDALE SB RESERVE U726**

AUS#: MBB0U726 Homo Black  
 BD: 8/3/2023 Homo Polled

ARDCAIRNIE L154  
**Sire: BONNYDALE SA RESERVE R489**  
 BONNYDALE GATEWAY P142  
 TELPARA HILLS SWIFT 30N  
**Dam: BONNYDALE SB LIL DESSI S708**  
 BONNYDALE SB LIL DESSI Q511

Superblack		
BW	\$ Index Values	
kg	AAPI	ATI
41	74.72	82.58
<b>RANK</b>	<b>25</b>	<b>20</b>

	CE	BW	WW	YW	MCE	MILK	MWW	STAY	DOC	CW	REA	FAT	MB	YG
EPD	7.3	3.6	69.4	110.5	4.9	23.9	58.6	12.3	16.2	38.4	1.03	-0.051	0.08	-0.34
<b>RANK</b>	<b>80</b>	<b>75</b>	<b>80</b>	<b>65</b>	<b>65</b>	<b>30</b>	<b>60</b>	<b>85</b>	<b>10</b>	<b>25</b>	<b>20</b>	<b>20</b>	<b>50</b>	<b>75</b>

Purchaser: ..... Price: .....

**LOT 53 BONNYDALE SB SWIFT U704**

AUS#: MBB0U704 Homo Black  
 BD: 17/1/2023 Homo Polled

GR SWIFT 209W3  
**Sire: TELPARA HILLS SWIFT 30N**  
 MS BRINKS UNITAS 30T94  
 BONNYDALE SB CSONKA Q507  
**Dam: BONNYDALE SB CSONKA S725**  
 BONNYDALE SB IPOD P505

Superblack		
BW	\$ Index Values	
kg	AAPI	ATI
36	13.97	31.03
<b>RANK</b>	<b>100</b>	<b>90</b>

	CE	BW	WW	YW	MCE	MILK	MWW	STAY	DOC	CW	REA	FAT	MB	YG
EPD	6.8	2.4	75.4	111.2	4.7	19	56.7	3.7	7.2	20.2	0.78	-0.048	0.11	-0.32
<b>RANK</b>	<b>85</b>	<b>55</b>	<b>60</b>	<b>65</b>	<b>70</b>	<b>70</b>	<b>65</b>	<b>100</b>	<b>95</b>	<b>85</b>	<b>65</b>	<b>15</b>	<b>45</b>	<b>75</b>

Purchaser: ..... Price: .....

**LOT 54 BONNYDALE SB BROAD RANGE U703**

AUS#: MBB2U703 Hetero Black  
 BD: 17/1/2023 Homo Polled

GIBBS 7382 BROAD RANGE  
**Sire: BONNYDALE BROAD RANGE S35**  
 BONNYDALE CAMILLE P73  
 DOONSIDE MARVEL (IVF) (PS)  
**Dam: BONNYDALE SB LIL DESSI S707**  
 BONNYDALE LIL DESSI M20

Superblack		
BW	\$ Index Values	
kg	AAPI	ATI
23	32.84	-9.83
<b>RANK</b>	<b>100</b>	<b>100</b>

	CE	BW	WW	YW	MCE	MILK	MWW	STAY	DOC	CW	REA	FAT	MB	YG
EPD	20.1	-5.7	59	89.2	11.2	22.5	52	12.2	10.5	0.5	0.7	-0.08	-0.08	-0.46
<b>RANK</b>	<b>1</b>	<b>1</b>	<b>100</b>	<b>95</b>	<b>1</b>	<b>40</b>	<b>85</b>	<b>85</b>	<b>80</b>	<b>100</b>	<b>80</b>	<b>50</b>	<b>85</b>	<b>30</b>

Purchaser: ..... Price: .....



**LOT 52**

# PURCHASER'S INSTRUCTION SLIP

(to be handed to agents before leaving the Sale Venue, NO VERBAL INSTRUCTIONS CAN BE ACCEPTED)

Name\_\_\_\_\_

Address\_\_\_\_\_

Phone\_\_\_\_\_

Email\_\_\_\_\_

Contact Person\_\_\_\_\_

Account to\_\_\_\_\_

Lots Purchased\_\_\_\_\_

Total No. of Lots\_\_\_\_\_

Destination\_\_\_\_\_

Insure for (period)\_\_\_\_\_

Other instructions\_\_\_\_\_

Signature of buyer\_\_\_\_\_

**INSURANCE DISCLAIMER** - Insurance risk of stud animals sold at auction transfers to the purchaser at the fall of the hammer including animals remaining on the vendor's property. Purchasers therefore are advised to insure their animals at the completion of the sale. Stud Animals are not covered by commercial livestock insurance at any point.

## **SPECIAL NOTICE TO BUYERS**

- 1) In the interest of buyers and to prevent the occurrence of mistakes, all instructions concerning delivery, trucking or shipping of cattle must be given in writing and signed by the buyer or his representative.
- 2) Instruction for despatch of consignments comprising more than one owner must be signed by each buyer, no instruction slip will be considered complete until all have signed.

## **NO VERBAL INSTRUCTIONS CAN BE ACCEPTED CONDITIONS OF SALE**

The conditions of sale are those laid down and displayed by the selling agents.



**The team at Elders Roma are pleased to offer a broad range of products and services to support your agricultural needs. Contact your trusted local team today.**

**Branch Manager**  
Keith Crouch  
P. 0428 745 924

**Rural Products Manager**  
Cindy Wilkin  
P. 0407 582 269

**Territory Sales Manager**  
Bennett Ladbroke  
P. 0427 875 358

**Rural Products Sales**  
Caitlin Barry  
P. 0437 192 158

**Territory Sales Manager**  
Campbell Duff  
P. 0467 716 107

**Rural Products Sales**  
Felicity Sellick  
P. 0472 688 457

**Elders Roma**  
2-4 Tiffin Street  
P. 07 4572 6700

E. [dg\\_roma@elders.com.au](mailto:dg_roma@elders.com.au)



# NOTES

---

---

---

---

---

---

---

---

---

---

---

---

---

---

---

---

---

---

---

---

---

---

---

---





# FOR TRUSTED STUD STOCK SERVICE

Elders Stud Stock are your leading stud sales team with proven experience and professional service to support your business. Speak to our trusted team about your stud stock needs today.

## Contact our Team:

Michael Smith	0428 541 711
Andrew Meara	0427 210 634
Jenni O'Sullivan	0428 222 080
Anthony Ball	0428 275 499
Mark Scholes	0409 694 696
Randall Spann	0429 700 332
Eliza Connors	0419 644 813
Sandra Wilson	0491 844 868

## Elders Stud Stock - QLD Offices

PO Box 395

Rockhampton

P. 07 4838 9000

PO Box 7270

Toowoomba

P. 07 4690 7777



INTEGRITY - INNOVATION - INVESTMENT

**BonnydaleQLD** | Black Simmentals 

**[bonnydalesimmentals.com](http://bonnydalesimmentals.com)**

